

Installation instructions

DROPTILE SPECKLE & DROPTILE BLACK



PREFACE

In order to provide the customer with the best use of product, this installation guide has to be followed carefully to guarantee conformity and ensure sports performance. If not, Tarkett Sports will not be responsible for damages following installation.

Any use of the product for purposes other than the ones set out, in the condition of use, should be submitted to Tarkett Sports for prior approval. If you need any further information, please contact your dealer who will provide you with the appropriate advice.



Check before installation, the quality of the delivered product. If the product is defective, contact Tarkett Sports. If installation is in process, it shall be stopped on the day the defect is noticed otherwise the Warranty shall not apply.

SUBFLOOR

All substrates made of asphalt, concrete and poured levelling screed are suitable for installation.

The subfloor must be dry, flat, clean, strong and without cracks.

The moisture rate for concrete or cement screed must be in accordance with the local requirements.

For example : France $\leq 4,5\%$ and Germany $< 2\%$ (CCM method),...

A solid base is required to ensure stability and performance.

Choice of laying techniques Subfloor	Loose - lay
Surface appearance	Smooth
Flatness	5mm under 2m ruler
Moister rates for concrete	Local standard compliant
Moister rates for anhydrite screed	$< 0,5\%$
Saw joints treatment	Yes, if levelling compound is applied
Cracks $< 1\text{mm}$ treatment	Yes, if levelling compound is applied
Levelling compound (necessary if the surface appearance is not smooth or if the flatness is not compliant)	If the concrete is exposed to capillary moisture surges, it's necessary to waterproof the subfloor by an epoxy resin (or equivalent) before applying the levelling compound

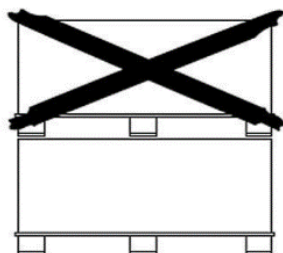
Droptile Speckle and Droptile Black are not compatible with heating flooring system.

INSTALLATION

1 – GENERAL CONDITIONS



The temperature in the room needs to be between 15°C and 25°C and for the subfloor $\geq 12^{\circ}\text{C}$.

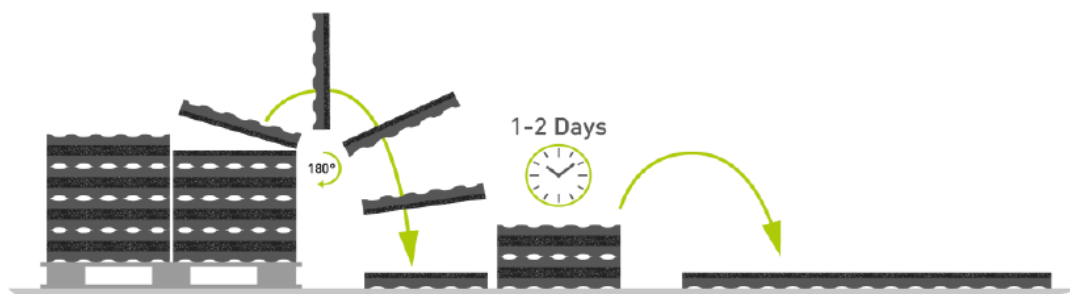


**NE PAS GERBER
DO NOT STACK**



Droptile needs to be acclimated between 24 and 48 hours in the fitness area on a flat surface, dry and without any ruggedness. Remove the tiles from the pallet and store them in stacks of no greater than 6 tiles.

Tiles should be stacked finish to finish, and dimpled edge to dimpled edge to protect the surface from scratches.

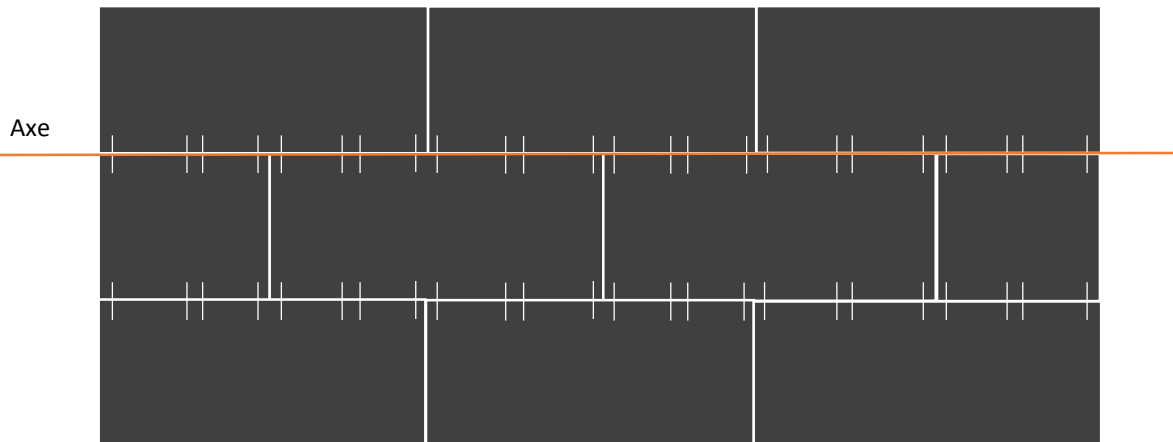


2 – INSTALLATION

Same batch for all the same room.

Mark out axis parallel to the wall to start the installation.

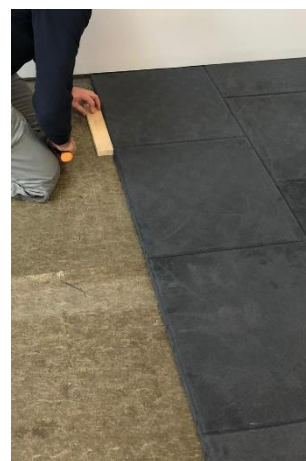
Tarkett Sports recommends to install tiles along a wall with the connector pins towards the next row.



Each row should be offset by a half tile



8 connector pins per tile



Close the gaps with a rubber mallet



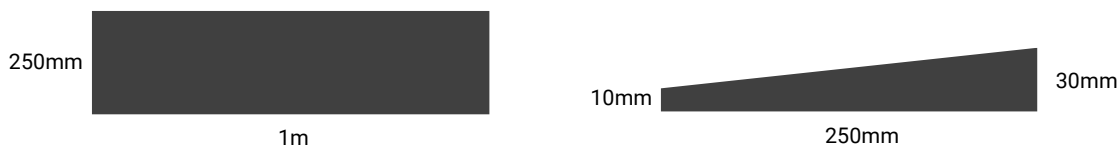
The tiles could be cut to size using an electric jigsaw or a knife with straight blade.

3 – PROFILES

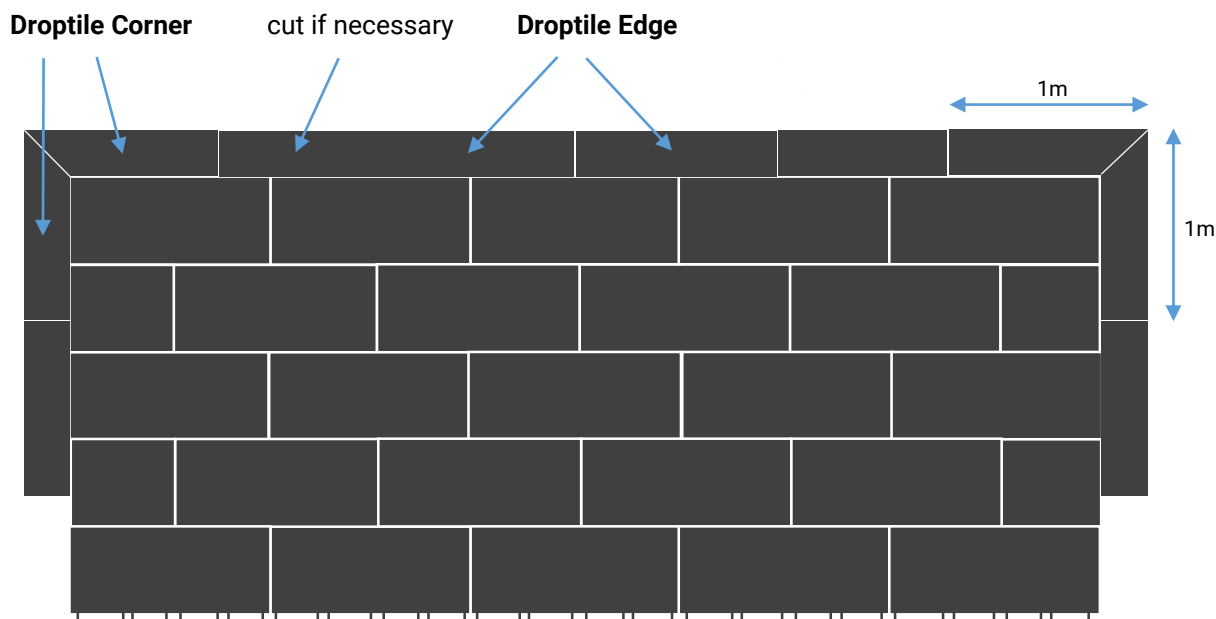
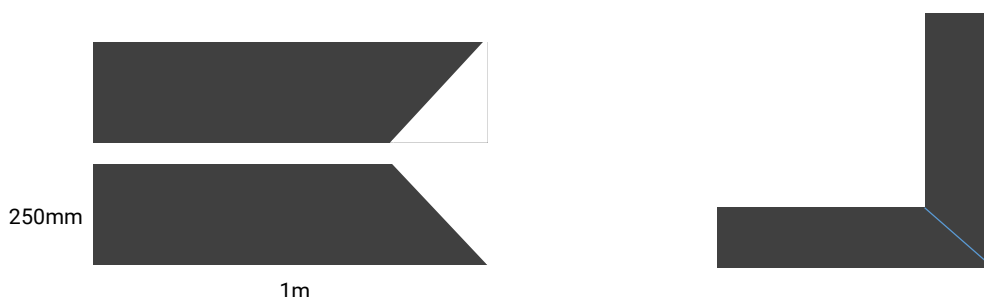
DROPTILE EDGE and DROPTILE CORNER

If Droptile tiles are installed in the middle or in the corner of the room, Tarkett Sports sells access ramps.

Droptile Edge Black ref. 430012101



Droptile Corner Black ref. 430011101

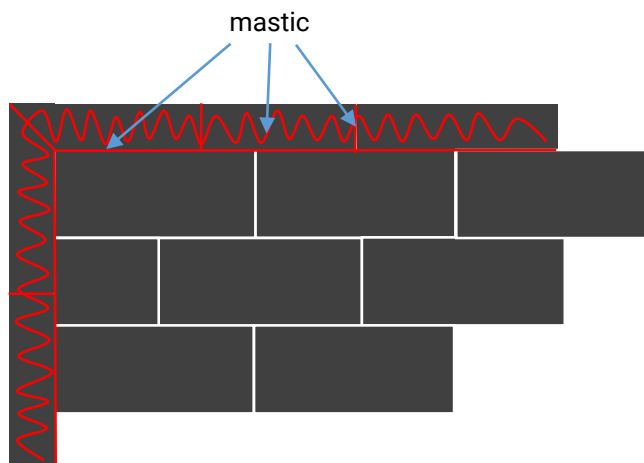


3 – PROFILES

DROPTILE EDGE and DROPTILE CORNER

Access ramps Droptile Edge et Droptile Corner must be secured :

1st solution : The access ramps are glued with a PU mastic glue on the substrate and on the slices, between them and with the last row of tiles



2nd solution : The access ramps are secured with steel edging (not sold by Tarkett Sports). Steel edging will be screwed on the substrate. Access ramps ends will be glued on top of steel edging with a PU mastic glue.

Access ramps slices are glued together and with the last row of tiles with a PU mastic glue.

