

Herringbone Rigid 55

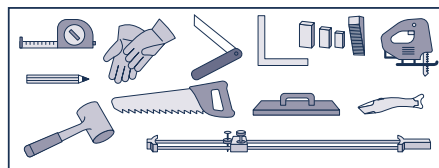
LUXURY VINYL TILES

03/2025

Installation Instructions

A TOOLS FOR THE INSTALLATION

- Knife with straight blade
- Protective gloves
- White-headed rubber mallet
- Folding rule/measuring tape
- Pencil/T-square
- 6 mm Spacers
- Saw/jigsaw
- Scriber
- Tapping block
- Sliding Bevel Ruler



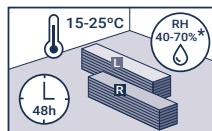
B PREPARATION AND IMPORTANT INFORMATION PRIOR TO INSTALLATION

B.1 EXAMINATION OF GOODS

Check the quality of the goods supplied before proceeding with the preparation work. Claims cannot be made on goods that have been cut to size or laid. The installation must be done using the same production batch in order to guarantee the uniformity of colour and design.

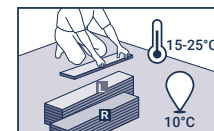
B.2 ACCLIMATISATION

Herringbone Rigid should be acclimatised for at least 48 hours in the rooms where it is to be installed according to the conditions detailed below. Boxes should remain unopened during acclimatisation.



B.3 ROOM TEMPERATURE CONDITIONS

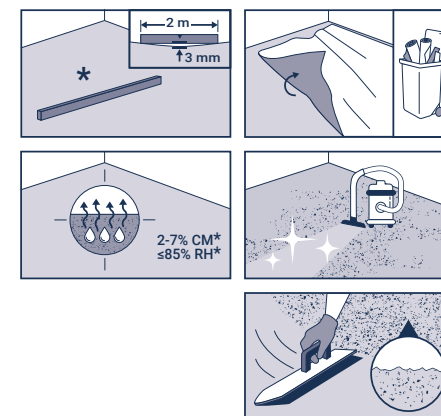
Herringbone Rigid should be installed at room temperature, between 15°C and 25°C. The temperature of the subfloor on which the product is to be installed must not be less than 10°C.



B.4 SUBFLOOR CONDITIONS

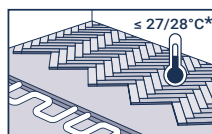
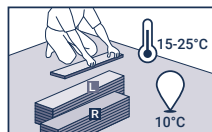
Prepare the surface according to the standards in force in your country. The surface must be level, firm and not exposed to rising humidity. See permitted subfloors mentioned below. The maximum flatness tolerance is 3 mm under a 2 m metal ruler. Textile and needle felt floor coverings must be removed. In principle, it is recommended that all floor coverings are removed. We advise not proceeding with the installation of Herringbone Rigid in the event of:

- Significant uneven areas (in excess of standards of flatness applied in the countries concerned).
- Cracks in the subfloor.
- Subfloor insufficiently dry.
- Surface insufficiently firm, too porous or too rough.



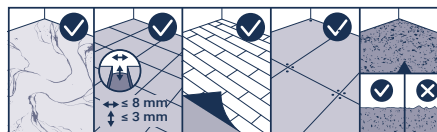
Herringbone Rigid

- Surface contaminated, e.g., by oil, wax, varnish or paint residue.
- Difference in level between the subfloor and other structural elements.
- Unsuitable subfloor temperature (below 10°C).
- Room temperatures lower than 15°C or higher than 25°C.
- No heating protocol in case of underfloor heating system.
- Underfloor heating systems whose maximum temperature exceeds 27°C.



PERMITTED SUBFLOOR

- Even stone floors, marble, or ashlar.
- Ceramic tiles (seam requirements: ≤ 8 mm wide/≤ 3 mm deep).
- Compact PVC and linoleum coverings.
- Fixed wooden floor (when respecting local regulations).
- Uneven floor screeds: new or reworked.



The warranty of the product is invalid when unapproved subfloors are used.

C INSTALLATION

C.1 INSTALLATION DIRECTION

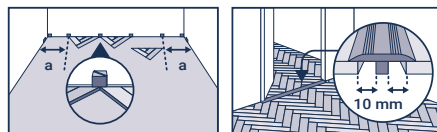
Before starting to install planks, determine the type of laying taking into account the shape of the room and the design to be laid.

Important! Before laying the first rows of planks, check that:

- cut planks closest to the walls are more than 5 cm wide;
- each plank cut to the wall is not less than 40 cm long.

C.2 EXPANSION GAPS

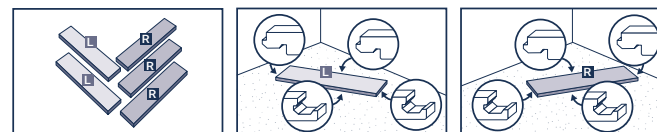
Using a suitable spacer, create a 6 mm wide expansion gap along the entire periphery. Also maintain a gap of 6 mm from all the fixtures in the room, such as pipes, door frames etc. In principle, this expansion gap should not be filled with silicone, electric cables or other items.



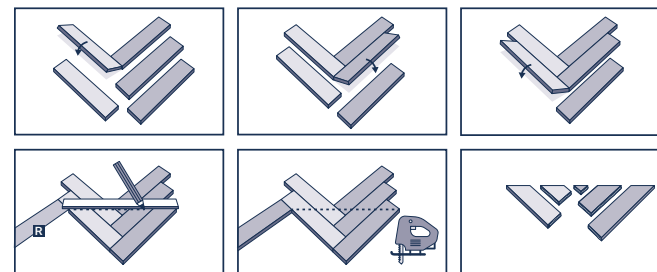
C.3 INSTALLATION

Damp rooms: edge joints in damp rooms of max. 12 m², e.g. bathrooms or kitchens, may be made with soft silicone in order to avoid any infiltration of water through the expansion gap and onto the installed surface. For all larger areas in damp rooms, we recommend starting by applying insulating tape to the area of the gap before filling it with a quantity of silicone and/or using a skirting board with a sealing lip.

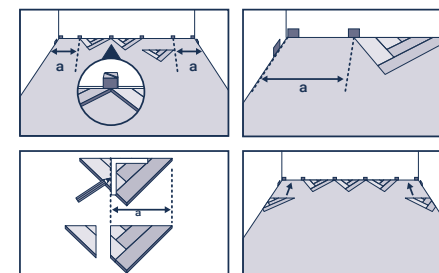
The herringbone pattern is laid thanks to two types of planks [L] and [R] alternately installed.



Install the first panels along the whole by creating triangles as shown below, inserting the tongue into the groove at an angle of 12°. Alternate [L] and [R] planks.

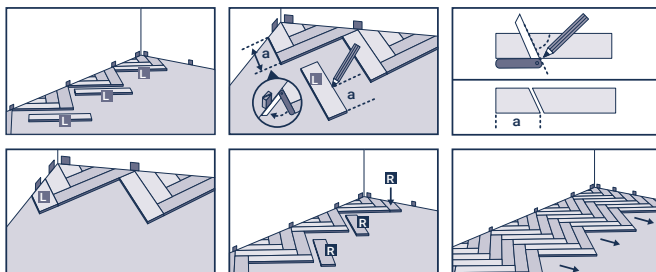


Place the created triangles along the wall with 6 mm spacers for the expansion gap. Centre them and cut off triangles on both sides.



Herringbone Rigid

When the first row is created, full planks are installed, once again alternating [L] and [R] planks, cutting them along the wall thanks to the scribing method.

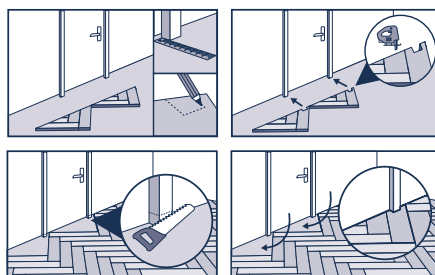


HOW TO INSTALL AROUND A DOOR FRAME

You can either cut the plank to match the door frame profile or saw cut the bottom part of the door frame to the corresponding height of the plank. Ensure at all times the 6 mm gap.

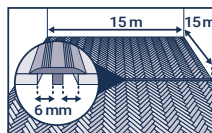
For the final row, cut each plank using the scribing method to follow the wall profile and glue the last cut planks.

Note: If the wall is not straight, the first row needs to be cut following the wall profile with a scribe to always keep the min. 6 mm expansion gap around the room.



C.4 EXPANSION PROFILES WITHIN THE AREA

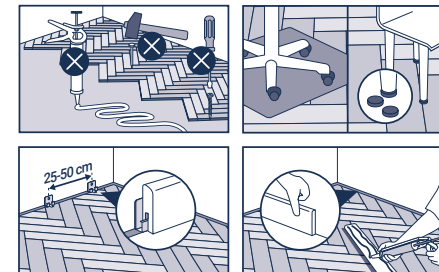
An expansion gap of 6 mm wide is required along the entire periphery and from all the fixtures in the room. Rooms with an uninterrupted area of maximum 15 m long or 15 m large may benefit from a joint-free installation. Over those dimensions, an expansion profile has to be used. When installing skirting boards, transition profiles or end profiles, the skirting boards or profiles must never be fixed to the floor covering.



Contact your Tarkett representative if you would like more information on this.

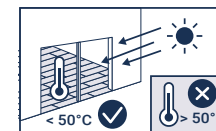
IMPORTANT INFORMATION FOR COMPLETING THE INSTALLATION

- Remove all spacers.
- Before final installation of skirting boards or profiles, the offcuts and any other debris should be removed from dilatation gaps.
- Herringbone Rigid must never be blocked or fixed to the subfloor, underlay, furniture or other fixtures.
- Place a walk-off mat at outside entrances to reduce the amount of dirt brought into your home.
- Please use sliders suitable for hard floors if mobile furniture is used. Never drag heavy items or furniture over the floor but lift them up.
- Please use office chairs and other wheeled equipment with W type castors. For better protection, a desk mat can be installed under castor chairs and rolling furniture.
- We recommend applying a protective layer of TarkoProtect before the finished floor is used.



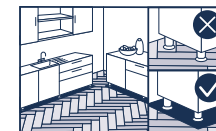
PARTICULARITIES AND EXCEPTIONAL SITUATIONS

- Before installation, the product should be acclimatised at room temperature (between 15°C and 25°C) for at least 24 hours. This is especially important in unheated rooms, conservatories or rooms adjacent to patio doors.
- At all times after installation, extreme variations in room temperature should be avoided and temperature measured above the floor should not go below 10°C or over 50°C.
- When installing Herringbone Rigid in areas that are exposed to significant temperature fluctuations the expansion joint may be doubled to 12 mm on the entire periphery and from all fixtures in the room.
- Dyed rubber-based wheels and castors (e.g. vehicle tyres, pneumatic tyres) may cause irreversible colour changes in cases of direct interaction and contact with vinyl surfaces.



SPECIFIC CASE OF HEAVY FURNITURE

Heavy equipment (kitchen court, shelves,...) should be installed first and not placed over Herringbone Rigid, respecting the 6 mm expansion gap around the equipment or the furniture legs.

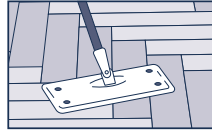


Herringbone Rigid

D CLEANING AND MAINTENANCE

Give the floor a final clean after installation.

- Clean regularly with a vacuum cleaner or dry mop. If needed, you can damp-mop your floor with water and neutral detergent. Avoid excess of water.
- Every two weeks use a cleaning solution suited to laminates, rinse the mop thoroughly, and dry-mop the floor when finished.
- Remove spots and stains immediately. Rub the stain with a clean, dry mop moistened with a dedicated cleaning agent. Never spray the cleaning agent directly onto the floor.
- Repair dents and scratches with the Tarkett repair kit.



Note: Although Tarkett may list a selection of adhesive, levelling compound and surface damp-proof membrane manufacturers and types, we do not guarantee the products listed. The list of products and manufacturers is not guaranteed complete or current. Tarkett will accept no liability for any of these products failing to perform in conjunction with any of its products. It is the responsibility of the adhesive, levelling compound and surface damp-proof membrane manufacturer and flooring contractor to ensure the products being used are appropriate for use and applied in accordance with the manufacturers' recommendations. If any clarification is needed, please contact your local Tarkett representative for further information.