

Aquarelle Wall HFS

HETEROGENEOUS VINYL
WALL COVERING

Installation Instructions

2019

1- PREPARING THE WALLS/SUBSTRATE

It must be flat, solid, sound, dry, clean, normally absorbent and also crack-free.

Any old coverings must be removed first.

Apply a primer suitable for the material and then the glue (never use paint even diluted).

Incoming and outgoing pipes should have a maximum diameter of 5 cm.

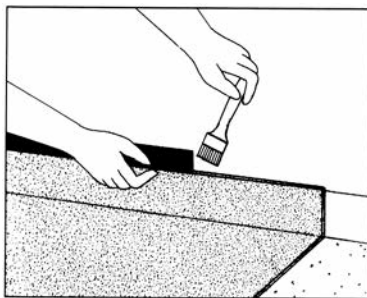
A 5 cm gap must be left between the pipework and the wall to leave room to hang Aquarelle Wall HFS.

2- PREPARING THE WALL COVERING

Precut 24 hours before gluing and keep at a minimum ambient temperature of + 15°C.

3- INSTALLING THE FLOOR/WALL TRANSITION STRIP (Ref. PJ 30 & PJ 65)

Apply a PJ 30 transition strip to compensate for the thickness of the coving, double gluing with an acrylic double contact adhesive with a spatula or use an appropriate dry tape. It is also possible to apply a wall leveling compound instead of the PJ30.



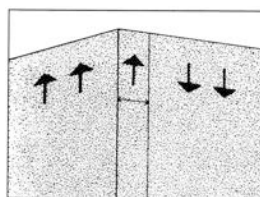
4- INSTALLING THE WALL COVERING

The wall covering should be installed so that the joints are as far away from the wet zone as possible and at least 10 cm from a corner. Joints should never be made in a corner. Measurements should include a minimum extra 3 cm to overlap the coving.

Before installing the wall covering, remove the studs with a quarter moon knife. This allows a smoother finish when creating the coving up and overlapping wall covering over the floor covering by 3 cm.

VERTICAL INSTALLATION

Position the sheets vertically to room height (reversed when necessary).



HORIZONTAL INSTALLATION

Aquarelle Wall HFS can be installed horizontally, but a Wall Border (49 cm width) must be used to ensure that the full height of the room is watertight. The Border should be applied once the Aquarelle Wall HFS wall covering is in place, and should overlap the upper edge by at least 2 cm (only use acrylic adhesive). The Wall Border frieze is positioned on the bottom edge for the best visual effect.



Wall borders



2590 0034 White
Thickness: 0.92 mm
Roll length: 30 – 35 lm



2590 0037 Extra white
Thickness: 0.92 mm
Roll length: 30 – 35 lm

5- GLUING

Take the full width of a floor covering section and mark a plumb line on the wall from ceiling to coving. Use a fine-toothed spatula TKB A4 (200/250 g/m²) to coat the defined area with an acrylic adhesive recommended by Tarkett.

Wait the appropriate tack time for the glue and then line up the first section with the plumb line and press in to place using a cork wedge (Refer to code 14, p. 23) and pushing air bubbles from top to bottom and centre to edges.

Glue the next area and hang the second section of wall covering (reversed when necessary) and either position tightly edge-to-edge with the first (make sure that the edges are in good condition) or overlapping the edges by around 3 cm. If you overlap the sheets, cut the joint using a hot air gun (Refer to code 1, p. 23) and a straight blade, or a combined scribe/marking gauge (Refer to code 1, p. 23).

INSIDE CORNER

To work round a corner, hang the wall covering up to the corner and fold it back on itself. Create a fold against the corner the full height of the sheet and then use an angle roller (Refer to code 2, p. 23) and taking care to press each side of the corner starting from the bottom. If the corner of the substrate isn't straight, cut the wall covering vertically at least 10 cm from the corner and continue with the next section.

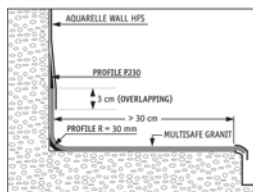
OUTSIDE CORNER

Double glue an area 5 cm from each side of the edge using an acrylic double contact adhesive with a spatula or use an appropriate dry tape. Press the wall covering in to place on one side up to the corner. Use a hot air gun (Refer to code 1, p. 23) and bend the wall covering around the corner, pressing into the angle with a cloth and outside corner roller. If the substrate corner is not straight, cut the wall covering plumb 10 cm from the corner and continue with the next sheet.

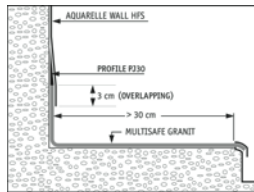
6- COVERING THE COVING

Trim off the Aquarelle Wall HFS wall covering at 7 cm or 10 cm from the floor (a 3 cm overlap with the coving) using a combined scribe/marking gauge (Refer to code 11, p. 23).

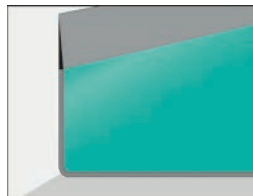
NOTE: Excess material in the corner can be incorporated by using a hot air gun (Refer to code 1, p. 23) and corner roller (Refer to code 2, p. 23).



With cove former



Heat formed without cove former

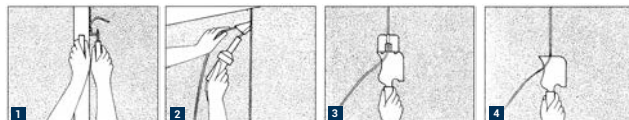


PJ 30

7- HOT WELDING THE JOINTS

Leave for 24-48 hours before hot welding the joints using welding rods as follows: Temperature of the substrate $\geq +12^{\circ}\text{C}$, ambient temperature $\geq +15^{\circ}\text{C}$

- 1 Open the joint using a grooving tool (Refer to code 3, p. 23) and a rule for support (Refer to code 4, p. 23).
- 2 Use the speed welding nozzle (Refer to code 5, p. 23) and work from top to bottom.
- 3 & 4 Use the Mozart knife (Refer to code 16, p. 23) or a quarter moon knife (Refer to code 6, p. 23) to trim in two stages, pre-trimming using an adjustable trimmer (Refer to code 7, p. 23) and finish with the quarter moon knife (Refer to code 6, p. 23).



8- CAULKING

Once the floor and wall coverings are in place, waterproof the joints around the door frame (windows, frames, ceiling etc.) using a mastic designed for this purpose (polyurethane or MS polymer, Ref. Bostik MS 107). Do the same for any fixtures installed after the Aquarelle Wall HFS wall covering.

9- CONNECTING TO A DRY ROOM

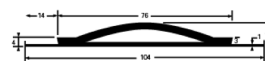
In general: hot weld the floor covering to the flooring used in the adjacent room.

WETROOM THRESHOLD TRANSITION STRIP

Tarkett offers 2 types of threshold transition strips for use with the Wetroom concept.

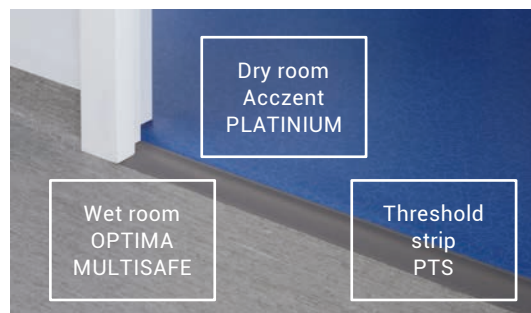
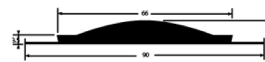
RTS: Rubber threshold strip

- made from 10 cm wide grey rubber with a central air pocket that stops water and flattens easily under foot or wheels
- available in 20 ml reels
- fixed into place with a polyurethane adhesive and the floor coverings glued on to the 1 cm strip on either side using an acrylic adhesive



PTS: PVC threshold strip

- made from 9 cm wide solid pvc
- available in 4 colours
- available in 10 strips of 3 lm in a box
- may be hot welded with a welding rod for perfect water tightness
- fixed into place adhesive with a polyurethane adhesive and the floor coverings glued on to the 1 cm strip on either side using an acrylic adhesive



TOOLS REQUIRED

Code	Type of toll	Floor	Wall	Janser	Romus
1	Hot air gun	X	X	226 110 000	95 047
2	Corner roller	X	X	224 400 123	95 135
3	Wall groover or adjustable groover		X		95 125
4	Guide rule		X	262 601 000	91 580
5	High speed hot air nozzle	X	X	224 700 300	95 030
5	High speed nozzle	X	X	224 400 300	
5	Tarkett super high speed welding nozzle (Ref. 1258 012)		X		
6	Quarter moon knife	X	X	262 621 000	95 140
7	Adjustable trimmer	X	X	262 625 000	95 150
8	Traditional blowtorch	X	X	224 962 000	95 074
8	("welder")	X	X	224 818 000	95 080
9	or special wall seam plane (studded flooring)	X	X	262 626 500	95 172
9	or trimming tool slim		X	262 609 100	
9	or "slim" or "trim" trimmer		X	262 609 300	
10	90° angle template	X			95 445
10	and flat angle template for coving	X			95 446
11	Scriber or		X	222 430 000	95 430
11	combined scriber/marketing gauge		X	262 130 000	
12	Swan neck nozzle or	X		224 810 040	95 039
12	Corner finishing nozzle	X		224 810 050	
13	Trimming gouge	X		262 610 000	95 160
14	cork wedge/squeegee	X	X	262 380 000	93 145
15	stainless steel trowel		X		93 150
16	Mozart knife	X	X	262 636 000	95 130

RECOMMENDED ADHESIVES

Tarkett regularly test the main adhesives on the market to check that they are compatible with its products. The manufacturer is responsible for the quality of the adhesives and the installer for their use according to the manufacturer's instructions.

Acrylic adhesive should be applied using a fine toothed spatula TKB A4 (d.p.t 200 . 250 g/m²) for Aquarelle Wall HFS and TKB A2 (d.p.t environ 300 g/m²) for Multisafe Granit, Granit Safe. T and Multisafe Optima. Consideration should be given to the local climate in relation to tack time, drying etc.

TECHNICAL ASSISTANCE

If your business does not yet have experience in installing the Wetroom Concept please contact your local Tarkett sales office for advice and assistance.