



NUGEN™ GLUE DOWN LUXURY VINYL PLANK INSTALLATION INSTRUCTIONS

INTRODUCTION

These instructions are written as a guide to be used when installing Tarkett NuGen™ Glue-Down Flooring. These instructions, combined with our adhesives and flooring products, create a system. Utilizing this system will ease the installation process and provide the customer with a completed product that will perform to its intended purpose. Always visit www.tarkettna.com for the most current installation and maintenance instructions. Technical videos and tip sheets are also available. Contact Tarkett Technical Services at (800)-899-8916 with any questions.

GENERAL INFORMATION

- Carefully check flooring material for any defects. Contact your supplier immediately if any defect is found.
- NuGen™ is intended for indoor use only.
- NuGen™ does not require acclimation to the jobsite conditions prior to the installation.
- Room Temperature must be maintained between 65° F and 85° F (18.3° C-29.4° C) with a relative humidity between 40% and 60% for 48 hours before and during and after the installation.
- Remove all existing transitions, quarter round, baseboard molding or cove base prior to beginning the installation.
- Undercut doorway moldings the thickness of the flooring
- Cartons must be stored horizontally on a sturdy base at all times.
- Protect corners from damage.
- Tarkett recommends using **Tarkett Q-Bond One™** adhesive when installing this flooring product. Issues associated with the use of non-recommended adhesives (including peaking, gapping, adhesion, bubbling, discoloration, indentation, etc.) are excluded from Tarkett's limited warranty. See complete Limited Warranty for details.

WOOD SUBSTRATES

Wood Floor Construction: Suspended wood floor shall be 1" (25.4 mm) or thicker, double construction, free from spring and have a minimum of 18" (475 mm) of well-ventilated air space clearance above the ground. The ground under the crawl space shall be covered with 10 mil or thicker polyethylene sheeting to reduce moisture vapor transmission.

Single wood subfloors: Single wood subfloors are not a recommended surface for installing Tarkett NuGen™ Glue Down Flooring. These floors shall be covered with a minimum of 1/4" (6.3 mm) or thicker underlayment grade plywood.

Stripwood Subfloors: Stripwood floors shall be covered with 1/2" (9.5 mm) or thicker underlayment grade plywood.

- Wood joist or truss systems spacing must be a maximum of 16" on center.
- Subfloor panels must be dry, sturdy, smooth and dimensionally stable.
- Subfloor panels must be 3/4" minimum thickness tongue and groove plywood or oriented strand board (OSB).
- Subfloor panels must be good one side, fully sanded face with a solid core (no voids).
- Subfloor panels must be exterior grade or classified as Exposure I.
- Offset subfloor panel joints by at least 16" so that four corners do not meet.
- Subfloor panels must be securely fastened to the joists and free from spring or deflection. Deflection shall not exceed 3/64" (1.1 mm) per APA PS 2-10. If glue-nail procedures are required, use a solvent-free construction adhesive.
- Subfloor must be level within 1/8" in 8 ft. (3.1 mm in 2.4 m). Any unevenness must be sanded down or filled with a cementitious patching compound. Any unevenness may show through to the surface and create separation of the flooring.

Tarkett ProSheet Plus 3 is not recommended for use with NuGen Glue Down.

Tarkett recommended underlayments include;

- APA Underlayment Grade Plywood A-C, B-C or C-C Plugged
- ACCU-PLY
- SurePly
- TECPLY
- ULAY
- C.S.A. (CanPly) and Proboard

Tarkett North America

Technical Services Department
30000 Aurora Road
Solon, OH 44139
888-639-8275 Fax 440-498-0025
northamerican.technicalsupport@tarkett.com

www.tarkettna.com



NUGEN™ GLUE DOWN
LUXURY VINYL PLANK
INSTALLATION INSTRUCTIONS

CONCRETE SUBSTRATES

- NuGen™ may be installed over properly constructed and prepared on-grade, above-grade or below-grade concrete subfloors.
- Concrete subfloors must be constructed as recommended by the American Concrete Institute's ACI 302.2 Guide for Concrete Slabs that Receive Moisture-Sensitive Flooring Materials.
- Prepare concrete subfloors according to ASTM F710 Standard Practice for Preparation of Concrete Floors to Receive Resilient Flooring. The surface of the concrete must be dry, clean smooth and structurally sound. The slab must be swept, damp mopped and/or vacuumed to remove any dust. Any surface materials present such as loose paint, wax, grease, oil, adhesive residues, crayon, pen marking, etc., that may prevent a proper adhesion or migrate to the surface of the flooring causing discoloration, must be removed. Fill and level any cracks, construction joints, control joints, depressions, grooves or other irregularities with a high-quality, non-shrinking, latex-fortified, cementitious patching compound.
- Do not install Tarkett flooring over expansion joints, or other moving joints in the substrate. These joints must be respected and should not be filled with products that are not intended for that purpose. Contact an expansion joint cover manufacturer to meet specific flooring conditions.
- Moisture testing of concrete subfloors must be performed in accordance with ASTM F1869 Standard Test Method for Measuring Moisture Vapor Emission Rate of Concrete Subfloor Using Anhydrous Calcium Chloride and ASTM F2170 Standard Test Method for Determining Relative Humidity in Concrete Floor Slabs Using in situ Probes. Do not install NuGen™ if the values are greater than 8 lbs./1000 ft²/24hrs per ASTM F1869 or 90%RH per ASTM F2170. If the tests results exceed the limitations, the installation must not proceed until the problem has been corrected. Tarkett does not recommend or warrant any particular NuGen™ or procedure for the remediation of high moisture in concrete substrates. There are several companies that manufacture NuGen™ suitable for moisture remediation. We suggest you refer to the current ASTM F710 Standard Practice for Preparing Concrete Floors to Receive Resilient Flooring and ASTM F3010 Standard Practice for Two Component Resin Based Membrane-Forming Moisture Mitigation Systems for Use Under Resilient Flooring Systems.

ADDITIONAL SUBFLOOR GUIDELINES

Many installations over existing floors produce satisfactory results. However their success is dependent upon the condition of the existing floor covering. Installing over existing flooring increases the possibility of indentations, adhesive bond failure and telegraphing of the existing floor. Note: The final decision to cover an existing floor with new flooring rests with the flooring contractor and/or installer. Tarkett will not accept responsibility for floor failures where the condition, type or improper preparation of the existing floor is the cause for the failure. When installing NuGen™ Glue Down over an existing flooring follow the recommended guidelines below.

- Resilient Vinyl floors must be smooth, even, non-cushioned, free from waxes and sealers, and well-bonded to the substrate.
- Radiant Heated flooring systems must be installed 2" below the subfloor and the operating temperature must not exceed 85° F (29.4° C). During installation, lower the radiant heated floor temperature to a minimum 65° F (18.3° C). This temperature should be maintained for at least 24 hours before, during and 48 hours after completion of the installation. Gradually increase the temperature in increments of 5° F every 24 hours but do not exceed 85° F (29.4° C).
- Residual adhesives should be mechanically removed. Do not use chemical adhesive removers or solvents. Always follow RFCI's Recommended Work Practices for Removal of Resilient Floorcoverings. **Caution: Some resilient flooring and adhesives contain "asbestos fibers" and special handling of this material is required.**
- Refer to ASTM F 2419 Standard Practice for Installation of Thick Poured Gypsum Concrete Underlayments and Preparation of the Surface to Receive Resilient Flooring for guidelines when pouring gypsum underlayments or preparing for use as an underlayment under Tarkett NuGen™. Follow the Gypsum Underlayment manufacturer's recommendations for proper application and preparation.

WARNING: Do not sand, dry sweep, dry scrape, drill, saw, bead blast or mechanically chip or pulverize existing resilient flooring, backing, lining felt or asphaltic "cutback" adhesive. These products may contain asbestos fibers or crystalline silica. Avoid creating dust. Inhalation of such dust is a cancer and respiratory tract hazard. Smoking by individuals exposed to asbestos fibers greatly increases the risk of serious bodily harm. Unless positively certain that the product is a non-asbestos containing material, you must presume it contains asbestos. Regulations may require that the material be tested to determine asbestos content.

Tarkett North America

Technical Services Department
30000 Aurora Road
Solon, OH 44139
888-639-8275 Fax 440-498-0025
northamerican.technicalsupport@tarkett.com

www.tarkettna.com



NUGEN™ GLUE DOWN LUXURY VINYL PLANK INSTALLATION INSTRUCTIONS

SUBSTRATE PREPARATION

- All substrates must be dry, clean, structurally sound, smooth and free from all existing adhesive residues.
- The substrate must be flat within 1/8" in 8' (3.17 mm in 2.4 m). An uneven subfloor can contribute to multiple problems including assembly of planks during installation.
- Fill and level concrete cracks, construction joints, control joints, depressions, grooves and other irregularities. Use a latex fortified, cementitious patching compound. Follow the manufactures recommendation for preparing.
- Sweep and vacuum or damp mop substrate to remove all dust and debris.

GETTING STARTED

- Carefully check flooring material for any defects. Contact your supplier immediately if any defect is found.
- **Important:** To insure the best color match when installing luxury plank flooring from two or more cartons, make sure the run numbers or date code on each carton are the same.
- Room temperature must be maintained between 65° F and 85° F (18.3° C-29.4° C) with a relative humidity between 40% and 60% for 48 hours before the installation, and during and after the installation.
- Remove quarter round, baseboard molding or cove base.
- Undercut doorway moldings the thickness of the flooring.
- Cartons must be stored horizontally on a sturdy base at all times.
- Protect carton corners from damage.
- **Do not use foam padding or any free floating underlayment under NuGen™ Glue Down. Tarkett ProSheet Plus 3 or SureStart is not recommended.**

PLANK LAY-OUT

Square Layout-center point

To square the area to be covered, first find the center of one end of the main rectangle. Locate the same point at the other end wall. Snap a chalk line between these points. Measure this center line to find the middle of the room and mark. A right angle must be established off this center mark. Use the following method to establish a right angle.

3-4-5 METHOD

At the center point, mark off a line across the room at exactly right angles to the first line. This may be accomplished by the 3-4-5 triangle method (Figure 1)

- 1.) Using a tape measure find the center of the room and mark points onto the substrate, one at each end of the room using a pencil.
- 2.) Strike a chalkline on these two points.
- 3.) Measure this center line to find the middle of the line and mark the substrate using a pencil.
- 4.) A right angle to this centerline needs to be created by using the 3-4-5 method.
- 5.) From the center point measure 3 feet down the center line and mark the substrate.
- 6.) From the center point measure 4 feet out from the centerline, while slightly swinging the tape measure mark the substrate simultaneously with a pencil.
- 7.) Measure from the 3 foot mark on the center line to the 4 foot mark on the substrate.
- 8.) Place a mark where the 4 foot on the floor and the 5 foot mark on the tape measure intersect.
- 9.) Using a chalkline connect the center point to the intersecting mark established in step 8 above. This new line will be a right angle to the original centerline.

Measuring from the line that is parallel to the longest wall using units of measure equal to full planks determine the size of the border planks at the wall. Generally, the width of the border planks should be at least one half the size of a full plank. Make sure to snap a new guide line at the first row of full-sized planks near the longest wall. Once installation begins it will be critical that the first row of planks are installed perfectly on the guideline. The guideline is represented by the **red** line in the figure below.

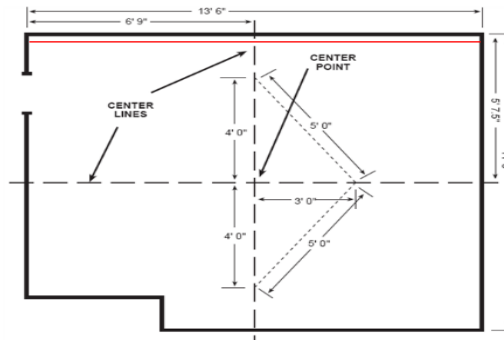
Note: For larger rooms, multiples of 6-8-10 or 9-12-15 may be used to obtain greater accuracy.

Tarkett North America

Technical Services Department
30000 Aurora Road
Solon, OH 44139
888-639-8275 Fax 440-498-0025
northamerican.technicalsupport@tarkett.com

www.tarkettna.com

NUGEN™ GLUE DOWN
 LUXURY VINYL PLANK
 INSTALLATION INSTRUCTIONS



ADHESIVE APPLICATION

Tarkett recommends using **Tarkett Q-Bond One™** adhesive when installing this flooring product. Issues associated with the use of non-recommended adhesives (including peaking, gapping, adhesion, bubbling, discoloration, indentation, etc.) are excluded from Tarkett's limited warranty. See complete Limited Warranty for the details.

Follow the **Q-Bond One™** label instructions provided on the container.

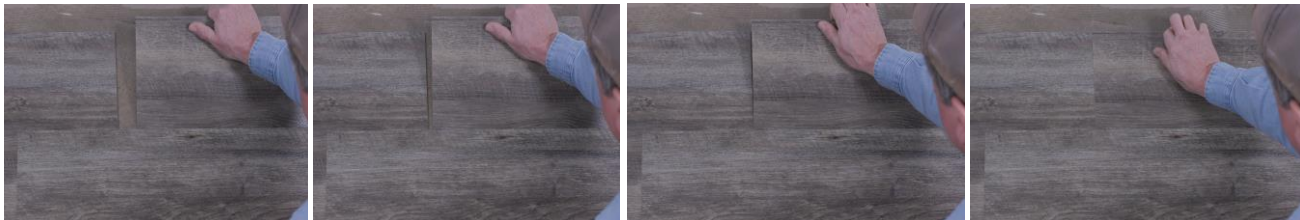
Dry Set Application

Apply adhesive over one half the area with a 1/16" deep x 1/16" wide x 1/16" apart square-notched trowel. Allow adhesive to dry to the touch. The drying time will depend upon conditions, such as temperature, relative humidity and porosity of substrate. Protect the adhesive from dirt and debris. Begin installing the planks immediately and cover within 1 hour after the adhesive dries. Immediately after installing the flooring, roll with a 75-100 lb. sectional floor roller in both directions.

INSTALLING NUGEN™ RIGID CORE PLANK FLOORING

Important: To insure the best color match when installing luxury plank flooring from two or more cartons, make sure the run numbers or date code on each carton are the same.

NuGen™ Glue Down has a unique configuration with a tongue and groove milled on the long edge of the plank to enhance the in-service performance properties. Begin laying the planks along the guideline near the longest wall, taking into consideration the length of the last plank in the row. The length of the first and last plank in each row should not be less than 12". Lay the first row of planks perfectly on the guideline, with the groove side along the guideline, as this will affect the squareness of the entire installation. The tongue side of the first row should be facing the remainder of the room while the groove side will be facing the nearest long wall. After the first row of planks is set into place, use a 2" hand seam roller to roll the leading edge of the plank. Install the second row by slightly lifting the plank and lowering it over the tongue while pressing downward towards the adhesive. **Sliding the plank to the left while lowering assists the process of connecting the groove to the tongue.** Continue this technique for all planks. Sliding to the left may not be possible for cut pieces (between the previous plank and the wall or cabinet) at the end of each row but the tongue and groove can still be connected by lowering the groove over the tongue. Make sure each plank is net-fit to the adjacent plank. Planks can be installed in a pyramid fashion or row-by-row. Roll each installed section of flooring with a 75-100 lb. sectional roller.



Tarkett North America

Technical Services Department
 30000 Aurora Road
 Solon, OH 44139
 888-639-8275 Fax 440-498-0025
 northamerican.technicalsupport@tarkett.com
www.tarkettna.com



NUGEN™ GLUE DOWN
LUXURY VINYL PLANK
INSTALLATION INSTRUCTIONS

INSTALLING BORDER PLANK

Border planks can be cut to fit using one of the following methods

Method 1

Using the tape measure, measure the distance between the wall and the last full plank installed. Measure from the factory edge of the plank and transfer the measurement to the plank using a pencil, subtract 1/8" for areas covered by wall base or shoe molding. Using a straight edge, score the surface with a sharp utility knife, then snap off the section along the score line. Place the plank firmly into the adhesive as described above.

Method 2

Border planks may also be fit by placing a loose plank over the last full plank in the row. Place another full plank over the loose plank and butt it against the wall. Use this plank as a marking plank and score or mark the bottom plank. Cut along the mark. Place the plank firmly into the adhesive as described above.

FINISHING

- Sweep up scrap material and any loose debris.
- Clean any wet adhesive from the surface of the flooring material with a clean white cloth dampened with water. Dried adhesive will require the use of denatured alcohol and a clean white rag. Follow manufactures label precautions when using denatured alcohol.
- **Roll the installed flooring again in both directions using a 75-100 lb. sectional roller.**
- Replace all wood molding or cove base.
- Install appropriate transition moldings at the doorways.
- Do not slide or roll furniture or appliances across the newly installed floor. To prevent damage, these items should be carried or slid across sheets of plywood.

PLANK REPLACEMENT

In the event of damage use the following process to replace a NuGen Glue Down plank.

- Using a straight edge and sharp utility knife cut the center of the damaged plank approximately one inch from each edge of the adjoining planks.
- Remove the rectangular shape center of the damaged plank.
- Make a cut from each corner back to the inside edge.
- Carefully remove the edges of the cut plank including the tongue. It may be necessary to use a painter's tool to remove any existing tongue from the groove of the adjacent plank. Do not damage adjoining planks.
- If the adhesive is damaged or removed during this process scrape all of the residual adhesive from the substrate and apply new adhesive to the substrate following the details outlined above in the ADHESIVE APPLICATION section. If the existing adhesive is not damaged and is tacky it may be acceptable to reuse the existing adhesive.
- Prepare the replacement plank by removing the bottom lip of the groove on the long side.
- Apply a bead of standard PVA glue to the tongue of the existing plank.
Position the replacement plank by inserting the tongue of the replacement plank into the groove of the existing plank.
- Rotate the plank downward into position.
- Clean any wet adhesive from the surface of the flooring material with a clean white cloth dampened with water. Dried adhesive will require the use of denatured alcohol and a clean white rag. Follow manufactures label precautions when using denatured alcohol.
- Roll seam edges with a hand roller to ensure proper contact with the adhesive.

Tarkett North America

Technical Services Department
30000 Aurora Road
Solon, OH 44139
888-639-8275 Fax 440-498-0025
northamerican.technicalsupport@tarkett.com

www.tarkettna.com