

## FiberFloor® Sheet Flooring Instructions for Complex Layouts

September 22, 2016

The unique construction and ease of installation has made Tarkett FiberFloor® a popular and successful flooring product with home builders and property management companies. Often FiberFloor® is installed throughout entire homes. Be aware issues can arise when attempting one piece installations in multiple rooms or in areas with difficult layouts. We would like to take this opportunity to address these issues and offer recommendations for these situations.

### FiberFloor® Installation Methods

- Glueless Application
- Full Spread with Tarkett QBond-One™ Adhesive - Releasable Application
- Full Spread with Tarkett QBond-One™ Adhesive - Permanent Application

#### A. GLUELESS APPLICATION: DIFFICULT LAYOUTS INVOLVING MULTIPLE ROOMS

1. Undercut doorway moldings the thickness of the FiberFloor® to allow flooring to slide under molding (Figure 1).
2. Scrape, sweep, and vacuum substrate (Figure 2).
3. When positioning flooring do not to twist or bow the material. This will cause buckling. Flooring must be squarely aligned within the room and lying flat.
4. To simplify the installation, doorway seams shall be utilized by overlapping factory edges and double-cutting. This will help prevent twisting, bowing and damage to the material when attempting to position one piece of flooring through multiple doorways and rooms (Figure 3).
5. Doorway seams may also be achieved, by cutting along the edge of a grout line or through the pattern with a straight edge and utility knife. The material can then be positioned back together in the doorway. Note: Reference marks must be placed on both sides of the cut to insure that the flooring is positioned back together at the same spot (Figure 4 and 5).
6. Trim flooring around all verticals such as walls, cabinets, pipes, etc. Maintain a uniform 1/4" space between flooring and all verticals. The use of a 1/4" thick piece of plywood will assist in maintaining a uniform space (Figure 6).
7. Use Tarkett S875 Floating Seam Tape to adhere seam area in keeping with the glueless installation method.
8. Check entire installation for fullness and trim if necessary.
9. Install wood moldings or cove base around the perimeter to cover the 1/4" space (Figure 9). Do not pinch flooring with molding. Do not nail wood moldings through the flooring. Nail into the wall.
10. When installing doorway transition moldings, do not nail through the flooring.
11. Seal seams with recommended Tarkett Seam Sealer.

#### B. FULL SPREAD WITH TARKETT QBOND-ONE™ ADHESIVE - RELEASABLE APPLICATION: DIFFICULT LAYOUTS INVOLVING MULTIPLE ROOMS

1. Follow steps 1-6 as described in Section "A"
2. For releasable applications, Tarkett QBond-One™ is used as a pressure sensitive adhesive. Adhesive is applied with a medium nap paint roller (Figure 7). **Do not pre-glue rooms prior to positioning and fitting of flooring.** This technique will cause air bubbles, buckling and positioning difficulties. Roll flooring with a 75lb sectional floor roller.
3. Flooring may be net fit when using the releasable method. To avoid fullness, do not cut flooring tight. Fullness will occur when material is compression fit.
4. Check entire installation for any fullness and trim if necessary.
5. Install wood moldings or cove base around the perimeter (Figure 9).
6. Install doorway transition moldings.
7. Seal seams with recommended Tarkett Seam Sealer.

**C. FULL SPREAD WITH TARKETT QBOND-ONE™ ADHESIVE - PERMANENT APPLICATION:  
DIFFICULT LAYOUTS INVOLVING MULTIPLE ROOMS**

1. Follow steps 1-6 as described in Section "A"
2. For permanent applications, Tarkett QBond-One™ is used as a wet-set adhesive. Adhesive is applied with a 1/32" deep x 1/16" wide x 1/32" apart notched trowel (Figure 8). Do not pre-glue rooms prior to positioning and fitting of flooring. This technique will cause air bubbles, buckling and positioning difficulties. Roll flooring with a 75-100 lb sectional floor roller.
3. Flooring may be net fit when using the permanent method. To avoid fullness, do not cut flooring tight. Fullness will occur when material is compression fit.
4. Check entire installation for any fullness and trim if necessary.
5. Install wood moldings or cove base around the perimeter (Figure 9).
6. Install doorway transition moldings.
7. Seal seams with recommended Tarkett Seam Sealer.



Figure 1



Figure 2

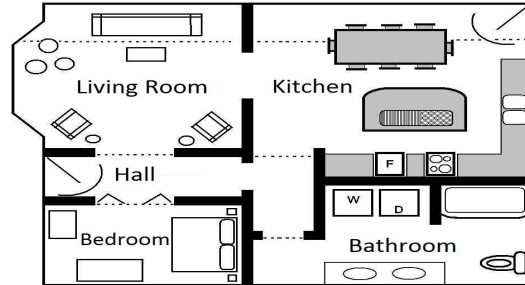


Figure 3



Figure 4



Figure 5

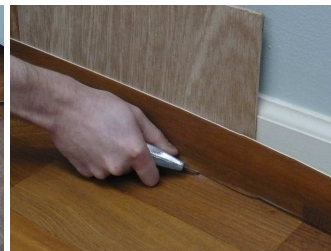


Figure 6

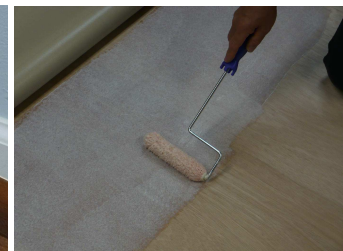


Figure 7

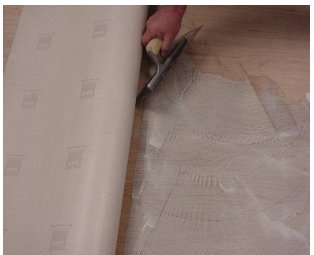


Figure 8



Figure 9

For details, refer to Tarkett FiberFloor® Installation Manual or call Technical Service Department at (888) 639-8275.