

Installation instructions

2024

DESSO SoundMaster® DESSO SoundMaster Lite® and DESSO SoundMaster Thrive® DESSO SoundMaster XLite® CARPET TILES

INSPECTION OF MATERIAL

- Make sure that the quantity, quality, colour, etc, correspond exactly with your order. All carpet tiles should be carefully inspected for damage or defects prior to installation. Tarkett will not be responsible for any cost associated with replacement or repair as a result of damaged or defective tiles being installed when said damage or defects were identifiable prior to installation.
- If you encounter any conditions or defects during installation that could jeopardize the installation or affect the installation procedure, you should STOP the installation immediately and call your local Tarkett representative.
- If agreed to receive different colour batches/shades, please ensure that these are installed separately, not combined in one room.
- Floorboards and similar substrates should have a moisture content of max 10% with wood moisture meter.
- Handheld pin and pinless meters should only be used for quantitative measurements to identify areas of high or low moisture content and not to determine whether or not floor coverings should be installed.
- The moisture content should be in accordance with the current relevant Standard within the country of use. The moisture content must be in line with the recommendation of the tackifier manufacturer.
- Panels of Raised Access Floor need to be smooth, level and secure. Gaps between the panels may not exceed 1,5 mm.

PREPARATION

Acclimatisation of tiles should take place in the building and areas where they will be installed, with below mentioned conditions and restrictions.

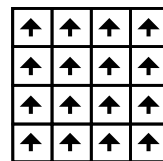
- Acclimatise all carpet tiles at least 48 hours before installation.
- Required conditions for acclimatisation and during life time cycle needs to be within 15°C and 30°C temperature, with relative humidity between 40%-60% prior to, during and after installation.
- If it is not possible to unpack the tiles, open the carton sides to allow air circulation and stack them to a maximum of 10 boxes high.
- Carpet tiles can be installed on floors with underfloor heating, providing the floor surface temperature does not exceed 27°C. The heating should be reduced at least 48 hours prior to installation. 48 hours after installation the heating system slowly may be turned up to the maximum of 27°C.

CONDITIONS AND REQUIREMENTS

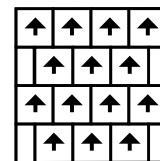
- Carpet tiles should be installed directly onto the floor and use of an underlay is not permitted. Existing floor coverings, such as PVC, Linoleum or underlay must be completely removed from the subfloor prior to installation.
- The carpet tiles can be installed on any floor that is level, smooth, dry, pressure-resistant, clean and protected from damp. Remnants must be removed as should any adhesive, dust grease or polish. Any holes or indentations, joints, cracks or uneven floor areas should be levelled with a good floor filler or levelling compound. Follow the instructions of the manufacturer.
- When installing this product on concrete subfloors the moisture content measured in terms of relative humidity In-Situ Probes not higher than 85%, or ≤ 3% with CM (Carbide Method).
- Anhydrite floors must be dry. Tested with a CM-meter the value should be no more than 1%.

INSTALLATION DIRECTION

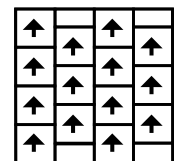
- Tiles can be installed Monolithic, Quarter-turn, Brick or Ashlar.



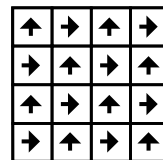
Monolithic



Brick



Ashlar



Quarter-turn

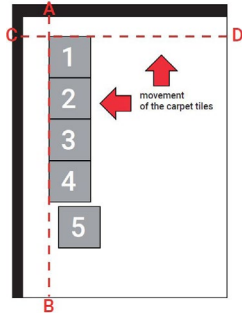
- You will find the suitable installation method of each quality at the technical specification and on the boxes.
- Due to the influence of the installation direction to the appearance of the floor, the installation direction must be discussed with the customer beforehand.



If any doubts or clarifications should be needed, please contact your local Tarkett representative for further information.

SET OUT

- Some sort of "movement" can occur by pressing and relieving surface of the carpet tile because of the fibres in the backing. This must be taken into account to set out starting point and laying direction.
- Never start installing carpet tiles direct against a wall. Always start from a calculated point near a wall to use the largest perimeter cut tile size (> 10 cm) on all perimeter walls and/or door thresholds/recesses. Snap chalk line A-B parallel to major wall bisecting calculated point. Snap chalk line C-D from calculated point perpendicular to the first line.



DETERMINE DIRECTION OF MOVEMENT

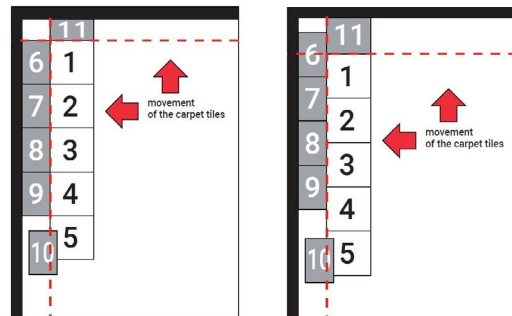
- To determine the direction of movement in the tile a simple test can be done. You need to put one tile on the floor firmly against a wall (without any adhesive) with the arrow pointed to the wall and start a stationary walking motion. This possibly makes a small space between the wall and the carpet tile, indicating the direction of movement (which goes opposite the direction of the production arrow on the back of the tile). Check by turning the arrow away from the wall and again perform a stationary walk. The tile must remain firmly against the wall. This is the position in which the tiles should be placed. ALWAYS MAKE SURE THE DIRECTION OF MOVEMENT IS TOWARDS THE WALL NEAR THE STARTING POINT.

APPLICATION

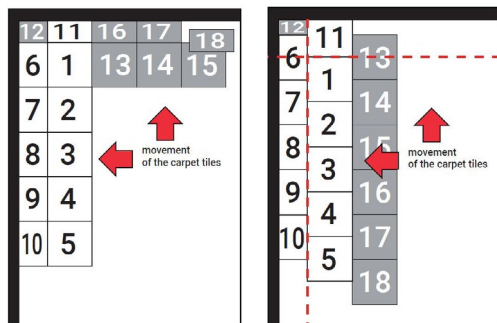
- Install carpet tiles with a tackifier (non-permanent bonding) that is suitable for the specific type of backing. Check the specifications of the tackifier manufacturer.
- Apply to the whole of the surface area. To avoid a permanent bonding, the tackifier must be allowed to completely dry before start installation of tiles. The subfloor affects the degree of adhesion of the tackifier. Make sure it is not too strong or weak. Diluting with water influences the tack. Always follow the application advise of the tackifier manufacturer. *Note: For raised flooring systems care should be taken to ensure that the tackifier stops before the edge of the raised panels. This enables panels to be lifted freely as and when the need arises.*
- DESSO Carpet tiles with SoundMaster, SoundMaster XLite and SoundMaster Lite and Thrive are antistatic (ISO 6356 \leq 2kV) but, because of this backing, a vertical resistance of $\leq 1 \times 10^9$ Ohm (ISO 10965) or a dissipative floor is NOT achievable.

INSTALLATION

- Once the tackifier has become completely dry, the carpet tiles can be installed in accordance with the illustrations. The first row of tiles must be installed close to a perimeter wall/corner (tiles 1–5).
- Check if the arrow at the back side of each carpet tile is pointing in the correct direction according to the installation method, to avoid deviating in colour and/or appearance.
- After installing the first row, the second row of tiles must be locked in by installing cut tiles between the first row and the perimeter wall (tiles 6-11). Measure and make an initial light cut on the back along a straight edge using a straight knife and without attempting to cut through. Then crack the carpet tile along the initial cut and sever the two parts by cutting straight through the fibers with a hooked knife. Place the cut edge against the skirting board. Be sure the arrows are pointing in the correct direction after being deposited at the right place.



- From there onwards, you can proceed with the installation of the tiles away from the perimeter wall into the room. After installing the first row of tiles along the perpendicular line C-D, the tiles must be locked in again by installing cut tiles along the upper perimeter wall.

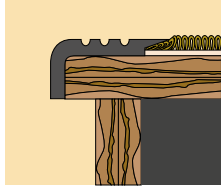


- The tiles should be firmly fitted together. Be sure that the backings are butted closely together to limit the appearance of joints to a minimum. The use of a kneekicker is advised to ensure tight installation. We can also recommend the DESSO Handkicker, see attachment for availability.



STAIRS

- Carpet tiles are suitable for installation on stairs except on the stair nose itself, so needs to be fitted with a metal or rubber stair nosing. The tiles and sections of tiles can be secured with a tackifier system on the treads. The risers must be secured with either a single coat as permanent adhesive or with tackifier coated at the back of the carpet tile and a second applied to the riser, when allowed to dry, will act like a contact adhesive.



nosing

SKIRTINGS

- When carpet tiles are used in the vertical plane as a skirting, the application may need to be approved by a local fire officer.

AFTER INSTALLATION

- It is not unusual that the installation shows some visibility of joints. Newly installed carpet tiles need a period of acclimatisation, about 6-8 weeks, under correct conditions (temperature within 15°C and 30°C with relative humidity between 40%-60%), depending on usage and maintenance regime.
- It is not unusual that pile pressure during storage can cause a slight flattening of some tiles so that a temporary variable colour tone is visible. This will normally recover quickly with acclimatisation.
- Acclimatisation process can be accelerated: slightly moisturize the tiles by spraying them with water. And after drying time brush vacuum with a carpet vacuum cleaner.
- After installation, always protect the new carpet (tiles) with a protective film (carpet cover)* or thick paper for temporary carpet protection during the construction period.

* A carpet cover is a super-strong, protective film for the temporary protection of carpet.

GENERAL

- This installation manual concerning the handling and fitting of DESSO carpet tiles is based on extensive tests and years of practical experience. Although Tarkett guarantees the accuracy of their advice, no responsibility whatsoever can be taken for work, instructions and/or descriptions supplied by any other party.
- Contact your Tarkett representative if unsure about any part of the installation.
- This information is subject to change for ongoing continuous improvement.
- Always check the Tarkett website for latest version of this installation manual.

Installation Instructions

2024

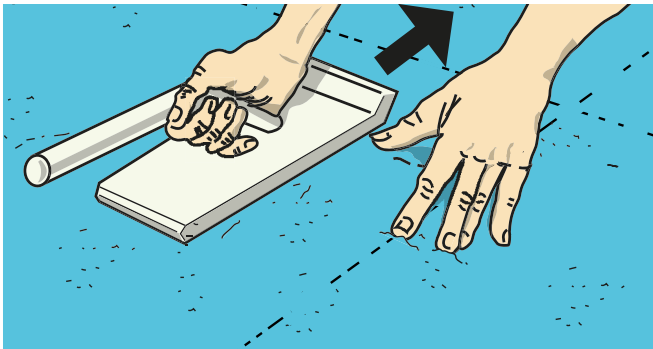
DESSO®

HAND-KICKER

Carpet tiles should be firmly fitted together. The use of the DESSO Hand-kicker has a positive effect on the installation, making sure that backings are butted closely together which limits the appearance of joints to a minimum.

HAND-KICKER

- You can use this tool for EcoBase and ProBase backings but especially for our acoustic backings.
- You can order the hand-kicker at your local customer service under item: 7199010004.
- Not available in the regular retail/stores.



 **Tarkett**

If any doubts or clarifications should be needed, please contact your local Tarkett representative for further information.
For more information, please visit: [tarkett.com](https://www.tarkett.com)