

Green Building Card Explainer

Tarkett Green Building Cards are developed per product. They bring together information about the recyclability, VOC and formaldehyde emissions and the total carbon footprint of our main products, together with their potential contribution to green building certification.

This data is relevant to the following certifications schemes: BREEAM, LEED, DGNB, WELL, SKA Rating, HQE, Greenstar, MILJO, NF HABITAT HQE and HQM.

Two editions are available: one is for commercial segments, the other for residential segments.

Green Building Card

Cover page

This is an example of a commercial Tarkett Green Building Card.



Green Building Card

Contribution to green building certification

The next pages from a Green Building Card focus on the product's potential contribution to green building certifications. The Explainer only displays two certifications as an example but the other labels are available in the full Tarkett Green Building Cards.

Version of certification scheme

Specific certification scheme requirements

Tarkett responses to requirements

CONTRIBUTION TO GREEN BUILDING CERTIFICATIONS

BREEAM®

BREEAM ISSUES	CERTIFICATION REQUIREMENTS	THE TARKETT RESPONSE
MAN 02 - Life Cycle Cost and Service Life Planning	Encourage the use of life cycle costing <i>No specific requirement at product level</i>	 LIFE CYCLE COST
HEA 01 - Visual Comfort	Best practices in daylighting and artificial lighting design <i>No specific requirement at product level</i>	 VISUAL COMFORT
HEA 02 - Indoor Air Quality	TVOC at 28 days ≤ 1000 µg/m³ Formaldehyde at 28 days ≤ 60 µg/m³	 floor score M1 A+ LOW FORMALDEHYDE EMISSIONS
MAT 01 - Life Cycle Impacts	EPDs available	 EPD
MAT 03 - Responsible Sourcing of Construction Products	ISO 14001 certified	 ISO 14001
MAT 06 - Material Efficiency	Ingredients verified by a third party or Product composed of recycled content	 MHS 25.5% RECYCLED CONTENT
WST 01 - Waste Management	Avoid sending waste to landfill <i>No specific requirement at product level</i>	 RECYCLABLE RECYCLE

LEED v4.1 Building Design and Construction

LEED CREDITS	CERTIFICATION REQUIREMENTS	THE TARKETT RESPONSE
MR - Environmental Product Declarations	EPDs available	 EPD
MR - Sourcing of Raw Materials	Signatory of the UN Global Compact or Product composed of recycled content or Recyclable at end-of-life or Bio-sourced materials	 WE SUPPORT 25.5% RECYCLED CONTENT CIRCULAR SELECTION
MR - Material Ingredients	Ingredients verified by a third party or Cradle to Cradle® certification at bronze level or higher	 MHS RECYCLABLE RECYCLE
MR - Construction and Demolition Waste Management	Avoid sending waste to landfill <i>No specific requirement at product level</i>	 RECYCLABLE RECYCLE
EQ - Low-Emitting Materials and Indoor Air Quality Assessment	TVOC at 28 days ≤ 1000 µg/m³ Formaldehyde at 28 days ≤ 10 µg/m³ Decrease the concentration of particles in the air	 floor score M1 A+ LOW FORMALDEHYDE EMISSIONS
EQ - Interior Lighting and Daylight	Best practices in daylighting and artificial lighting design <i>No specific requirement at product level</i>	 VISUAL COMFORT

Certification scheme assessment criteria

Certification scheme name

All Tarkett Green Building Cards can be available online or requested. Please contact your local sales representative.

Green Building Card

Cover page

This is an example of a residential Tarkett Green Building Card.

Product name

Green Building Card

Starfloor Click Solid 55



SUSTAINABILITY ATTRIBUTES

Circular Economy and Climate Change



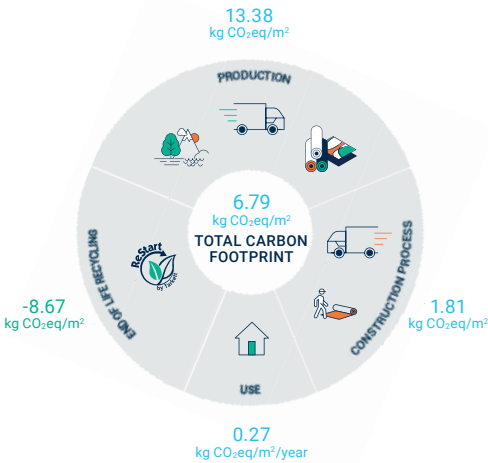
Good Materials



Indoor Air Quality



LIFE CYCLE ASSESSMENT



LCA Information above is based on the product's Environmental Product Declaration (EPD).
EPD Number: S-P-03330
EPD comparison should be conducted by experts only.



Product's main sustainability attributes

Product's total carbon footprint including D recycling module. All data is based on our third-party assessed EPDs

Green Building Card

Contribution to green building certifications

The next pages from a Green Building Card focus on the product's potential contribution to green building certifications. The Explainer only displays two certifications as an example but the other labels are available in the full Tarkett Green Building Cards.

Version of certification scheme

Specific certification scheme requirements

Tarkett responses to requirements

CONTRIBUTION TO GREEN BUILDING CERTIFICATIONS

NF HABITAT HQE V4.1

EXIGENCES NF HABITAT HQE	METHODE D'EVALUATION	RESPONSE TARKETT
Qualité de l'air intérieur	Etiquetage sanitaire français	 ≤ 10 µg/m³ OPTIMAL INDOOR AIR QUALITY ≤ 10 µg/m³ LOW FORMALDEHYDE EMISSIONS
Qualité acoustique	Bonnes pratiques sur l'acoustique au sein d'une pièce et entre pièces <i>Pas d'exigence spécifique au niveau des produits</i>	 WALKING SOUND ≤ 85 dB IMPACT NOISE REDUCTION ≤ 5 dB
Confort Visuel	Bonnes pratiques sur l'éclairage naturel et artificiel <i>Pas d'exigence spécifique au niveau des produits</i>	 VISUAL COMFORT
Ressources matières	Contenu recyclé au-delà de 15% et Produit couvert par une FDES	 35% RECYCLED CONTENT FDES
Déchets	Eviter l'envoi à la décharge <i>Pas d'exigence spécifique au niveau des produits</i>	 RECYCLABLE Recart
Déconstruction	Produits pouvant être facilement déposés en fin de vie <i>Pas d'exigence spécifique au niveau des produits</i>	 GLUE FREE INSTALLATION MODULAR PRODUCTS

HOME QUALITY MARK

HOME QUALITY MARK ISSUES	CERTIFICATION REQUIREMENTS	THE TARKETT RESPONSE
4.1 Indoor Pollutants	TVOC at 28 days ≤ 1000 µg/m³ and Formaldehyde at 28 days ≤ 60 µg/m³	 ≤ 10 µg/m³ OPTIMAL INDOOR AIR QUALITY ≤ 10 µg/m³ LOW FORMALDEHYDE EMISSIONS
4.2 Daylight	Best practices in daylighting and artificial lighting design <i>No specific requirement at product level</i>	 VISUAL COMFORT
4.4 Sound Isolation	Best practices in impact noise reduction <i>No specific requirement at product level</i>	 IMPACT NOISE REDUCTION ≤ 85 dB
6.1 Responsible Sourcing	Ingredients verified by a third party or Product composed of recycled content and ISO 14001 certified	 MHS 35% RECYCLED CONTENT Tarkett ISO 14001
6.2 Environmental Impact of Materials	EPD available	 EPD
10.4 Site Waste Management	Avoid sending waste to landfill <i>No specific requirement at product level</i>	 RECYCLABLE Recart

Certification scheme assessment criteria

Certification scheme name

All Tarkett Green Building Cards can be available online or requested. Please contact your local sales representative.

Tarkett Green Building Cards