

Lino Materiale

LINOLEUM FLOORING





Closer To Nature

Since 1898, Tarkett's linoleum has been made according to the original recipe. The Lino Materiale collection celebrates this material heritage, shining a light on one component in particular – cork.

This new collection, with its natural cork flecks, represents a steep change, bringing the calming and restorative qualities of nature into the built environment.



Lino Materiale Candy 035
Lino Materiale Blush 034
Lino Materiale Kraft 032



Closer To

Pine Branches



Natural Material

Pine Rosin

Closer To Natural Material

Cork has been a key ingredient in our linoleum from the beginning. It is both sustainably harvested from Cork Oak trees and sourced as a waste material from the Sardinian and Portuguese wine industries.

Bringing the beauty and functionality of this unassuming ingredient to the surface, Lino Materiale combines large cork granules with other natural ingredients such as linseed oil, pine rosin, and wood powder for a uniquely textured finish that brings you Closer to Nature.

Closer To Nature by Design

The restorative effects of organic materials in the built environment are widely recognised. Designed to reflect the intriguing irregularities of nature, each roll of Lino Materiale is slightly different from the next, enriching indoor educational and commercial spaces with the calming textures and tactility of the outdoors.



1. Jute Backing
 2. Linseed Oil
 3. Pine Rosin
 4. Chalk Powder
 5. Cork Granules
 6. Linoleum Roll
- Lino Materiale Blush 034



Pine Branch
Pine Cone
Pine Resin
Lino Materiale Crocodile 091



Dried Linseed Plant
Linseeds
Linseed Oil
Lino Materiale Honey 012



Learning from Nature's Cycles

Inspired by nature's endless cycles, all of our linoleum flooring is designed with its next life in mind, and Lino Materiale is no different.

Fully recyclable, post-consumer linoleum is collected through ReStart[®], our pioneering takeback and recycling programme, and returned to our factory. It is then broken down and used in the next generation of flooring or other high value applications, keeping valuable resources in a continuous cycle.





From left to right:
Cork Granules
Chalk
Pine Rosin
Linseed Oil
Linoleum Granules
Jute Backing
Lino Materiale Candy 035, Cotton 022 and Blush 034
Lino Materiale Metal 001

Discover Lino Materiale

Lino Materiale is available in 10 Earth-inspired tones, from warm honey and blush to metal and black. All colours match our existing Etrusco flooring and complement our LinoWall range, so that they can be seamlessly used alongside one another.

With its cork-rich formula, Lino Materiale offers more flexibility and higher sound reduction than standard linoleum. It is also resistant to dirt and daily wear and tear, with superior resistance to abrasion and chemicals throughout its long life.



Lino Materiale Denim 070
Lino Materiale Metal 001
Lino Materiale Crocodile 091



Lino Materiale Candy 035



CROCODILE 091



COTTON 022



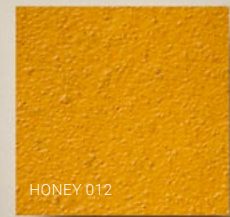
DENIM 070



KRAFT 032



SILVER 003



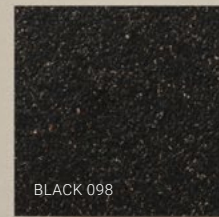
HONEY 012



METAL 001



CANDY 035



BLACK 098



BLUSH 034



Lino Materiale Cotton 022
Lino Materiale Metal 001
Lino Materiale Black 098



Lino Materiale Silver 003
Lino Materiale Cotton 022



Lino Materiale Candy 035



Lino Materiale Crocodile 091
Lino Materiale Candy 035
Lino Materiale Kraft 032



Lino Materiale Blush 034
Lino Materiale Honey 012
Lino Materiale Denim 070



Lino Materiale Honey 012
Lino Materiale Denim 070



Lino Materiale Silver 003
Lino Materiale Cotton 022





Lino Materiale Honey 012
Lino Materiale Denim 070
Lino Materiale Blush 034
Lino Materiale Crocodile 091
LinoWall Candy 135



Lino Materiale Denim 070
Lino Materiale Metal 001



Lino Materiale Crocodile 091
Lino Materiale Candy 035
LinoWall Cotton 122

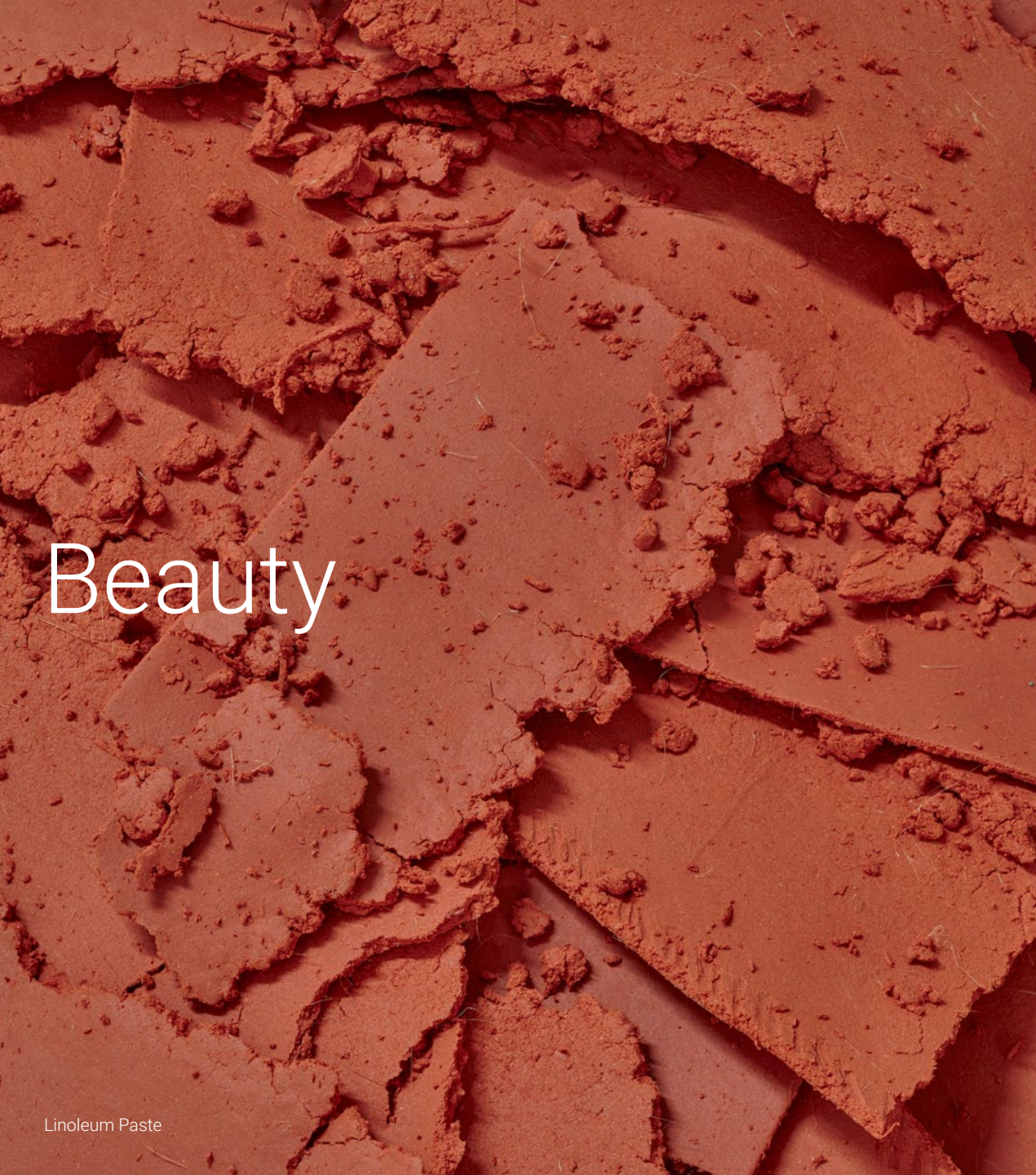
Making Lino Materiale

Proudly made in our factory in Narni, Italy, Lino Materiale is the world's first carbon-negative linoleum, covering all stages of the life cycle⁽¹⁾. It is produced sustainably using 100% recirculated industrial water and 100% renewable electricity. 40% of the factory's energy is self-generated using technologies such as photovoltaic panels, also resulting in a negative carbon footprint from Cradle to Gate (A1-A3).

(1) For Tarkett Linoleum ranges (2–4,4 mm), based on the Environmental Product Declaration (EPD N° 4791835705.101.1) externally verified by EPD programme operator UL. Based on the carbon footprint (Modules A-D), where Module D is calculated using the future recycling benefit with an open-loop recycling scenario, facilitated through Tarkett's ReStart® recycling and take-back program.
For more information: linomateriale.tarkett.com

100%





Beauty

Linoleum Paste



of Circularity

Semi-Finished Linoleum Rolls

Our Sustainability Credentials

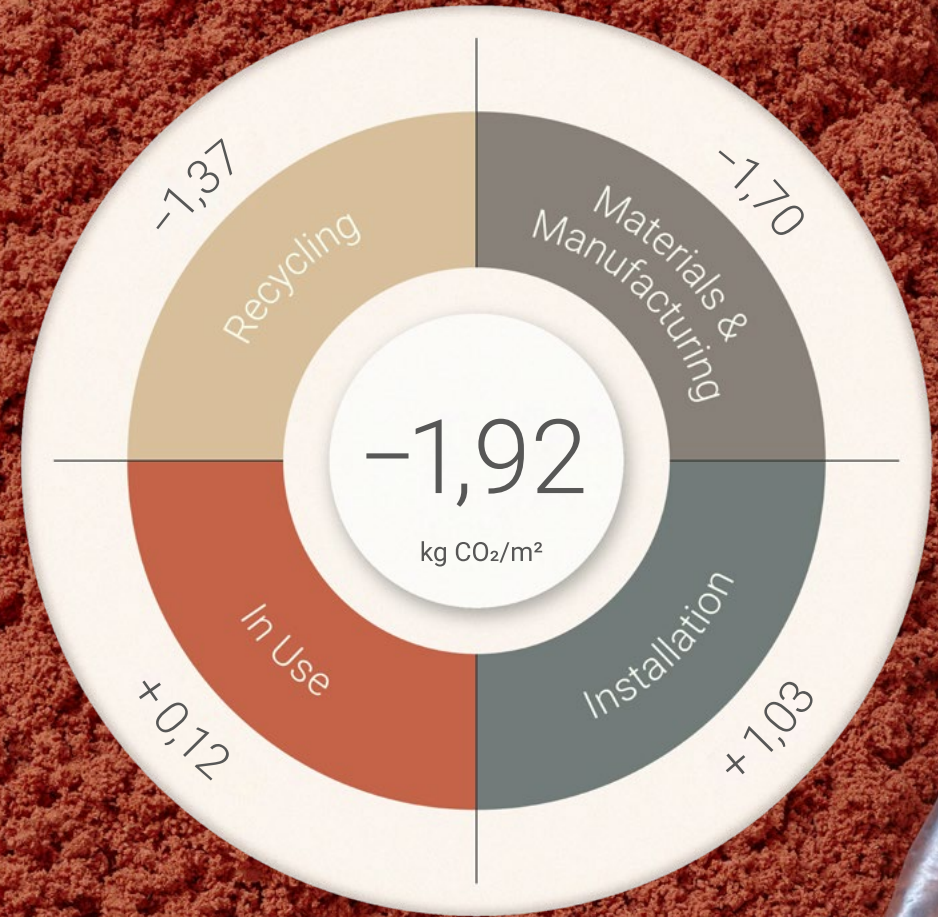
96% Natural Ingredients
83% Bio-based Content
39% Recycled Content
Cradle to Cradle®
Silver Level Certified
100% Recyclable

At Tarkett, our approach to circularity focuses on three key areas: design, materials and circular journey. For us, the beauty of circularity is about the beauty of the reused materials that go into our products, the innovative manufacturing processes we implement, and the knowledge that we're actively cutting down on waste and greenhouse gas emissions.

To keep track of the carbon generated and saved over a product's life cycle, we calculate the Circular Carbon Footprint of our linoleum floors. Using independently verified data from the relevant Environmental Product Declaration⁽³⁾ (EPD), we aim to foster dialogue about the importance of circularity and the future carbon benefits that effective recycling can deliver.

Tarkett delivers the world's first carbon-negative linoleum, covering all stages of the life cycle.⁽⁴⁾

Our Circular Carbon Footprint⁽²⁾



(2) Figures reported in this diagram refer to Tarkett 2,5 mm linoleum

(3) linomateriale.tarkett.com

(4) For Tarkett Linoleum ranges (2–4,4 mm), based on the Environmental Product Declaration (EPD N° 4791835705.101.1) externally verified by EPD programme operator UL. Based on the carbon footprint (Modules A-D), where Module D is calculated using the future recycling benefit with an open-loop recycling scenario, facilitated through Tarkett's ReStart® recycling and take-back program.

For more information: linomateriale.tarkett.com

Colour Range



COTTON
14612 022
NCS S 2010-Y20R
LRV 50%



KRAFT
14612 032
NCS S 4030-Y30R
LRV 25%



HONEY
14612 012
NCS S 2040-Y20R
LRV 39%



CANDY
14612 035
NCS S 2030-Y80R
LRV 35%



BLUSH
14612 034
NCS S 3040-Y80R
LRV 20%



CROCODILE
14612 091
NCS S 5010-G30R
LRV 23%



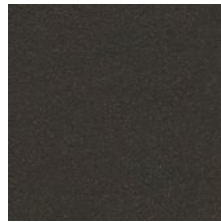
DENIM
14612 070
NCS S 4020-B
LRV 22%



METAL
14612 001
NCS S 3502-Y
LRV 37%



SILVER
14612 003
NCS S 4502-B
LRV 23%



BLACK
14612 098
NCS S 8502-B
LRV 5%



Lino Materiale Crocodile 091
Lino Materiale Candy 035
LinoWall Cotton 122

Datasheet



Classification	Norm	Tarkett Value
Product type	ISO 24011	Plain and decorative linoleum
Domestic classification	EN ISO 10874	23 Heavy
Commercial classification	EN ISO 10874	34 Very Heavy
Industrial classification	EN ISO 10874	43 Heavy
Technical Characteristics	Norm	Tarkett Value
Surface treatment		xf ² [™]
Total thickness	ISO 24346	2,50 mm
Total weight	ISO 23997	2650 g/m ²
Flexibility	ISO 24344 Method A	≤ 30 mm ø
Average measured value: 15 mm ø		
Performance for CE Marking	Norm	Tarkett Value
CE Marking	EN 14041	EN 14041
Declaration of Performance #	EN 14041	0200-0044-DoP-2013-07
Reaction to fire	EN13501-1	Cfl-s1 glued on non combustible substrate
Slip resistance	DIN 51130	R9
Slip resistance	EN 13893	Class DS (μ ≥ 0,30)
Static electrical propensity	EN 1815	Antistatic (≤ 2 kV)
Technical Performance	Norm	Tarkett Value
Residual indentation	EN ISO 24343-1	≤ 0,15 mm
Average measured value: ca. 0,08 mm		
Impact sound reduction – ΔLw	EN ISO 10140-3 / 717-2	9 dB
Reduction of in-room impact noise	NF S31-074	Class B (≤ 75 dB)
Castor chair	EN ISO 4918	Suitable for office chairs with castors type W (Norm EN 12529)
Chemical resistance	ISO 26987	Resistant to dilute acids, oils, fats, current solvents and alkalis
Underfloor heating		Suitable (subfloor temperature maximum 27°C)
Light fastness	ISO 105-B02	≥ 6
Determination of antibacterial activity	ISO 22196	Naturally antibacterial (Bacteria mix – Ecoli and MRSA)
Sustainability Performances	Norm	Tarkett Value
Carbon footprint		
EPD Modules A1-A3 (Cradle-to-Gate)	ISO 14025	-1,70 kg CO ₂ eq/m ²
EPD Modules A-D with recycling scenario	ISO 14025	-1,92 kg CO ₂ eq/m ²
Recyclability through ReStart®		Offcuts and post-use / Contact Tarkett for more information
Recycled content		39 %
Total VOC emissions (after 28 days)	EN 16516	Platinum (≤ 10 μg/m ³)
Dimensions and designs		
Roll		Roll 2 × ≤ 32m
Number of designs available		10

LINO MATERIALE flooring product is to be installed in full accordance with Tarkett's installation instructions and recognized trade standards. To retain its aspect, an effective, regular cleaning and maintenance program must be followed in accordance with Tarkett's instructions.

Note: Tarkett reserves the right to change this specification without prior notice; changes are subject to normal production tolerances.

According to the European Regulation N° 305/2011 for CE Marking, the Declarations of Performance are available on our website www.tarkett.com





Lino Materiale Denim 070
Lino Materiale Blush 034
LinoWall Candy 135

Natural yellowing effect: Due to its natural production process, linoleum may have a slight yellow tint when unpacked. This disappears within 24 hours of sunlight exposure but can reappear under furniture. It will disappear once exposed to daylight.

Crafted from natural ingredients and shaped through a distinctive production process, each linoleum surface displays subtle, non-repetitive variations in pattern and colour. As the samples in this card may not fully reflect the material's complete richness, we recommend requesting a larger sample before making your final selection.

About Tarkett

With a history of more than 140 years, Tarkett is a worldwide leader in innovative and sustainable flooring and sports surface solutions, generating turnover of €3.3 billion in 2025. The Group has close to 12,000 employees, 25 R&D centers, 8 recycling centers and 33 production sites. Tarkett creates and manufactures solutions for hospitals, schools, housing, hotels, offices, stores and sports fields, serving customers in over 100 countries. To build "The Way to Better Floors," the Group is committed to circular economy and sustainability, in line with its Tarkett Human-Conscious Design® approach.

www.tarkett-group.com

© Tarkett, March 2026

Descriptions, colours and specifications are subject to change without notice. Tarkett is not responsible for typographical/photographical errors. Actual product may differ from illustration. All rights reserved. Reproduction in whole or in part is prohibited without the prior written consent of the copyright owner. The information presented in this document does not form part of any quotation or contract, is believed to be accurate and reliable and may be changed without notice. No liability will be accepted by the publisher for any consequence of its use. Publication thereof does not convey nor imply any license under patent or other industrial or intellectual property rights. In case of doubt or differences of interpretation, the English version shall prevail over all other language versions.