

VCT

Vinyl Composition Tiles

Style and
strength where
they are most
needed

EXIT

Naturalia

Naturalia is available in 3 formats:
2mm – Tile 30 x 30 cm – 356001
3mm – Tile 30 x 30 cm – 356002
3mm – Tile 45 x 45 cm – 356003



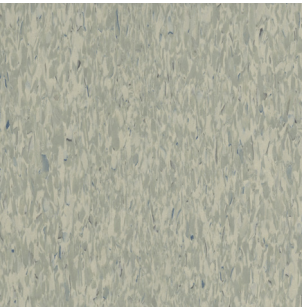
001



002



003



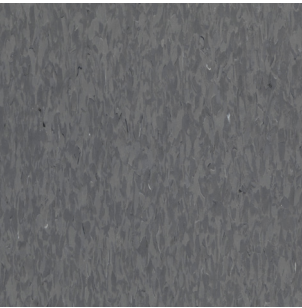
004



005



006



007



010



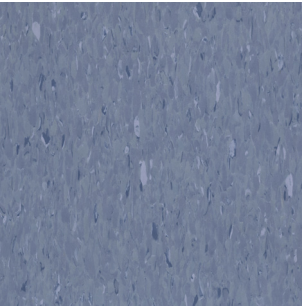
012



013



015



016



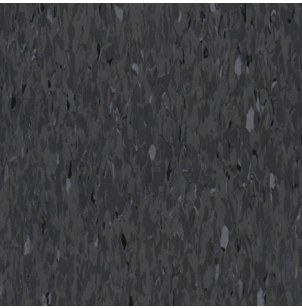
017



020



021



022



Naturalia 020 / 007

Naturalia Plus

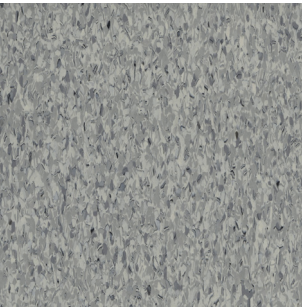
Naturalia Plus is available in 1 format:
Available in 3mm – Tile 45 x 45 cm



356004 001



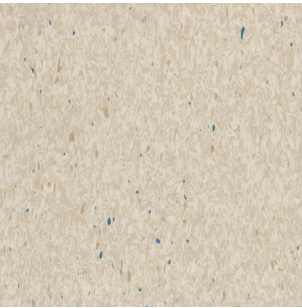
356004 002



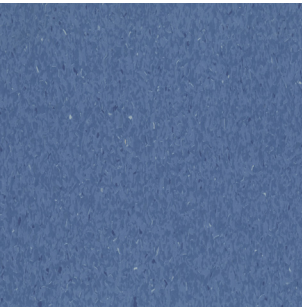
356004 003



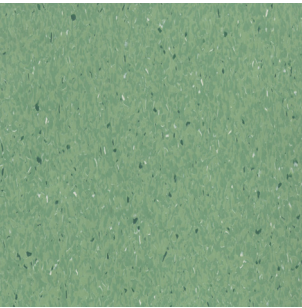
356004 007



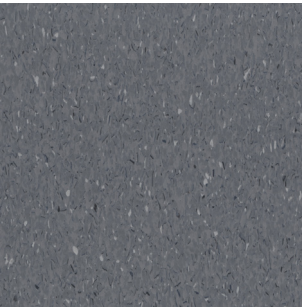
356004 009



356004 010



356004 011



356004 012



Naturalia Plus 010



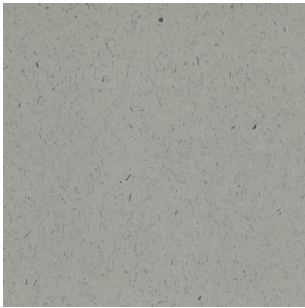
Naturalia Plus 011 / Naturalia 002

Pastelito

Pastelito is available in 1 format:
Available in 3mm – Tile 45 x 45 cm



356006 001



356006 002



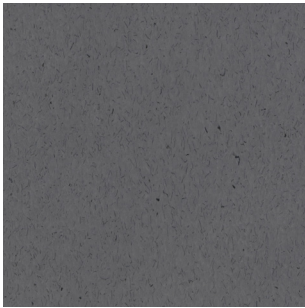
356006 003



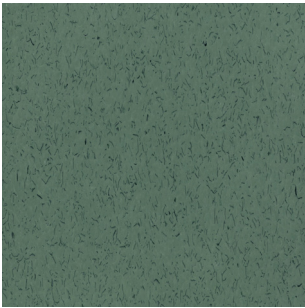
356006 004



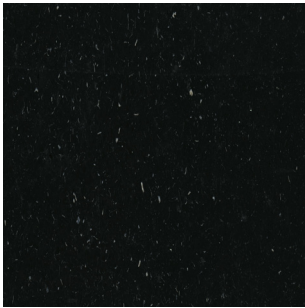
356006 005



356006 006



356006 007



356006 008



Pastelito 004 / 001



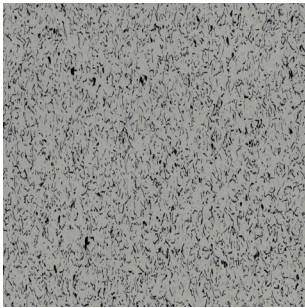
Pastelito 007 / 003

Conductivity

Conductivity is available in 1 format:
Available in 3mm – Tile 45 x 45 cm



001



002

Electrical Characteristics

Critical Radiant Flux	ASTM E 648	1.1 watts/cm²
Surface resistance	ASTM F 150	$2.5 \times 10^4 - 1.0 \times 10^6 \Omega$, 500V



Conductivity.001 / 002



TECHNICAL DATASHEET

Classification	Standards	VCT
Classification	ASTM F1066	Vinyl Composition Tile - Commercial Use Class 2 Through Pattern
	ISO 10595	Type II

Technical characteristics			
Total thickness	ASTM F 386	2 mm (5/64 in.) 3 mm (1/8 in.)	
Wear Layer	ASTM F1066	Chip Through Pattern	
Total weight	-	4242 g/m² - 21 kg/box	
Surface treatment (PUR)	-	Yes	
Form of delivery	Tiles	2 mm 30 x 30 cm	55 tiles / box (4.95m2) 72 boxes/pallet (356.4 m2) 12 pallets / 20' container (4,277 m2)
		3 mm 30 x 30 cm	37 tiles / box (3.32m2) 72 boxes/pallet (239 m2) 12 pallets / 20' container (2,868 m2)
		3 mm 45 x 45 cm	16 tiles / box (3.24m2) 72 boxes/pallet (233 m2) 12 pallets / 20' container (2,799 m2)

Technical performance		
Thickness	ASTM F 386	Nominal ± 0.005
Size	ASTM F 2055	± 0.016 in. per linear foot
Squareness	ASTM F 2055	0.010 in. max
Indentation-One Minute	ASTM F 1914	≥ 0.006 in. to ≤ 0.015 in.
Indentation-115°F	ASTM F 1914	< 0.032 in.
Impact	ASTM F 1265	No cracks beyond limit (for 3mm only)
Deflection	ASTM F 1304	1.0 in. minimum
Dimensional Stability	ASTM F 2199	≤ 0.024 in. per linear foot
Chemical Resistance	ASTM F 925	No more than slight change in surface dulling, attack or staining
Resistance to Heat	ASTM F 1514	ΔE not greater than 8.0
Static Load Resistance	ASTM F 970	≤ 0.005 in.

Electrical Characteristics – Conductivity Range

Critical Radiant Flux	ASTM E 648	1.1 watts/cm²
Surface resistance	ASTM F 150	2.5 x 10 ⁴ - 1.0 x 10 ⁶ Ω, 500V

The above information is subject to modification for the benefit of further improvement (12/2020).
For the latest information, please visit our website: www.Tarkett-asia.com
Tarkett's instructions regarding installation, cleaning and maintenance should be observed.



Installation Instructions

Before Installation

- All Tarkett products must be stored in an indoor, climate-controlled space and be protected from the elements. Temperature must be maintained between 18°C and 30°C with a relative humidity between 40% and 60%. Tarkett flooring and adhesives must be site conditioned at room temperature for 48 hours prior to, during, and after installation.
- All cartons must be stored on a dry, flat, level surface. Cartons must be carefully stacked squarely on top of one another and never be stored on edge.
- Tarkett products are not recommended for exterior use.
- All subfloors must be permanently dry, clean, smooth, and structurally sound. The surface must be free of all dust, loose particles, solvents, paint, grease, oil, wax, alkali, sealing/curing compounds, old adhesive, and any other foreign material, which could affect the installation and adhesive bond to the substrate. Permanent and non-permanent markers, pens, crayons, paint, or similar marking tools used to mark the substrate, or the back of the resilient flooring material will cause migratory staining.
- Tarkett does not recommend installing over existing resilient floors. All existing flooring and adhesives must be mechanically removed prior to installing the new flooring material – Do not use chemical adhesive removers or solvents.

Installation

- Batch numbers should not be mixed during the installation.
- Square the area and establish reference points on the substrate.
- For Naturalia VCT:
 - We recommend the use of Water-based Acrylic Adhesive.
 - Apply the adhesive to the substrate and proper open time.
- For Conductivity VCT:
 - Ground installation is required with copper strip and copper plates (thickness 0.05mm, width 25mm, length 600mm or more), spaced 6-8mm apart.
 - The subfloor may be **very even and flat** to ensure copper ground strips work properly. Install the copper foil before start to lay tile on the floor.
 - Apply **Conductive Adhesive** to the substrate and proper open time. Open and working times are dependent on the ambient temperature, humidity, substrate porosity and temperature, and air movement. It is the installer's responsibility to modify the open and working time for jobsite conditions.
- Tiles should be lightly butted together when placing the flooring into the adhesive.
- Do not force tiles together creating a ledge condition at the seams and corners. Sliding tiles will force the adhesive out between the seams.
- Periodically, lift the corner of an installed tile to ensure proper transfer of adhesive.
- Roll floor in both directions with a 100 pound three-section roller. Use a small hand roller in areas that cannot be reached with a large roller.
- Inspect the floor surface, especially seams, and remove any adhesive on the surface

Post-Installation

- We recommend that the installation of new flooring material not be performed until all the other trades have completed their work. Proper precautions must be taken during and after the installation process to avoid damage to the newly installed flooring.
- Temperature must be maintained between 18°C and 30°C with a relative humidity between 40% and 60% for at least 24h after installation. All traffic must be restricted for a minimum of 24 hours after installation.
- All heavy traffic, rolling loads, pallet jacks, and furniture or appliance placement must be restricted for a minimum of 72 hours after installation.
- Flooring must be swept or vacuumed to remove loose dirt and grit prior to the application of proper floor protection. (Do not trap dirt and grit under floor protection.)
- After the floor has been cleaned with a neutral detergent, apply wax 2-3 times. **For Conductivity VCT: Apply Conductive wax coating.**



Maintenance Instructions

Post-Installation / Initial Cleaning

- Job site conditions will cause grit and dirt to accumulate. Initial cleaning must not be performed until 72 hours after installation. However, it is necessary the floor be swept and protected until maintenance begins.
- Thoroughly sweep or vacuum the flooring to remove all loose dirt and grit.
- Prepare a cleaning solution using a neutral PH detergent solution. Follow the manufacturer's label instructions for dilution.
- Apply the cleaning solution with a nylon or rayon mop, or pump type sprayer. DO NOT FLOOD THE FLOOR.
- Let the cleaning solution dwell for 5 to 15 minutes (dwell time is based on soil conditions of the floor). DO NOT ALLOW THE SOLUTION TO DRY.
- Scrub the flooring using a single disc rotary machine (175 – 350 RPM) equipped with a 3M 5100 red pad / 3M 5300 blue pad or equivalent. In small areas, use a deck brush attached to a handle. DO NOT USE BROWN OR BLACK PADS.
- Remove the cleaning solution using a wet vacuum or a mop.
- Rinse the floor thoroughly with clean water.
- Allow the flooring to dry completely.
- NOTE: The cleaning process may need to be repeated on heavily soiled floors.
- Three to five coats of a recommended floor finish must be applied prior to placing the floor into service. Apply the finish to the floor according to the manufactures label instructions.
- Allow the floor finish to dry completely between coats.
- Restrict all traffic until the floor finish has dried completely

Preventive Care

- An effective barrier matting system should be installed at all entrances to reduce cleaning costs and extend the life of the floor.
- Protect the flooring from damage by using good quality protective glides and casters for chairs, tables, and other furniture using products designed for resilient floors. Caster or wheel damage, in workstations or similar environments, can be avoided with the use of chair pads.
- Do NOT use steel wool, strong solvents (gasoline, turpentine, and acetone), or all-purpose cleaners (Lestoil, Top Job, etc. and similar products).
- Do NOT use sweeping compounds or mops treated with petroleum solvents, silicone compounds or loose abrasives that damage the flooring.
- Do NOT use disinfectant cleaners and insecticide sprays containing oil or solvents that may settle on the floor in sufficient quantity to discolor, cause slipperiness, and harm the flooring.

Daily Cleaning

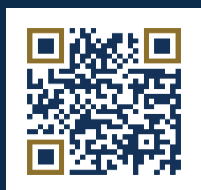
- It is very important to clean the flooring at a frequency consistent with the amount and type of traffic and soil conditions. Daily cleaning is recommended.
- Thoroughly sweep or vacuum the flooring to remove all loose dirt and grit.
- Prepare a cleaning solution using one of the recommended pH neutral cleaners identified on the reference chart below.
- The dilution ratio depends on light to heavy soil conditions. Follow the manufactures label instructions.
- Damp mop the cleaning solution onto the floor with a nylon or rayon mop or utilize an auto scrubber equipped with a 3M 5100 red pad or equivalent. Check the manufacturer's label instructions for proper use. DO NOT FLOOD THE FLOOR.
- Allow the flooring to dry completely.
- Remove minor stains and scuffs in conjunction with the damp mopping. Use a white or red pad if required.

Deep Cleaning

- When Routine / Daily Cleaning no longer provides adequate results, a more aggressive deep cleaning is required to thoroughly clean the floor.
- Thoroughly sweep or vacuum the flooring to remove all loose dirt and grit.
- Prepare a cleaning solution using one of the recommended pH neutral cleaners identified on the reference chart below.
- The dilution ratio depends on light to heavy soil conditions. Follow the manufacturer's label instructions.
- Apply the cleaning solution with a nylon or rayon mop, or pump type sprayer. DO NOT FLOOD THE FLOOR.
- Let the cleaning solution dwell for 5 to 15 minutes (dwell time is based on soil conditions of the floor). DO NOT ALLOW THE SOLUTION TO DRY.
- Scrub the flooring using a single disc rotary machine (175 – 350 RPM) equipped with a 3M 5100 red pad or equivalent. In small areas, use a deck brush attached to a handle. DO NOT USE BROWN OR BLACK PADS.
- Remove the cleaning solution using a wet vacuum or a mop.
- Rinse the floor thoroughly with clean water.
- Allow the flooring to dry completely.
- NOTE: The cleaning process may need to be repeated on heavily soiled floors.

Floor Finish Restorative Procedure

- When the floors gloss level appears worn or uneven due to traffic the floor finish can be removed and reapplied to restore the floors appearance.
- Floor Finish Removal:
 - Thoroughly sweep or vacuum the flooring to remove all loose dirt and grit.
 - Prepare a stripping solution and follow the manufacturer's label instructions for proper mixing ratios and use.
 - Apply the stripping solution with a nylon or rayon mop, or pump type sprayer. DO NOT FLOOD THE FLOOR.
 - Let the stripping solution dwell for 5 to 15 minutes. DO NOT ALLOW THE SOLUTION TO DRY.
 - Scrub the floor using a single-disc rotary machine (175-350 RPM) equipped with a 3M 5300 blue pad or equivalent. DO NOT USE BROWN OR BLACK PADS.
 - Remove the stripping solution with a wet vacuum or a mop.
 - Thoroughly rinse the floor and allow it to dry completely.
 - Repeat the stripping process if necessary.
 - Apply the new floor finish as outlined below.
- Application of floor finish:
 - Perform a stripping procedure as outlined above in Floor Finish Removal.
 - Select a floor finish suitable for use on resilient flooring. Apply the floor finish to the floor according to the manufacturer's label instructions.
 - Apply three to five coats of finish. Apply additional coats as recommended or required.
 - The floor finish must dry completely between coats.
 - Restrict all traffic until the floor finish has dried completely



More information on: www.tarkett-asia.com

