

Tandus Centiva

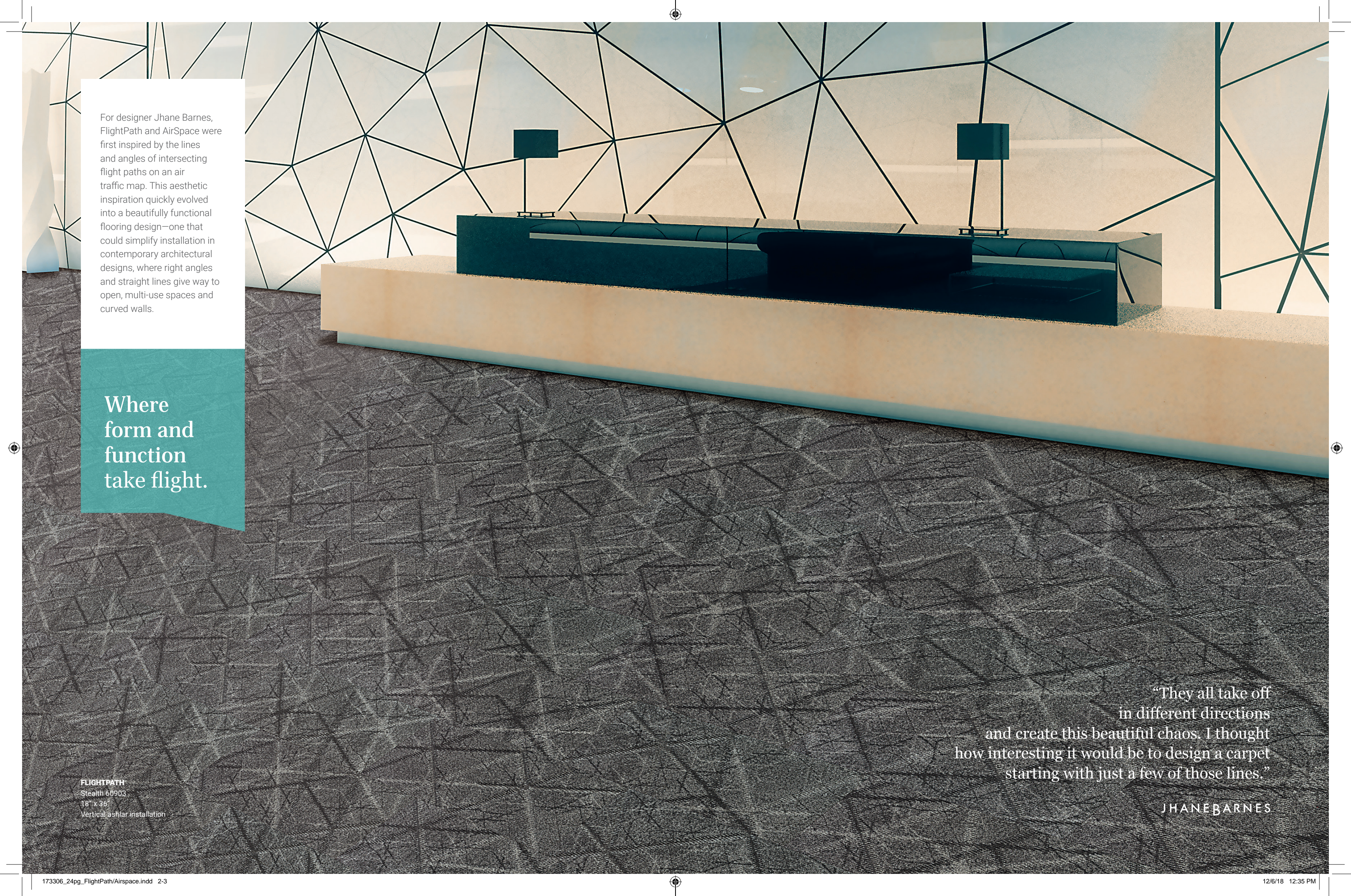
FlightPath + AirSpace

POWERBOND® + MODULAR

Ready
for
takeoff.

JHANE BARNES





For designer Jhane Barnes, FlightPath and AirSpace were first inspired by the lines and angles of intersecting flight paths on an air traffic map. This aesthetic inspiration quickly evolved into a beautifully functional flooring design—one that could simplify installation in contemporary architectural designs, where right angles and straight lines give way to open, multi-use spaces and curved walls.

Where
form and
function
take flight.

FLIGHTPATH
Stealth 60903
18" x 36"
Vertical ashlar installation

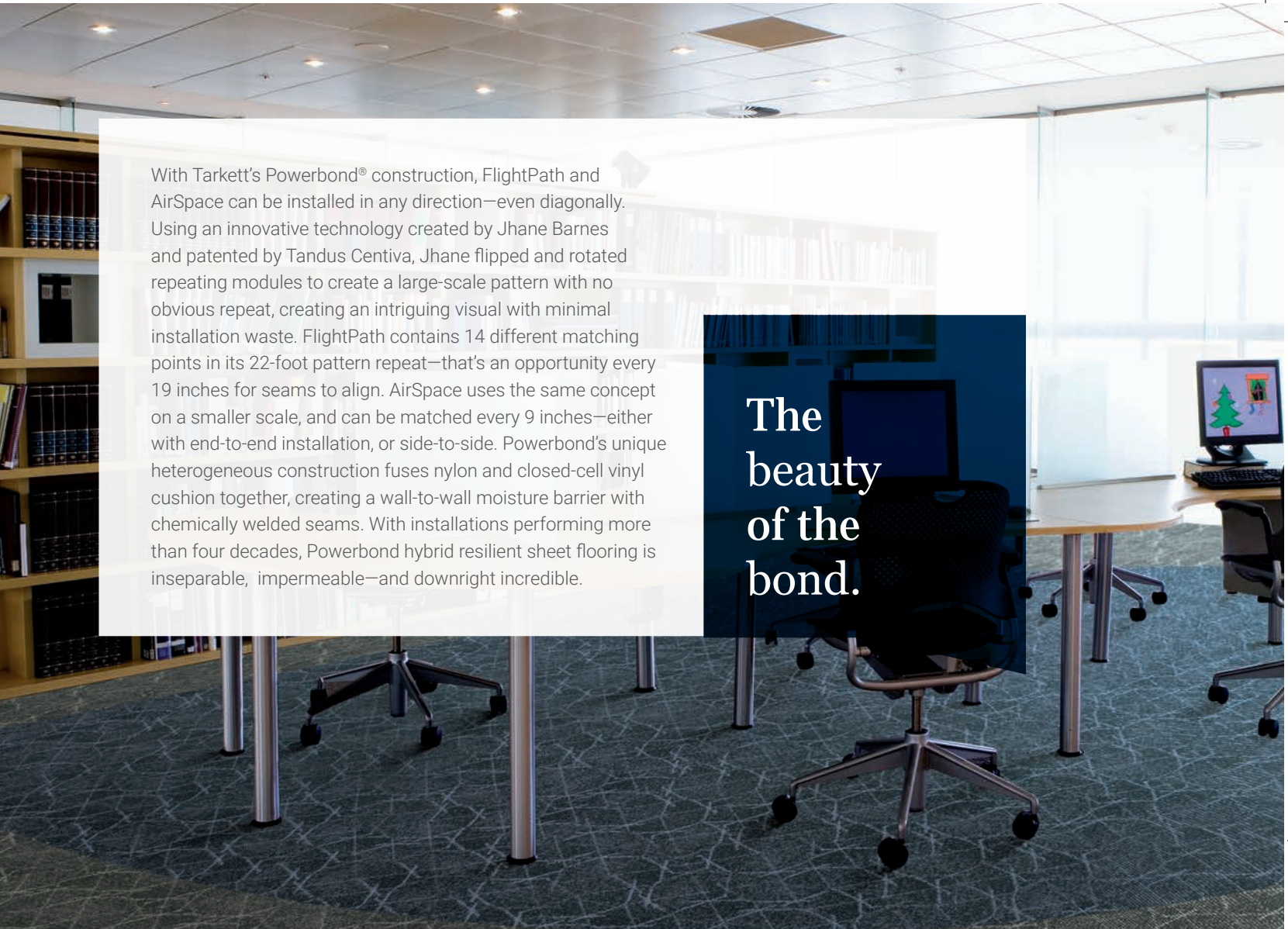
“They all take off
in different directions
and create this beautiful chaos. I thought
how interesting it would be to design a carpet
starting with just a few of those lines.”

JHANE BARNES



FLIGHTPATH
Static Lift 60902
Powerbond installation

JHANE BARNES



With Tarkett's Powerbond® construction, FlightPath and AirSpace can be installed in any direction—even diagonally. Using an innovative technology created by Jhane Barnes and patented by Tandus Centiva, Jhane flipped and rotated repeating modules to create a large-scale pattern with no obvious repeat, creating an intriguing visual with minimal installation waste. FlightPath contains 14 different matching points in its 22-foot pattern repeat—that's an opportunity every 19 inches for seams to align. AirSpace uses the same concept on a smaller scale, and can be matched every 9 inches—either with end-to-end installation, or side-to-side. Powerbond's unique heterogeneous construction fuses nylon and closed-cell vinyl cushion together, creating a wall-to-wall moisture barrier with chemically welded seams. With installations performing more than four decades, Powerbond hybrid resilient sheet flooring is inseparable, impermeable—and downright incredible.

The
beauty
of the
bond.

JHANE BARNES

AIRSPACE
Night Thunder 60911, Stealth 60903
Powerbond installation

- Side seam matches approximately every 19 inches
- "Match Points" where angles converge marked in blue dots
- 14 different opportunities to match within one repeat down the roll



FLIGHTPATH
Stealth 60903
Powerbond installation

JHANE BARNES

FLIGHTPATH

Airfoil 60901
18" x 36"

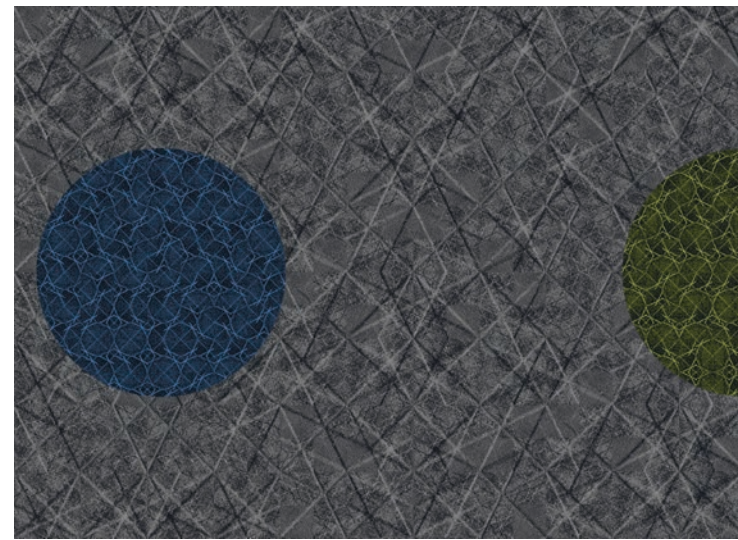
AIRSPACE

Stealth Red 60912
18" x 36"

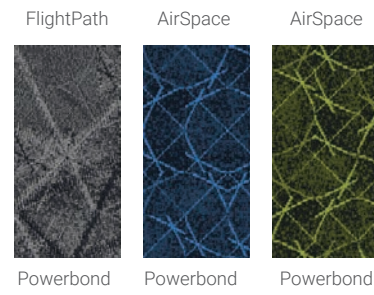
Powerbond and vertical ashlar installation

JHANE BARNES

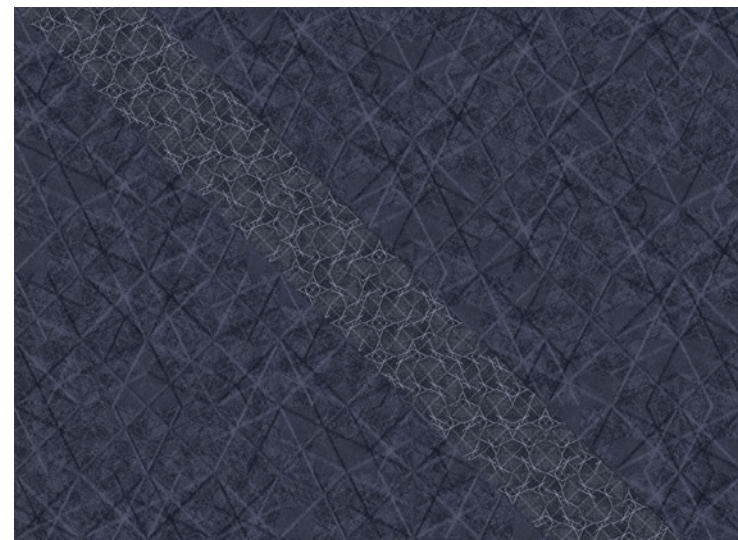
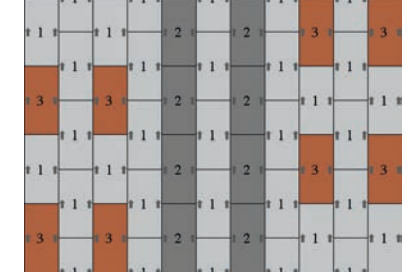
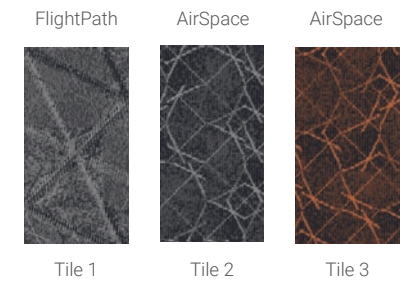
FlightPath + AirSpace Design Inspiration



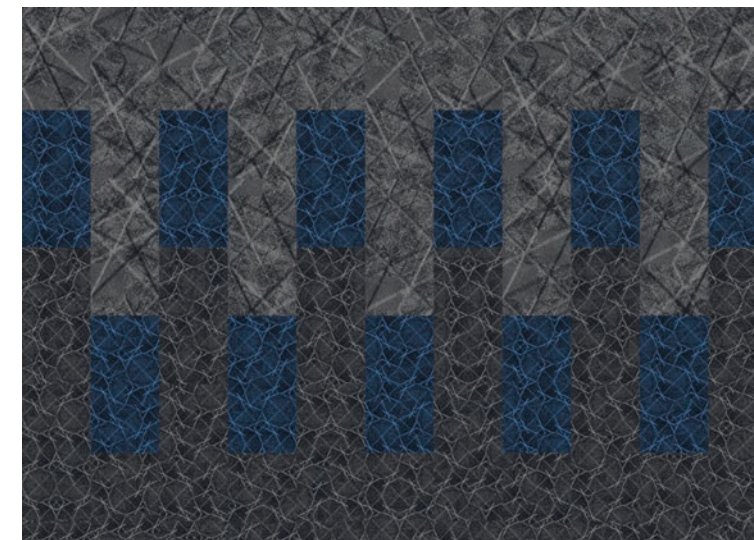
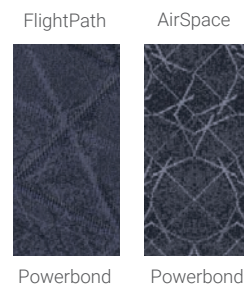
FlightPath Stealth 60903 | AirSpace Stealth Blue 60909 | Stealth Green 60909



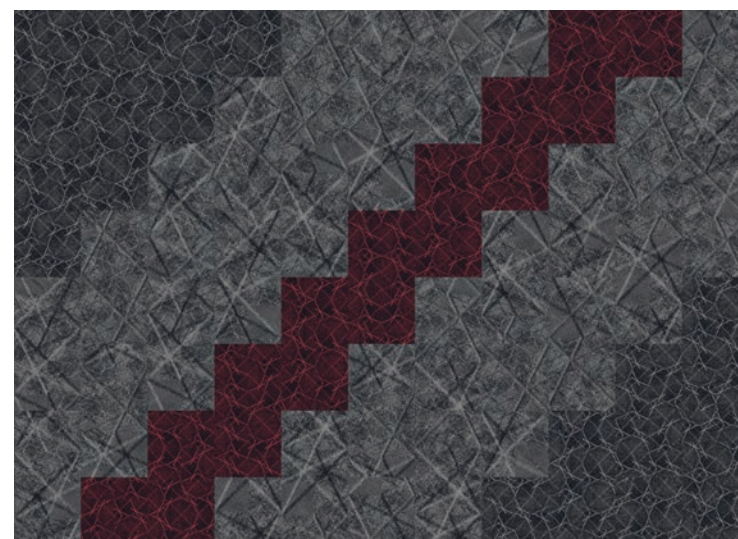
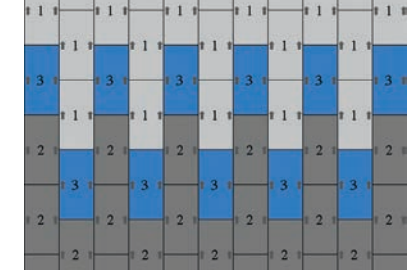
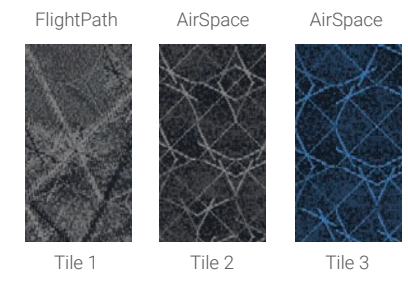
FlightPath Airfoil 60901 | AirSpace Airfoil 60901 | AirSpace Airfoil Orange 60910



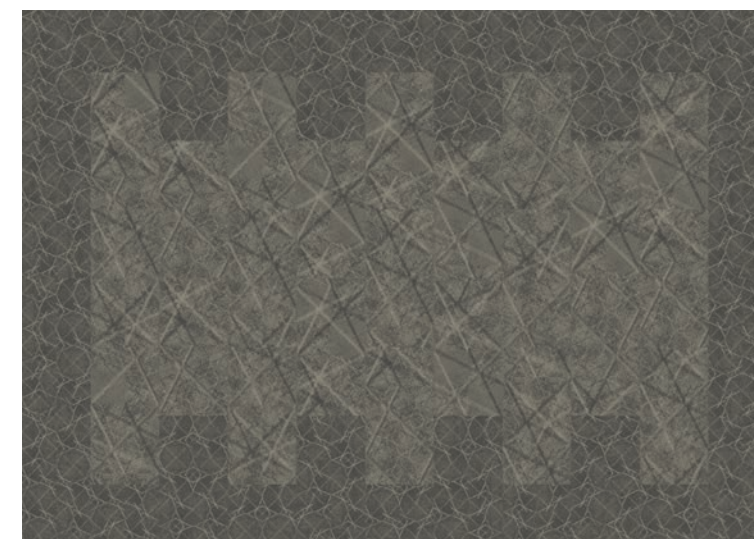
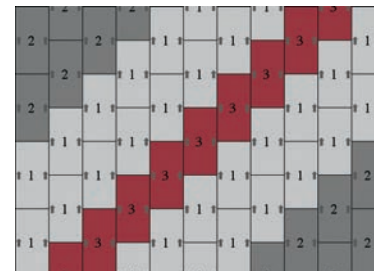
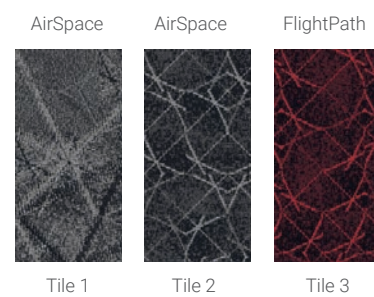
FlightPath Night Flight 60905 | AirSpace Night Thunder 60911



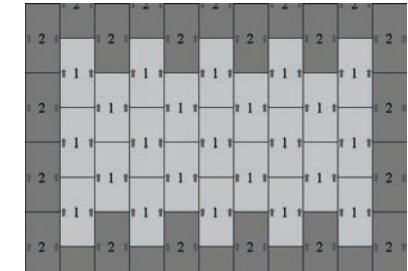
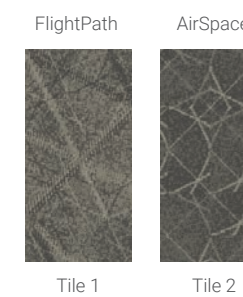
FlightPath Stealth 60903 | AirSpace Stealth 60903 | AirSpace Stealth Blue 60909



FlightPath Stealth 60903 | AirSpace Stealth 60903 | AirSpace Stealth Red 60912



FlightPath Dune Effect 60904 | AirSpace DuneEffect 60904

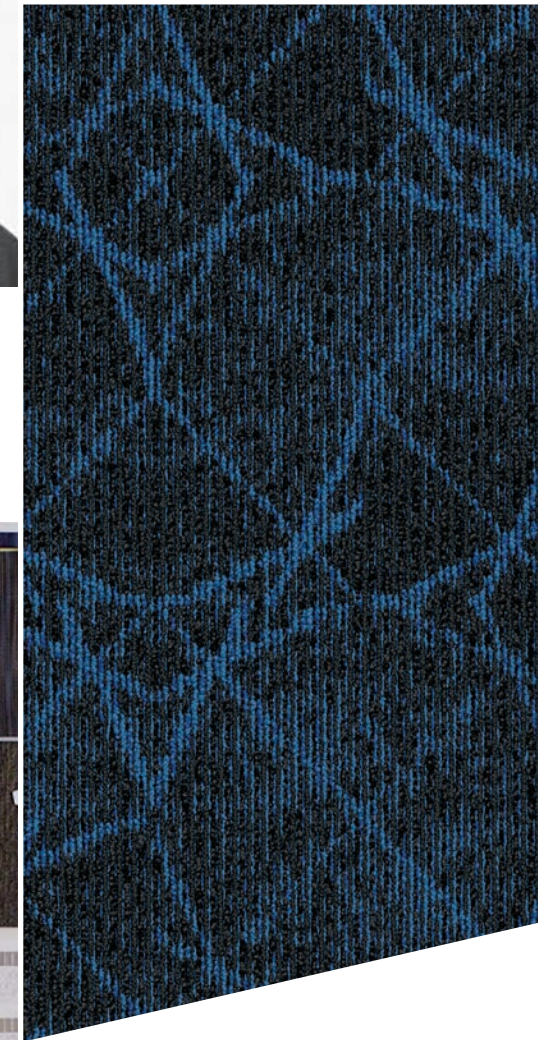
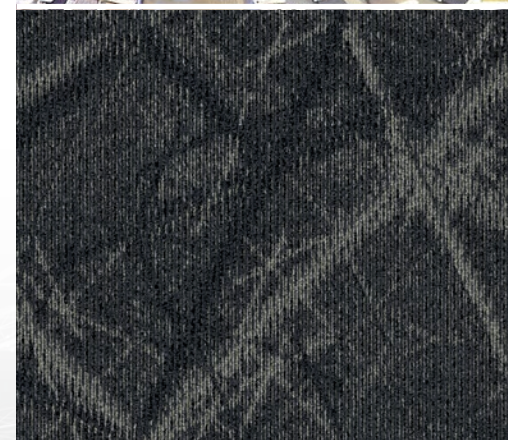


FlightPath + AirSpace Color Coordinates

FLIGHTPATH	60903	60901	60905	60906	60904	60902
	STEALTH	AIRFOIL	NIGHT FLIGHT	GROUND CONTROL	DUNE EFFECT	STATIC LIFT
AIRSPACE	60903	60901	60905	60906	60904	60902
	STEALTH	AIRFOIL	NIGHT FLIGHT	GROUND CONTROL	DUNE EFFECT	STATIC LIFT
	60909	60907	60911			
	STEALTH BLUE	AIRFOIL STREAM	NIGHT THUNDER			
	60912	60910				
	STEALTH RED	AIRFOIL ORANGE				
	60908					
	STEALTH GREEN					



JHANE BARNES



Jhane Barnes' 38-year fashion career saw her menswear label grace the shelves of stores like Neiman Marcus, Saks, and Nordstrom. She didn't stop there! She designed textiles for Knoll for 14 years, furniture for Bernhardt for 10 years, and carpet for Tandus Centiva, now 20 years and counting.

Her innovative carpet tile and Powerbond products for Tandus Centiva have been revolutionary. She uses a blend of science and art, incorporating mathematics into many of the products she designs using her custom developed software—software that creates patterns using algorithms. Much of her career has been built on pushing boundaries. She continues to push those boundaries with her current designs. Recently she has been designing custom patterns for large scale airports and university installations, along with regular new releases.



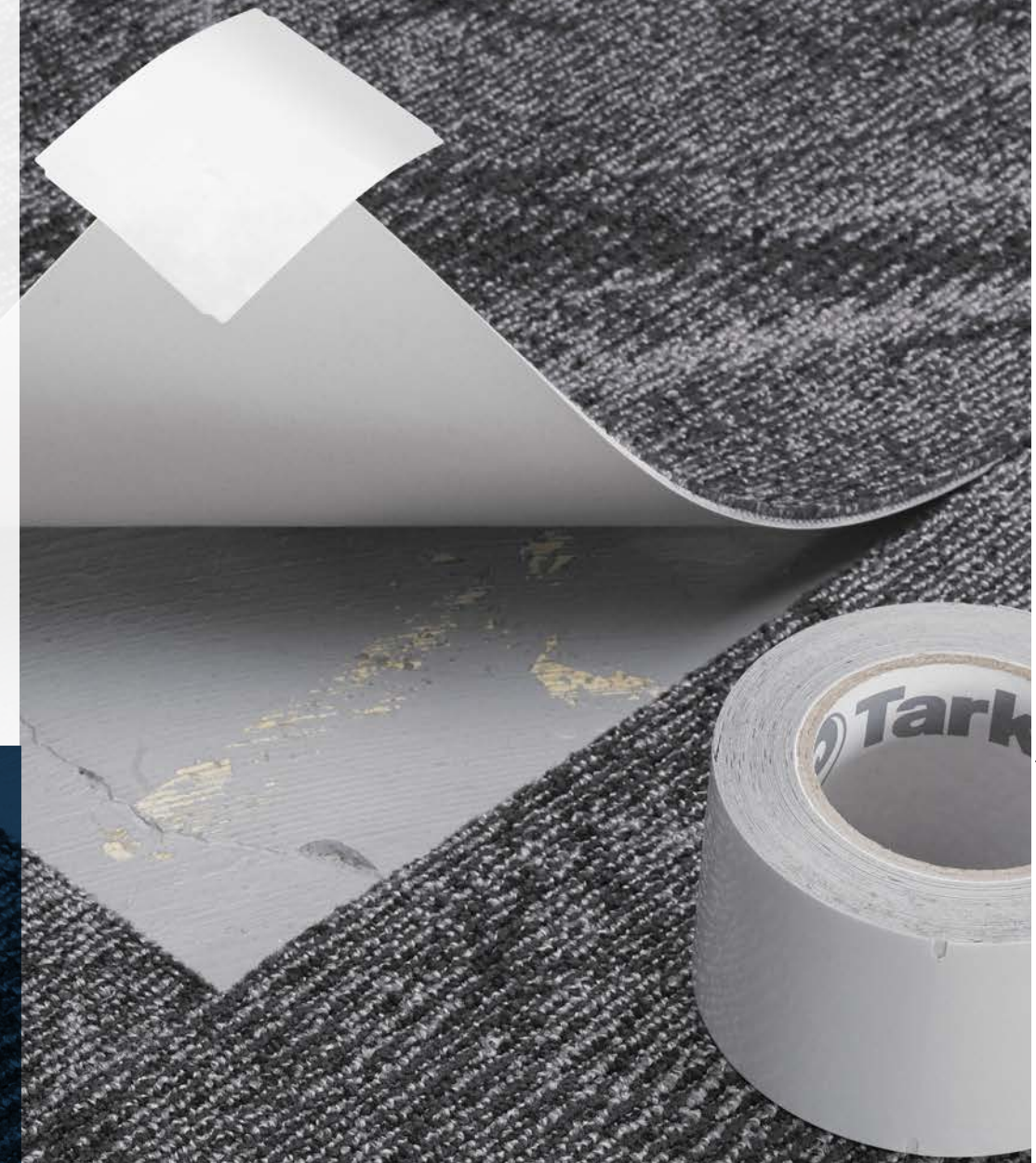
AIRSPACE
Airfoil 60901, Airfoil Stream 60907
18" x 36"
Vertical ashlar installation

JHANE BARNES

**ethos® MODULAR
WITH OMNICOAT
TECHNOLOGY™**

Don't lose time and money on challenging substrate issues—ethos® Modular with Omnicoat Technology™ eliminates installation problems before they happen. Its breakthrough, proprietary coating creates a chemical barrier that works on any adverse flooring substrate—from green and chemically abated concrete to old adhesives. And as long as there's no evidence of standing liquids or moisture staining, ethos **eliminates the need for moisture, pH and MVER testing** when installed with TarkettTAPE™.

**Overcome
what lies
beneath.**



Joy means
using the
whole box
of crayons.

Based on our latest design research in education and healthcare spaces, the Color Play palette was carefully constructed to include 24 hues in each of three mix-and-match pattern options, for a total of 72 product solutions that support the needs of every age group. All are available in 6" x 36", 9" x 36" and 18" x 18" planks and tiles, providing endless options for creative installation and one-of-a-kind wayfinding. From K through 12 to higher education and pediatric exam rooms to acute care reception, these coordinating colors and grounding neutrals help to establish just the right atmosphere for the task at hand—and work beautifully with the FlightPath and AirSpace palettes.

AIRSPACE

Stealth Blue 60909
Powerbond installation

METAEDGE™ TRANSITION

ME003 Ironstone 00178 with
ME004 Leveling Strip

COLOR WEAVE

Leprechaun PCWE C153, Azul PCWE C150,
Angora PCWE C169, Koala PCWE C161
18" x 18"
Monolithic installation

JHANE BARNES

COLOR BEAM

 PCBE C100 URCHIN	 PCBE C102 JEWEL	 PCBE C101 JUNIPER	 PCBE C103 CERULEAN	 PCBE C104 VERIDIAN	 PCBE C105 VERDE
 PCBE C111 SCARLET	 PCBE C110 RUBY	 PCBE C109 PUMPKIN	 PCBE C108 TABBY	 PCBE C107 GOLDENROD	 PCBE C106 STRAW
 PCBE C113 MOONLIGHT	 PCBE C114 MANTA GREY	 PCBE C121 FLANNEL	 PCBE C119 DUKE	 PCBE C115 POWDER GREY*	 PCBE C120 ECLIPSE*
 PCBE C112 ALABASTER	 PCBE C116 LACE	 PCBE C123 SOBA	 PCBE C118 TUMBLEWEED	 PCBE C117 CARAMEL*	 PCBE C122 CORDOROY*

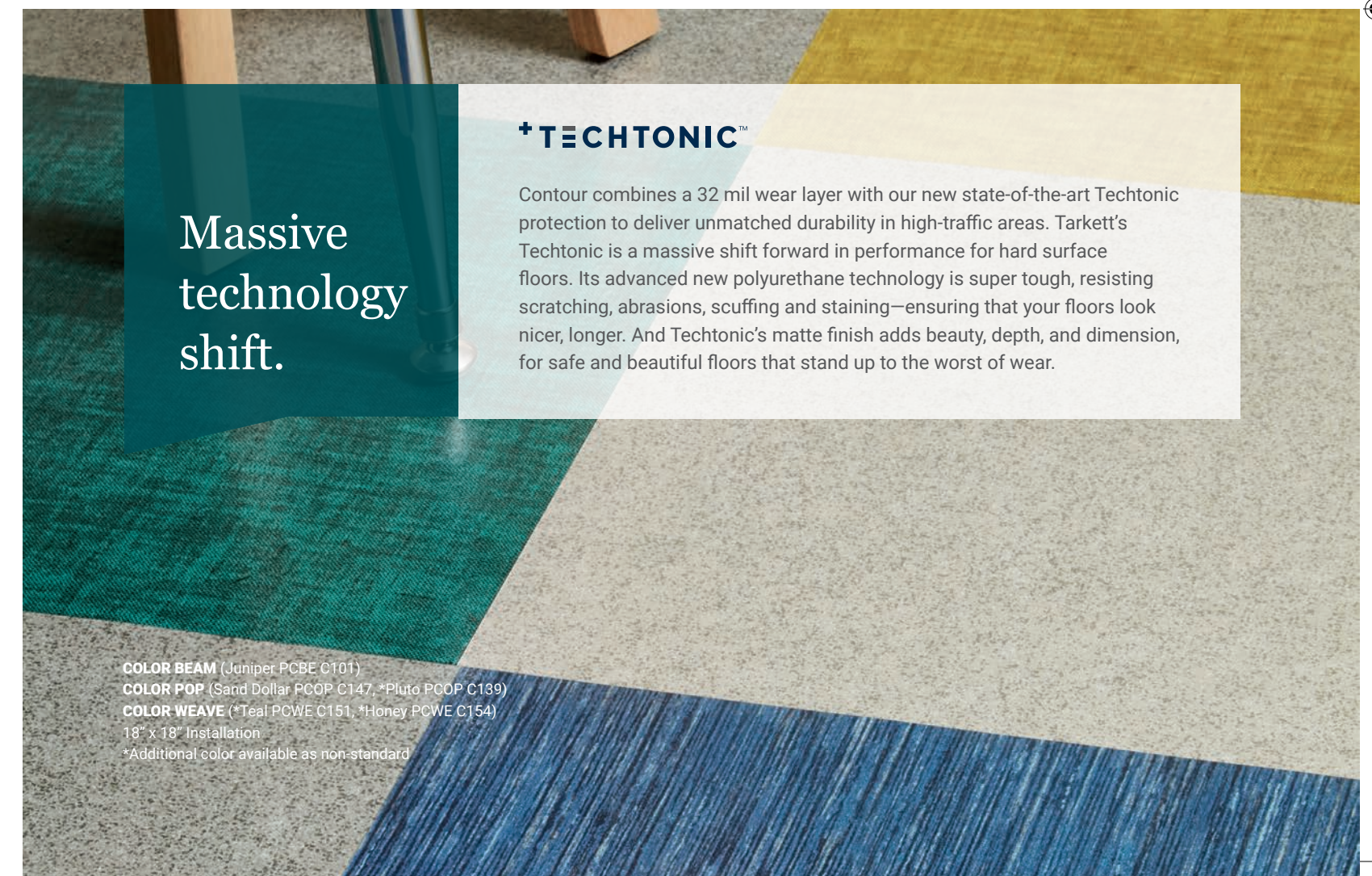
* Additional colors available.

COLOR POP

 PCOP C124 PLUM	 PCOP C126 BABE	 PCOP C125 SATURN SKY	 PCOP C127 BERMUDA	 PCOP C128 MALLARD	 PCOP C129 CLOVER
 PCOP C135 MERLOT	 PCOP C134 CARDINAL	 PCOP C133 ORIOLE	 PCOP C132 PAPRIKA	 PCOP C131 DANDELION	 PCOP C130 FLAN
 PCOP C137 BOMBAY BEACH	 PCOP C138 SALTON SEA	 PCOP C139 PLUTO*	 PCOP C145 SEA SALT	 PCOP C143 NAVAL	 PCOP C144 COAL*
 PCOP C136 BLANCA	 PCOP C140 MACAROON	 PCOP C147 SAND DOLLAR	 PCOP C142 CHESTNUT	 PCOP C141 APRICOT*	 PCOP C146 MALT

COLOR WEAVE

 PCWE C148 VIOLETTA*	 PCWE C150 AZUL*	 PCWE C149 CORNFLOWER*	 PCWE C151 TEAL*	 PCWE C152 HERBAL*	 PCWE C153 LEPRECHAUN*
 PCWE C159 CRIMSON*	 PCWE C158 POPPY*	 PCWE C157 MONARCH*	 PCWE C156 PERU*	 PCWE C155 MUSTARD SEED*	 PCWE C154 HONEY*
 PCWE C161 KOALA	 PCWE C162 THUNDER	 PCWE C163 PEWTER*	 PCWE C169 ANGORA	 PCWE C167 NIGHT BRIGHT	 PCWE C168 ASHBURN*
 PCWE C160 IVORY	 PCWE C164 BLUSH	 PCWE C171 OAT	 PCWE C166 FARROW	 PCWE C165 CORNSILK*	 PCWE C170 HAZELNUT*



+TECTONIC™

Massive
technology
shift.

Contour combines a 32 mil wear layer with our new state-of-the-art Techtonic protection to deliver unmatched durability in high-traffic areas. Tarkett's Techtonic is a massive shift forward in performance for hard surface floors. Its advanced new polyurethane technology is super tough, resisting scratching, abrasions, scuffing and staining—ensuring that your floors look nicer, longer. And Techtonic's matte finish adds beauty, depth, and dimension, for safe and beautiful floors that stand up to the worst of wear.

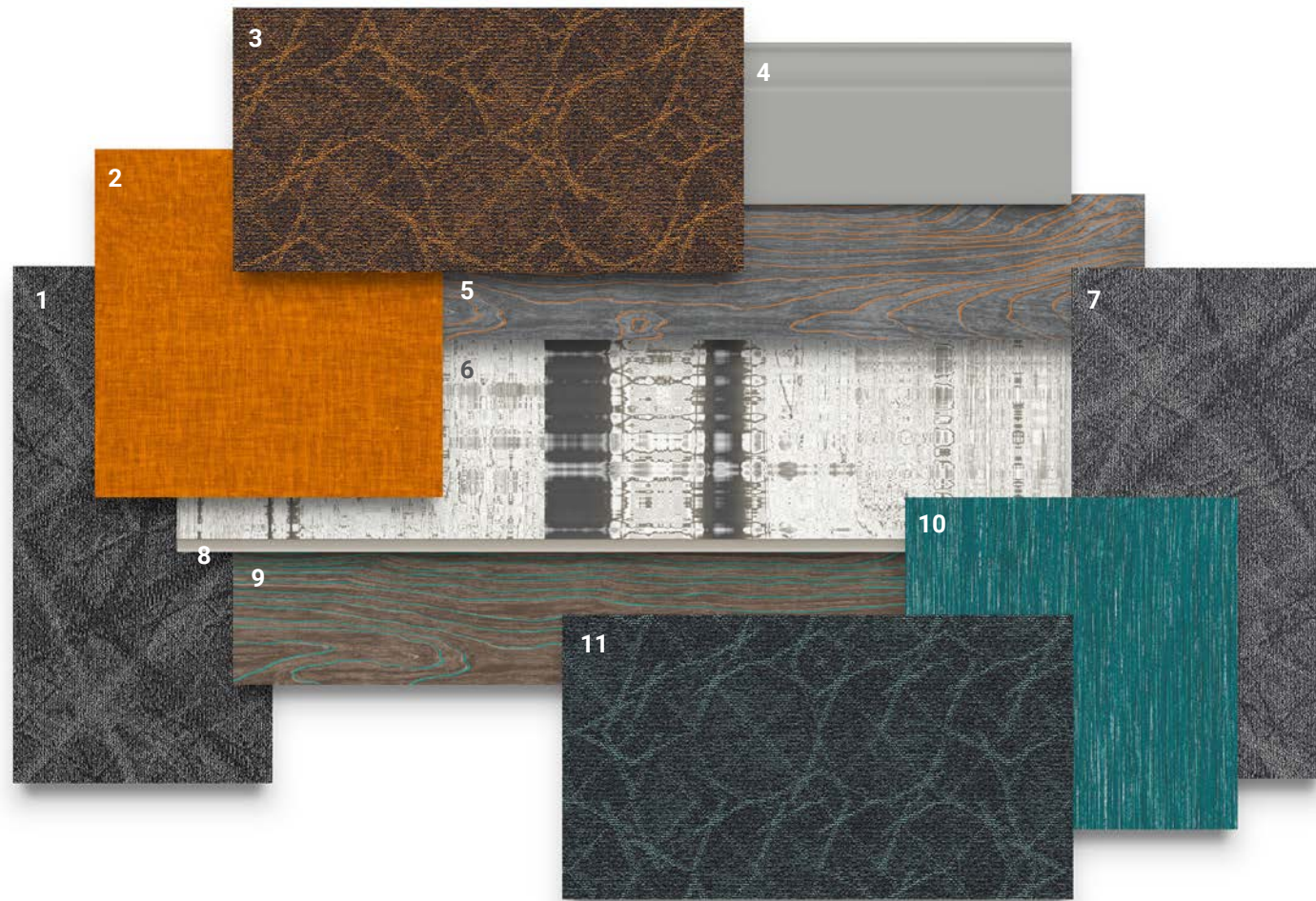
COLOR BEAM (Juniper PCBE C101)
 COLOR POP (Sand Dollar PCOP C147, *Pluto PCOP C139)
 COLOR WEAVE (*Teal PCWE C151, *Honey PCWE C154)
 18" x 18" Installation
 *Additional color available as non-standard

No one covers you better.



At Tarkett, we believe in placing people in the center of every space. So we've developed a portfolio of products designed to work together both functionally and aesthetically. The Tarkett Solution SPECTrum™ has an extensive product offering across all flooring platforms that addresses senior living concerns. We focus on proven attributes like acoustics and slip/fall reducing strategies to enhance living and working environments, while improving resident, staff and visitor satisfaction.

The Tarkett Solution SPECTrum™ helps you expertly recommend a flooring platform for the specific needs of every space and every budget. And our full palette of colors, patterns, and textures is coordinated to work together visually across platforms. So the endless balance of function, safety, and longevity is always done on budget, in style, sustainably. Without compromise.



PRODUCTS SHOWN

- 1. Tandus Centiva Modular: **FLIGHTPATH** (Stealth)
- 2. Tandus Centiva LVT: **CONTOUR ABSTRACT COLOR WEAVE** (Peru)
- 3. Tandus Centiva Modular: **AIRSPACE** (Airfoil Orange)
- 4. JOHNSONITE WALL BASE: **INFLECTION** (Mystify)
- 5. Tandus Centiva LVT: **CONTOUR ABSTRACT FAUX BOIS** (Naranja)
- 6. Tandus Centiva LVT: **CONTOUR WOOD ILLUSION** (Interstellar)
- 7. Tandus Centiva Modular: **FLIGHTPATH** (Airfoil)
- 8. Tandus Centiva Accessories: **METALEDGE** (Steel)
- 9. Tandus Centiva LVT: **CONTOUR ABSTRACT FAUX BOIS** (Celeste)
- 10. Tandus Centiva LVT: **CONTOUR ABSTRACT COLOR BEAM** (Cerulean)
- 11. Tandus Centiva Modular: **AIRSPACE** (Airfoil Stream)

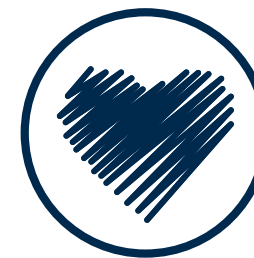
Color may vary from actual swatch. To order a sample, please visit tarkettna.com.

Doing Good– Together.



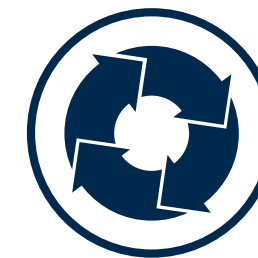
At Tarkett North America, we believe that together, we can make a positive impact on people and the planet. That's why we're Doing Good—Together, connecting our sustainability efforts with what our customers value and our world needs. It's an active, living commitment to create a future where people and the planet prosper in balance. Where sustainable flooring solutions don't just perform, they inspire.

- ethos® Modular with Omniccoat Technology is made with PVB film from recycled windshields and safety glass
- All Tandus-Centiva soft-surface products include Eco-Ensure™ soil protection technology, a fluorine-free chemistry that is *Cradle to Cradle Certified™* Gold for Material Health*
- ethos Modular and Powerbond are *Cradle to Cradle Certified™* Silver v3.1
- ethos Modular is ILFI Living Product Challenge Imperative Certified
- Filament + Techtonic LVT is FloorScore® Certified and Asthma & Allergy Friendly® Certified



DESIGNING FOR LIFE

Developing products based on *Cradle to Cradle®* principles that contribute to people friendly spaces AND respect the planet's natural capital.



CLOSING THE LOOP

Building a circular economy inclusive of programs and business models that encourage take back, reuse, recycling and elimination of waste.



DRIVING COLLABORATION

Inviting others to join us in Doing Good through education, collaboration, transparency and communication.

* For more information visit: www.c2ccertified.org

**FLIGHTPATH
11353**

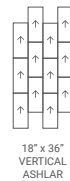


**AIRSPACE
11352**



Coordinate Group:	16	16
Size:	Modular: 9" x 36" (22.9 cm x 91.44 cm) Modular: 18" x 36" (45.72 cm x 91.44 cm) <i>Sample size</i> Modular: 24" x 24" (60.9 cm x 60.9 cm) Powerbond: 6' roll (1.8m)	Modular: 9" x 36" (22.9 cm x 91.44 cm) Modular: 18" x 36" (45.72 cm x 91.44 cm) <i>Sample size</i> Modular: 24" x 24" (60.9 cm x 60.9 cm) Powerbond: 6' roll (1.8m)
Designer:	Jhane Barnes	Jhane Barnes
Surface Texture:	Stratatec® Patterned Loop	Stratatec® Patterned Loop
Yarn Content:	T6,6 Nylon	T6,6 Nylon
Dye Method:	100% Solution-dyed	100% Solution-dyed
Pile Height Average:	0.141 inch (3.6 mm)	0.141 inch (3.6 mm)
Pattern Match:	6' W x 18.9" L	6' W x 9.1" L
Powerbond Construction Options:	Powerbond® Cushion	Powerbond® Cushion
Modular Construction Options:	ER3® Modular, ethos® Modular with Omniccoat Technology™, Flex-Aire Modular® Cushion	ER3® Modular, ethos® Modular with Omniccoat Technology™, Flex-Aire Modular® Cushion

Modular Installation Options:



CONSTRUCTION OPTIONS

Through our ReStart® program, we ensure 100% of the flooring and samples returned are recycled or reused, guaranteed.

	Backing Systems	Lifetime Limited Warranty	Rollability	100% Closed-Loop Recyclable	Seams	Moisture Management	Installation	Recycled Content
POWERBOND	Powerbond® Cushion	•	Good	•	Impermeable	Impact 0 @ 10,000	Peel & Stick Direct Glue	•
	ER3®	•	Excellent	•			Peel & Stick Direct Glue	•
	ethos®	•	Excellent	•			TarkettTAPE™ Direct Glue	•
MODULAR	Flex-Aire™	•	Good	•			TarkettTAPE™ Peel & Stick Direct Glue	•

Rollability is the ability to move (or roll) pieces of furniture such as chairs or beds on flooring. Moisture penetration by impact at seams @10psi: No penetration after 10,000 impacts Impermeable seams



ReStart® includes Tarkett's third-party certified reclamation and recycling program that reclaims and recycles post-consumer flooring, installation waste, samples and portfolios. To initiate ReStart, contact customer service at 800.248.2878.

Product	Recycled Content*		NSF 140 SCS Rating	Cradle to Cradle Certified™ v3.1**
	Overall	Post-consumer		
CERTIFIED ER3® Modular	45-66%	14%	Platinum	
CERTIFIED ethos® Modular with Omniccoat Technology™	47-75%	28%	Platinum	Silver
CERTIFIED Powerbond® Cushion	7-33%	7%	Gold	
CERTIFIED Flex-Aire™ Cushion Modular	21-41%	4%	Gold	

*Minimum recycled content certified by Scientific Certification Systems (SCS) and varies by product style.
**Cradle to Cradle Certified is a certification mark licensed by the Cradle to Cradle Products Innovation Institute.

For a detailed analysis of how Tandus Centiva products perform in environmental rating systems such as LEED, please visit our ecoScorecard at tandus-centiva.org/greenproducts.com.

All vinyl products, when recovered, are 100% recyclable in Tarkett's closed-loop recycling process.



Tandus Centiva offers Environmental Product Declarations (EPD) for the following: ethos Modular, ER3 Modular, Flex-Aire Cushion Modular, and Powerbond Cushion.

ON THE COVER:

AIRSPACE 11352
Stealth Green 60908
Powerbond installation
FLIGHTPATH 11353
Stealth 60903
Powerbond installation

Tarkett North America

30000 Aurora Road
Solon, Ohio 44139
800.248.2878

tarkettna.com

©2018 Tarkett North America

11/2018