

Starfloor Click 30 & 55

LUXURY VINYL TILES

Your
decoration
in one click



Starfloor Click collection is a durable choice available in two constructions: Starfloor Click 30 (4mm/0.30mm wearlayer) for Residential or Light Commercial use and Starfloor Click 55 (5mm/0.55mm wearlayer) for Heavy Commercial use. If you're looking for a simple yet durable solution, for a small or bigger interior design project, Starfloor Click collection is what you need.

This range brings choice, style and simplicity to your project, giving your unique taste and imagination a place to bloom.



A SUSTAINABLE solution

Through our Tarkett Human-Conscious Design® approach, we develop flooring that helps people flourish in their every day without compromising on health and the environment. With 90% of time spent indoors, clear air matters. Our LVT collections showcase ultra low VOC emissions, less than 100µg / m³ TVOC after 28 days. Our LVT is also phthalate-free. It contributes to healthier spaces and helps you reach green building certifications like WELL and LEED.



Black Cement

YOUR DECORATION CLICKS INTO PLACE A NEW LOOK INSTALLED SIMPLY & SWIFTLY

BEST OPTION For Renovation

Starfloor Click is equipped with an easy-to-handle locking system that requires no specific tools. It is a glueless floating installation: the floor can be used right away.

Starfloor Click requires very little subfloor preparation and does not damage existing floor, making it the perfect floor for renovation!

The robust click system keeps the planks sealed and steady.

HIGH RESISTANCE To Traffic

Durable choice available in two constructions: Starfloor Click 30 (4mm with 0.30mm wearlayer) and Starfloor Click 55 (5mm with 0.55mm wearlayer). Acoustic properties to keep noise to a minimum.

RECREATE The Realism

Thanks to a 100% matte finish, our product resembles to the original material.

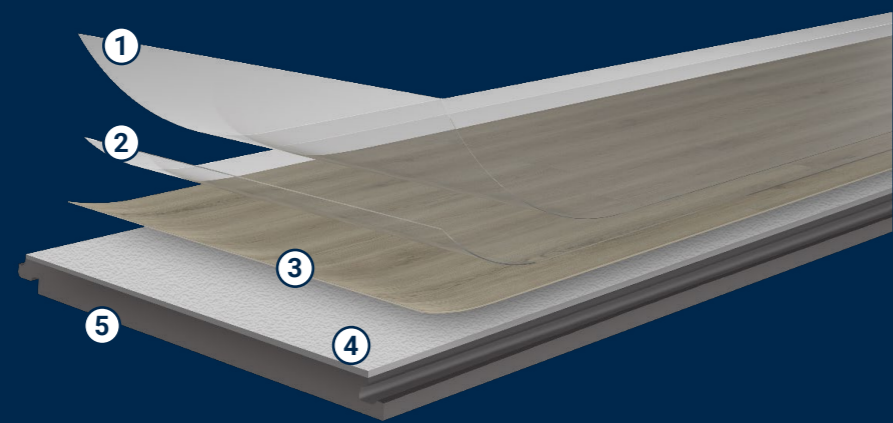
2 patterns and 5 different colours are available with embossing in register. This technique is used to create a precise texture that enhances a wood design. The surface is carved to match the natural essence of the wood, but unlike real wood, the surface interior does not absorb water and dirt and can be easily cleaned.

DURABLE Resistance and EASY Cleaning

Hygienic surface treated with the Tarkett unique TopClean coating that strengthens it, extends the life-cycle and simplifies cleaning and maintenance, reducing the need for water, energy and chemical detergents.

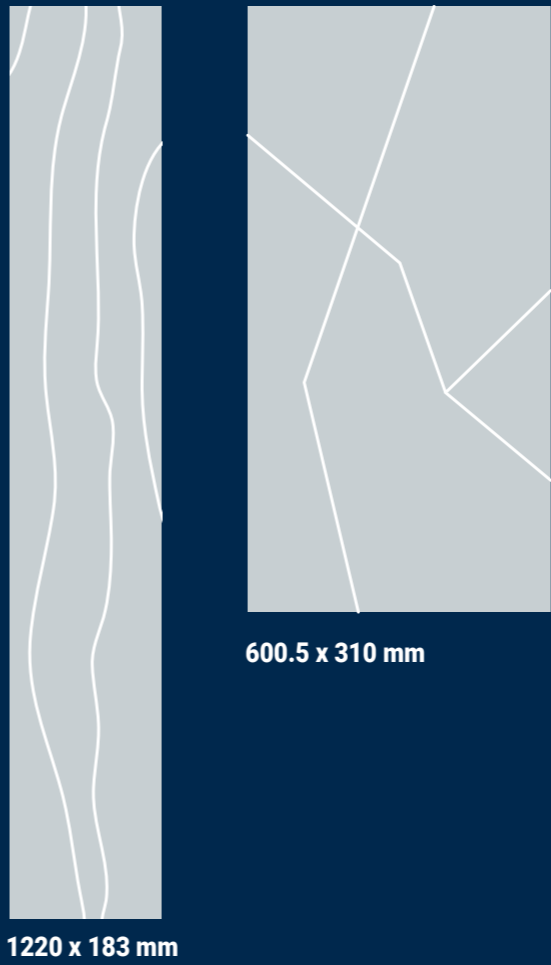
GLUE DOWN LUXURY VINYL TILE

THE SIMPLE & RESISTANT SOLUTION



Formats

2 standard formats



①
**Reinforced Polyurethane (PUR)
Treatment Layer**
simple and easy maintenance

②
Transparent wear layer
high durability

③
Printed design layer
many design possibilities

④
PVC Core layer
dimensional stability and
resistance

⑤
Angle-to-angle click system
ease of installation

Available in 4mm and 5mm
constructions

CHARM OAK



Beige EIR Cold Grey EIR Snow EIR

COUNTRY OAK



Light Beige EIR Natural EIR

CERUSED OAK



Beige

DELICATE OAK



Beige Brown Light Beige Light Brown

MODERN OAK



Beige Brown Light Beige Light Brown Natural White

SCANDINAVE WOOD



Beige White

SOFT OAK



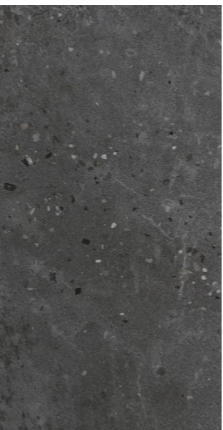
Beige Brown Light Beige Light Brown Light Grey Natural

TEAK

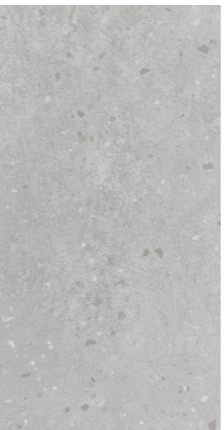


Natural

BRECCIA

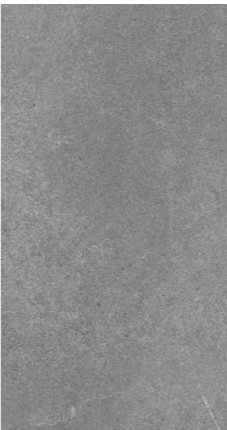


Black



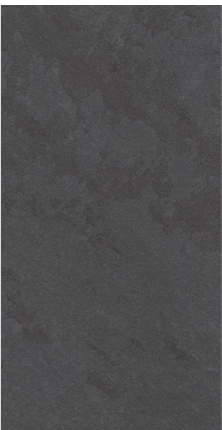
Light Grey

CEMENT



Grey

BLACK CEMENT



MARBLE



Classic

RETRO



Black White Indigo Orange Blue

SCRATCHED METAL



Grey

VENEZIA



Grey

SLATE



Anthracite



Grey

STONEART



Medium Grey

TERRAZZO



Classic



Natural

CHARM OAK

The Charm Oak is a classic and charming limed wood. Its embossed in register surface brings extra authenticity and its delicate style adds softness and wellness in interiors.

Dimensions:
1220 x 183 mm



Charm Oak Beige EIR




Charm Oak Cold Grey EIR




Charm Oak Snow EIR




Charm Oak Beige EIR

A large rectangular sample of wood-look flooring with a light beige and tan color palette. The grain is vertical, showing natural wood textures and knots. The planks are arranged in a staggered pattern.

CHARM OAK BEIGE EIR
Starfloor Click 30 36002005
Starfloor Click 55 36030001

A large rectangular sample of wood-look flooring with a grey and blue-grey color palette. The grain is vertical, showing natural wood textures and knots. The planks are arranged in a staggered pattern.

CHARM OAK COLD GREY EIR
Starfloor Click 30 36002004
Starfloor Click 55 36030004

A large rectangular sample of wood-look flooring with a light grey and off-white color palette. The grain is vertical, showing natural wood textures and knots. The planks are arranged in a staggered pattern.

CHARM OAK SNOW EIR
Starfloor Click 30 36002003
Starfloor Click 55 36030005

COUNTRY OAK

The Country Oak, with its registered embossing, is a traditional and classic wood. Its timeless elegance is reassuring.

Dimensions:
1220 x 183 mm



Country Oak Light Beige EIR



Country Oak Natural EIR



Country Oak Natural EIR

COUNTRY OAK LIGHT BEIGE EIR
Starfloor Click 30 36002002
Starfloor Click 55 36030002

COUNTRY OAK NATURAL EIR
Starfloor Click 30 36002010
Starfloor Click 55 36030010



CERUSED OAK

The Cerused Oak is a trendy lightwood. The variations of colors in the planks play with the contrasts and create a realistic effect. This design offers a lively range of colors and structures.

Cerused Oak Beige
Starfloor Click 30 35998005
Starfloor Click 55 36029004

Dimensions:
1220 x 183 mm



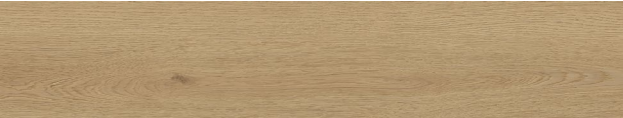
DELICATE OAK

Classic pattern which is as timeless as the colour range, fitting every demand and lifestyle. The natural surface structure provides a natural feel and touch and is adding serenity to every interior.

Dimensions:
1220 x 183 mm



Delicate Oak Light Brown



Delicate Oak Beige



Delicate Oak Brown



Delicate Oak Light Beige



Delicate Oak Beige

DELICATE OAK LIGHT BROWN
Starfloor Click 30 35998026
Starfloor Click 55 36029026

DELICATE OAK BEIGE
Starfloor Click 30 35998027
Starfloor Click 55 36029027

DELICATE OAK BROWN
Starfloor Click 30 35998028
Starfloor Click 55 36029028

DELICATE OAK LIGHT BEIGE
Starfloor Click 30 35998029
Starfloor Click 55 36029029

MODERN OAK

This flooring feels like a good friend: always there but never intrusive. The well-balanced design is coming in six coordinated colour shades to match every interior style. A perfect starting point to create exciting ambiances based on a timeless but contemporary design.

Dimensions:
1220 x 183 mm



Modern Oak Brown

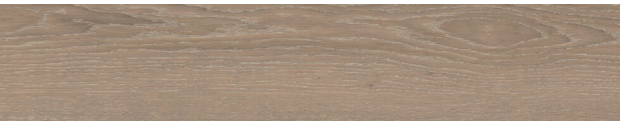
Modern Oak White



Modern Oak Light Beige



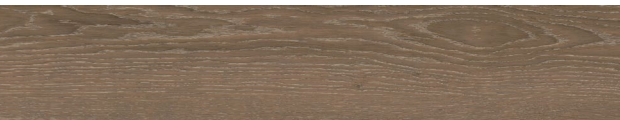
Modern Oak Beige



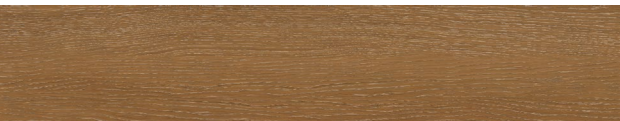
Modern Oak Light Brown



Modern Oak Brown



Modern Oak Natural



MODERN OAK WHITE
Starfloor Click 30 35998030
Starfloor Click 55 36029030

MODERN OAK LIGHT BEIGE
Starfloor Click 30 35998031
Starfloor Click 55 36029031

MODERN OAK BEIGE
Starfloor Click 30 35998032
Starfloor Click 55 36029032

MODERN OAK LIGHT BROWN
Starfloor Click 30 35998033
Starfloor Click 55 36029033

MODERN OAK BROWN
Starfloor Click 30 35998034
Starfloor Click 55 36029034

MODERN OAK NATURAL
Starfloor Click 30 35998035
Starfloor Click 55 36029035

SCANDINAVE WOOD

The Scandinavian style plays with the omnipresence of white in combination with clean lines and soft materials. It creates a sense of warmth, light and wellbeing.

Dimensions:
1220 x 183 mm



Scandinave Wood Beige



Scandinave Wood White



Scandinave Wood White

SCANDINAVE WOOD BEIGE
Starfloor Click 30 35998012
Starfloor Click 55 36029002

SCANDINAVE WOOD WHITE
Starfloor Click 30 35998013
Starfloor Click 55 36029007

SOFT OAK

Soft Oak is a very elegant and appealing wood design inspired by the distinctive knots, grain and texture of oak for a beautiful organic feel.

Dimensions:
1220 x 183 mm

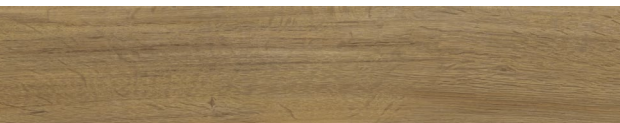


Soft Oak Natural

Soft Oak Brown



Soft Oak Natural



Soft Oak Beige



Soft Oak Light Grey



Soft Oak light Brown



Soft Oak Light Beige



SOFT OAK BROWN

Starfloor Click 30 35998021

Starfloor Click 55 36029021



SOFT OAK BEIGE

Starfloor Click 30 35998018

Starfloor Click 55 36029009



SOFT OAK NATURAL
Starfloor Click 30 35998011
Starfloor Click 55 36029001

SOFT OAK LIGHT GREY
Starfloor Click 30 35998020
Starfloor Click 55 36029011

SOFT OAK LIGHT BROWN
Starfloor Click 30 35998019
Starfloor Click 55 36029010

SOFT OAK LIGHT BEIGE
Starfloor Click 30 35998023
Starfloor Click 55 36029008

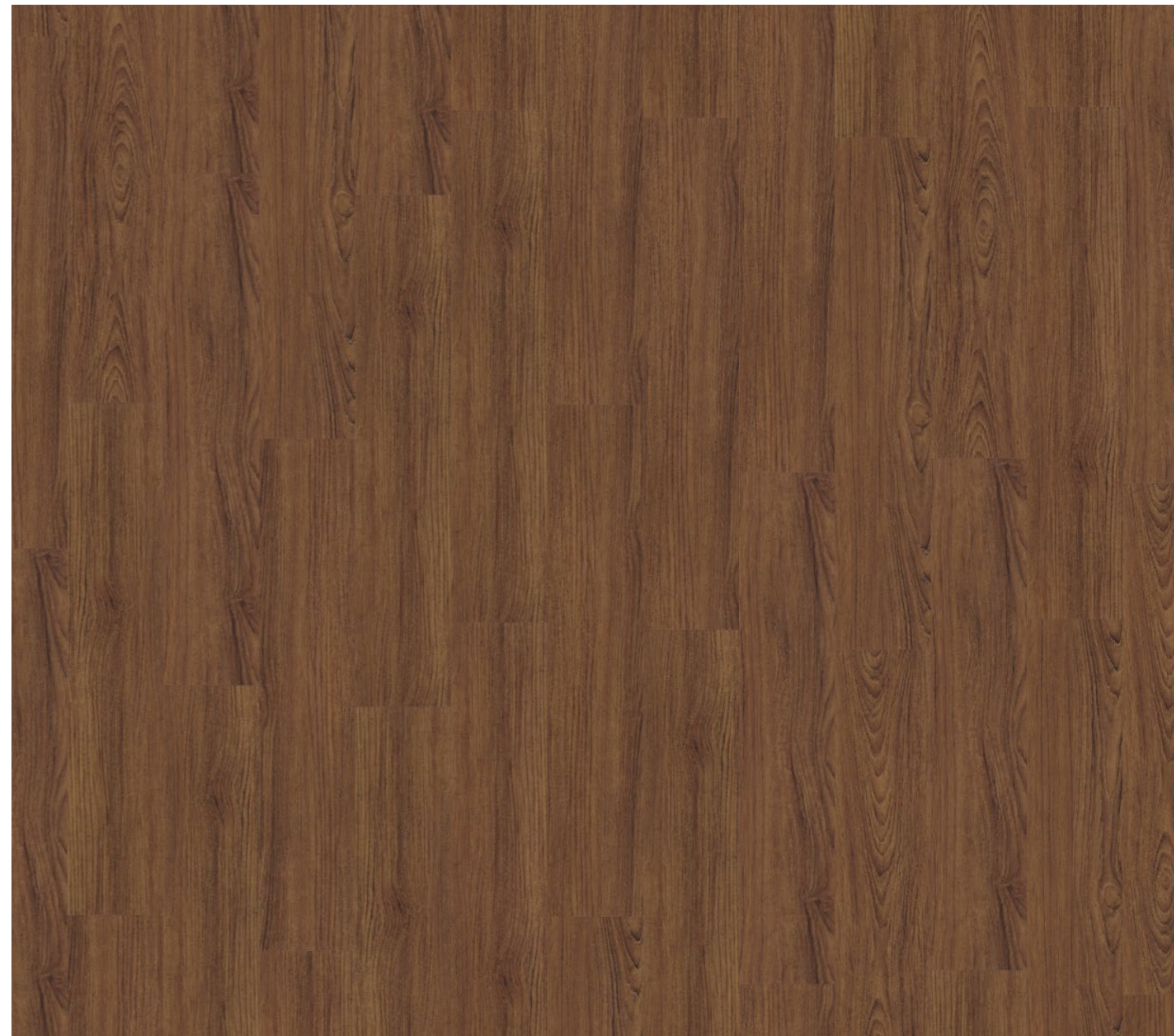


TEAK

The Teak adds a warm and exotic touch.

Teak Natural
Starfloor Click 30 35998009
Starfloor Click 55 36029005

Dimensions:
1220 x 183 mm



BRECCIA

This timeless classic in cold grey and black colours transforms a centuriesold style of flooring into contemporary design.

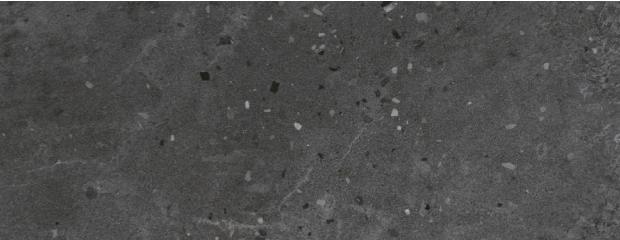
Dimensions:
600.5 X 310 mm



Breccia Light Grey



Breccia Black



Breccia Light Grey

BRECCIA LIGHT GREY
Starfloor Click 30 36001018
Starfloor Click 55 36028018



BRECCIA BLACK
Starfloor Click 30 36001019
Starfloor Click 55 36028019



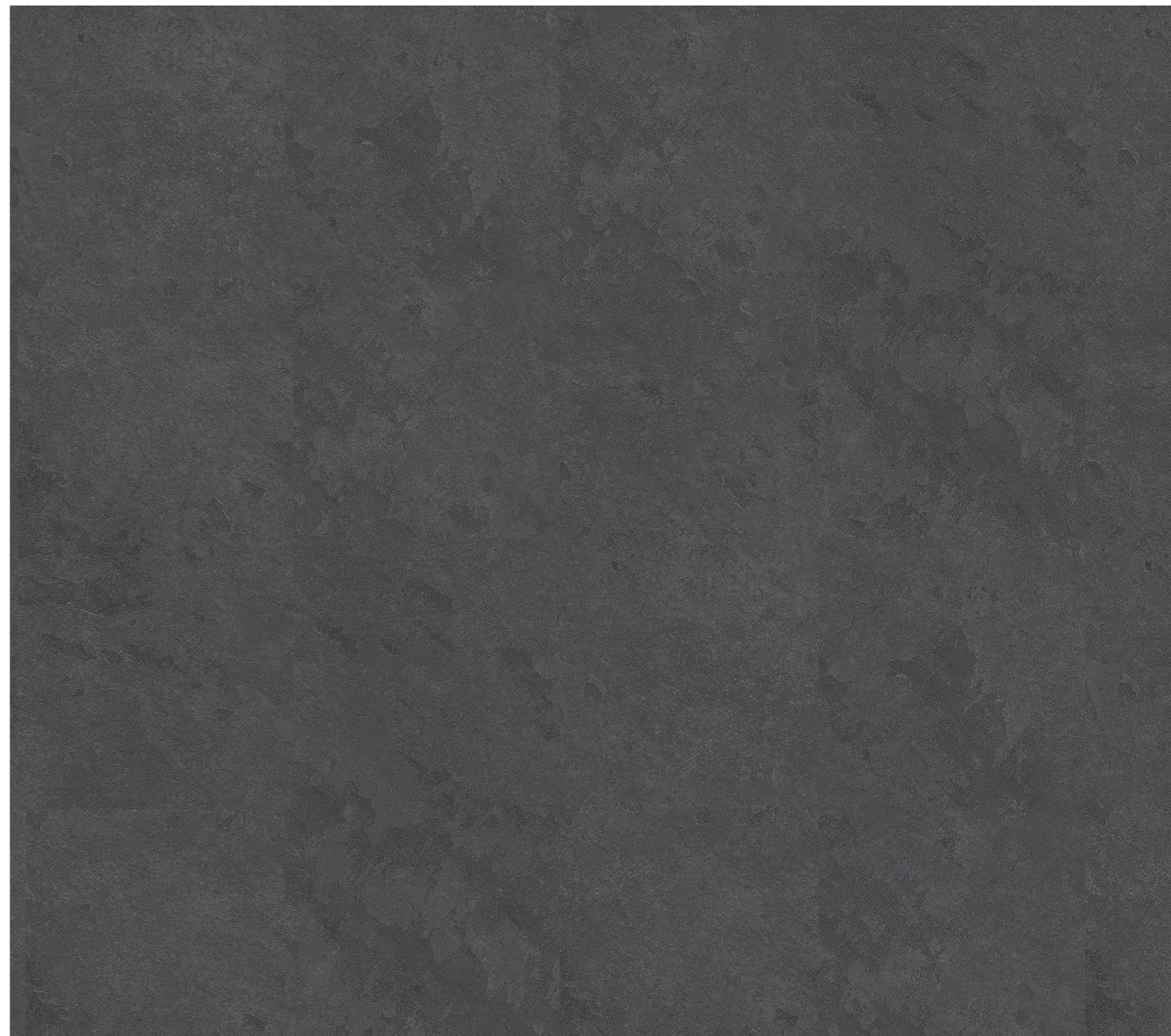


BLACK CEMENT

A modern and stylish flooring option characterized by its minimalist appearance. It can create a dramatic and sophisticated look in any space.

Black Cement
Starfloor Click 30 36001009
Starfloor Click 55 36028007

Dimensions:
600.5 X 310 mm



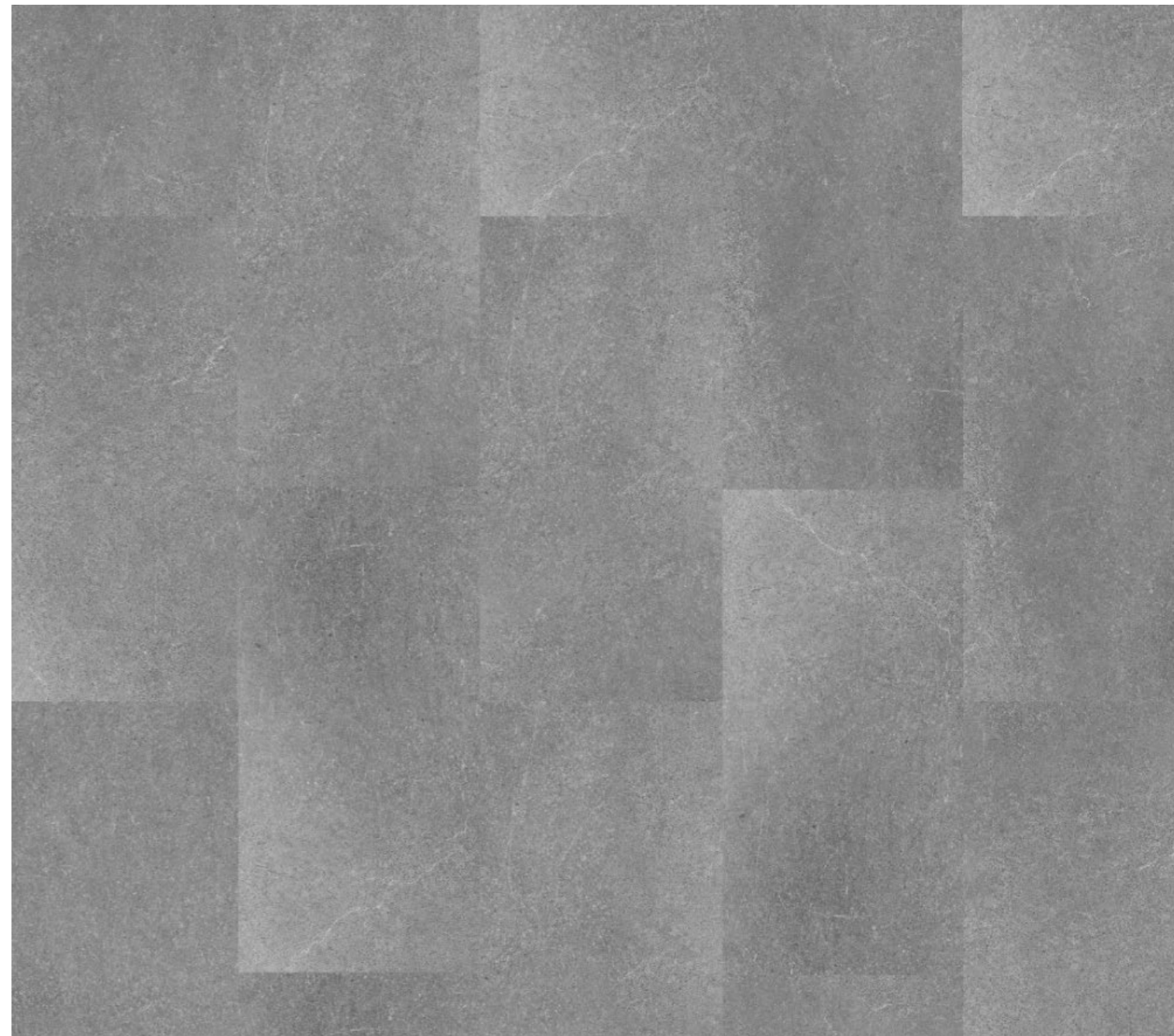


CEMENT

Cement has a polished-concrete design with subtle patterns in a warm black colour. The cement design gives to the tile a nice finishing and industrial touch.

Cement Grey
Starfloor Click 30 36001016
Starfloor Click 55 36028016

Dimensions:
600.5 X 310 mm





MARBLE

The most classic marble in an allover designs.

Marble Classic
Starfloor Click 30 36001017
Starfloor Click 55 36028017

Dimensions:
600.5 X 310 mm



RETRO

The Retro is a patchwork of vintage cement tiles. It follows the trend bymixing the traditional patterns. It adds a bohemian and creative style.

Dimensions:
600.5 X 310 mm



Retro Black White



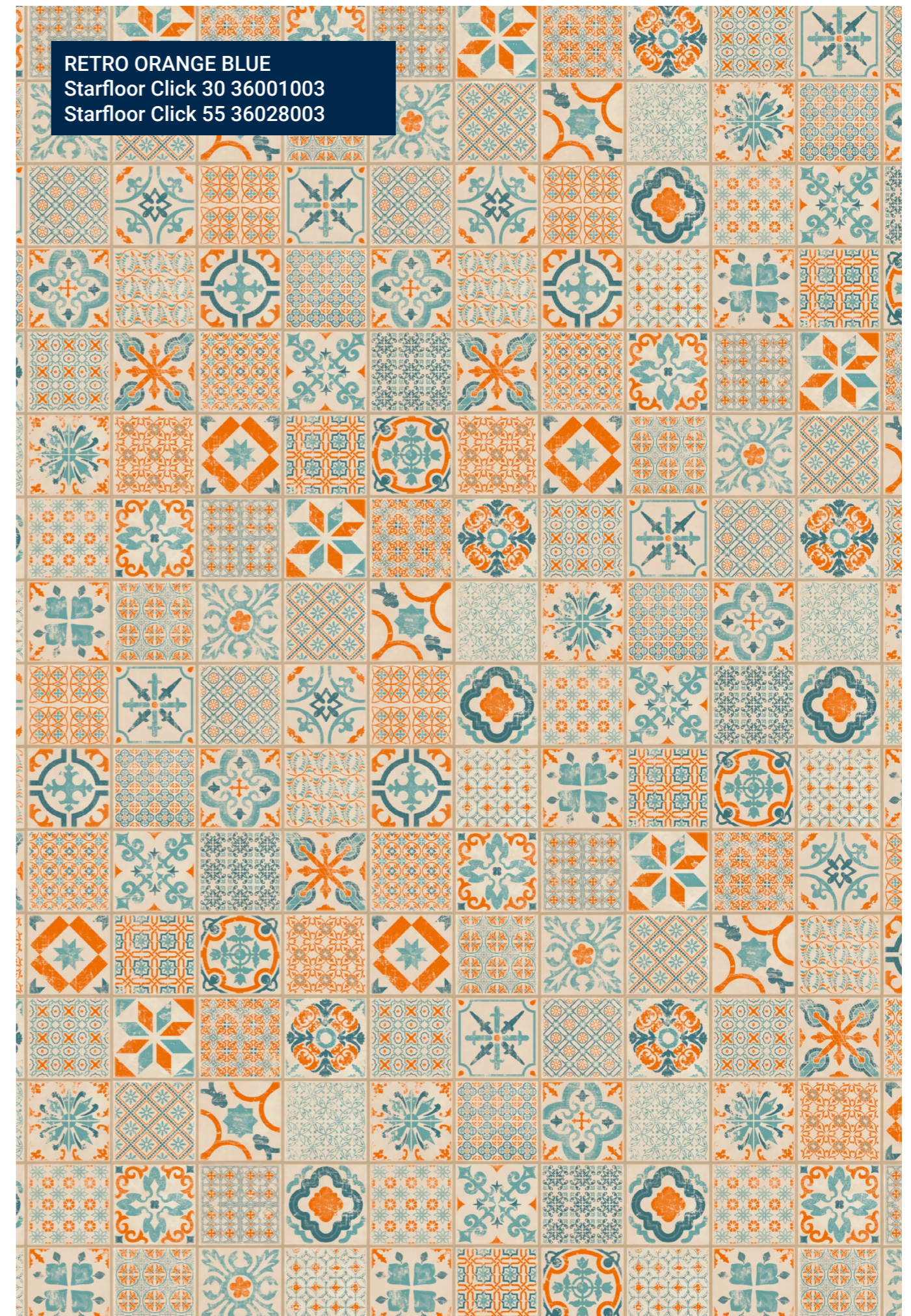
Retro Indigo



Retro Orange Blue



Retro Orange Blue



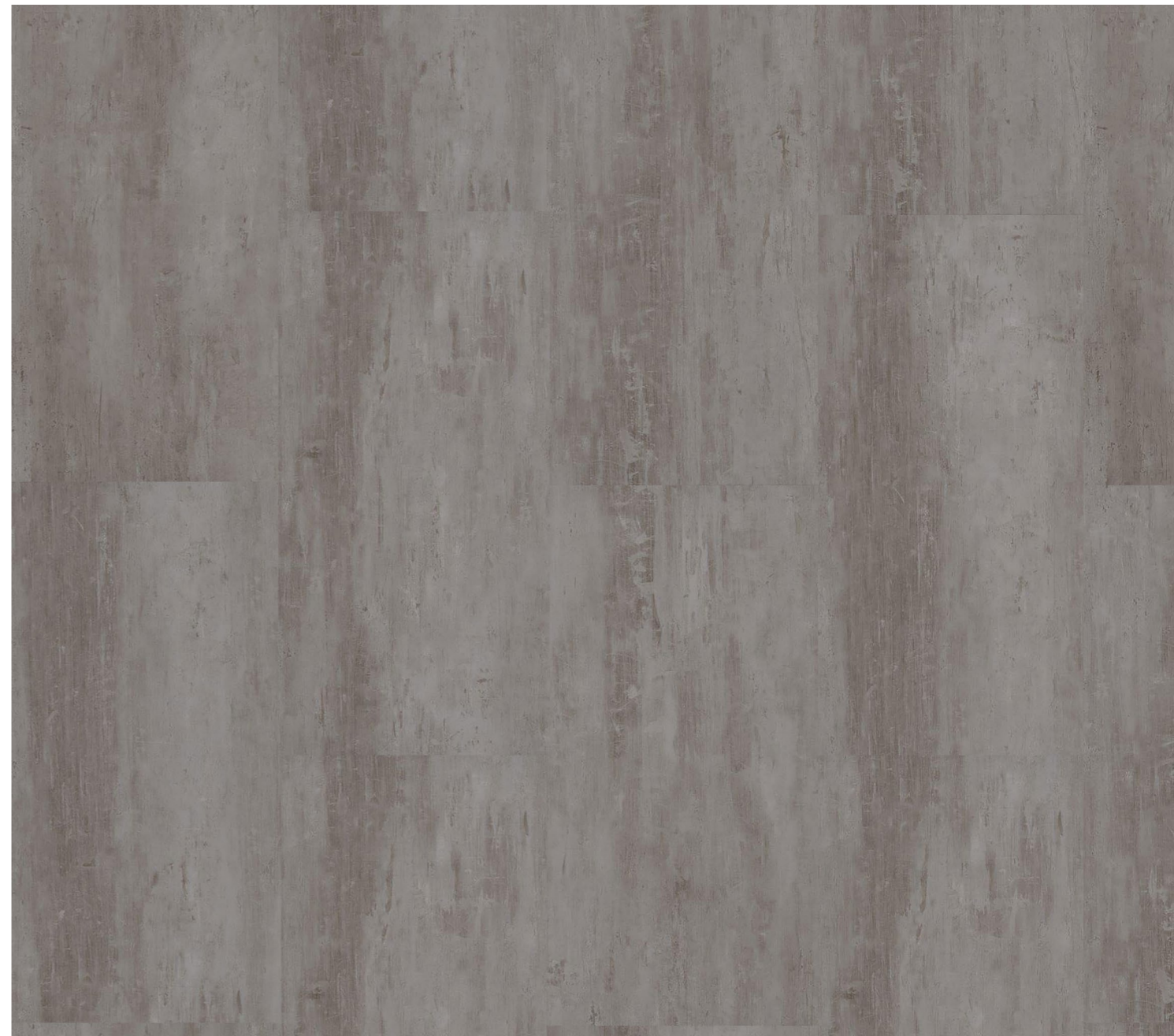


SCRATCHED METAL

The trends like to rewrite histories by mixing the styles and recycled objects and materials. The Scratched Metal, old looking metal, with cracks and patinas is inspired by the industrial style.

Scratched Metal Grey
Starfloor Click 30 36001013
Starfloor Click 55 36028013

Dimensions:
600.5 X 310 mm



SLATE

The Slate is an authentic and natural stone. It creates a traditional ambiance in your interior.

Dimensions:
600.5 X 310 mm



Slate Anthracite



Slate Grey



Slate Grey

SLATE ANTHRACITE

Starfloor Click 30 36001014

Starfloor Click 55 36028014

SLATE GREY

Starfloor Click 30 36001015

Starfloor Click 55 36028015



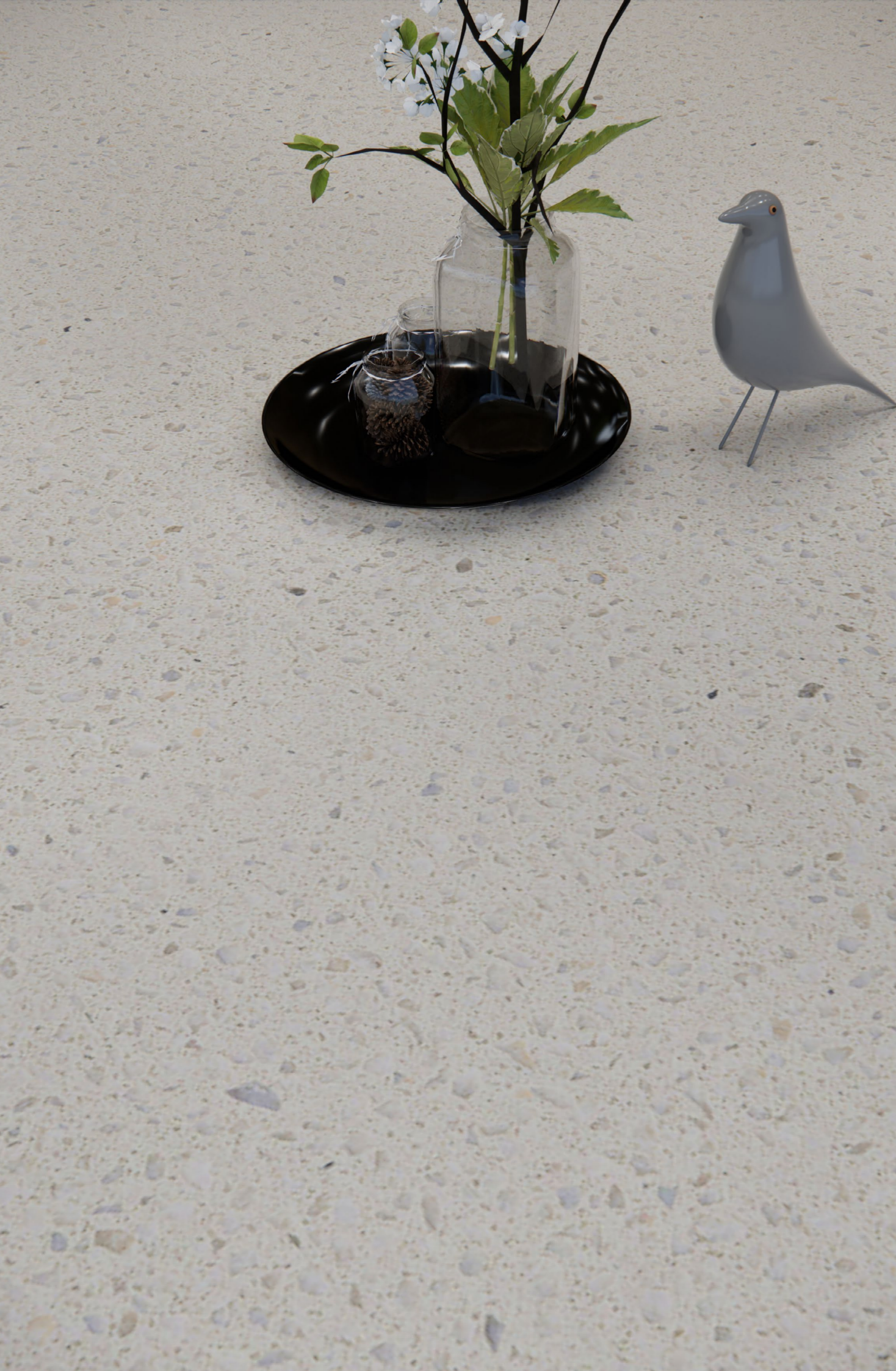
STONEART

This design based on a concrete background is using the same overprint pattern.

Stoneart Medium Grey
Starfloor Click 30 36001020
Starfloor Click 55 36028020

Dimensions:
600.5 X 310 mm



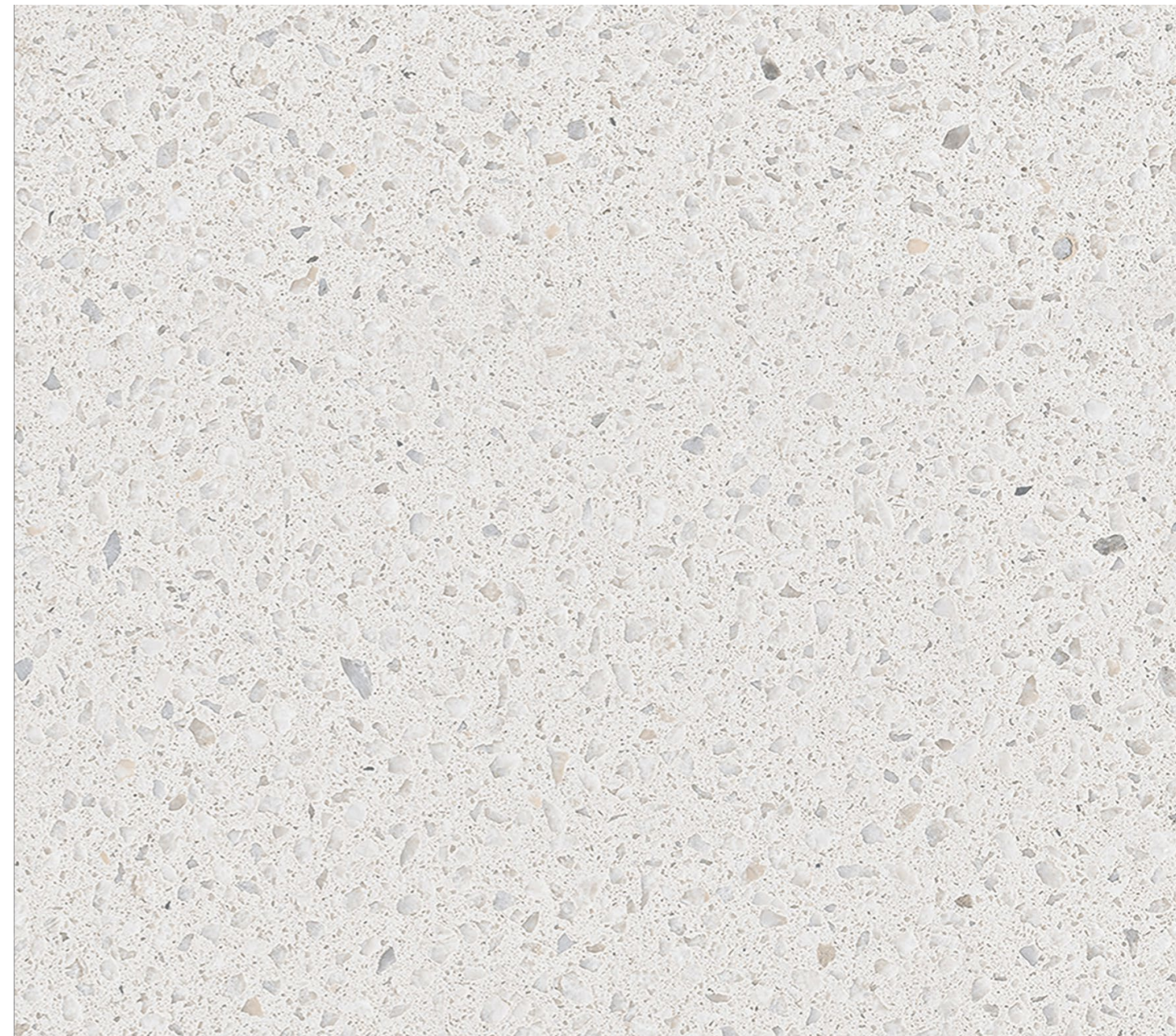


TERRAZZO

Classic Terrazzo pattern by giving a natural, organic look.

Terrazzo Classic
Starfloor Click 30 36001021
Starfloor Click 55 36028021

Dimensions:
600.5 X 310 mm



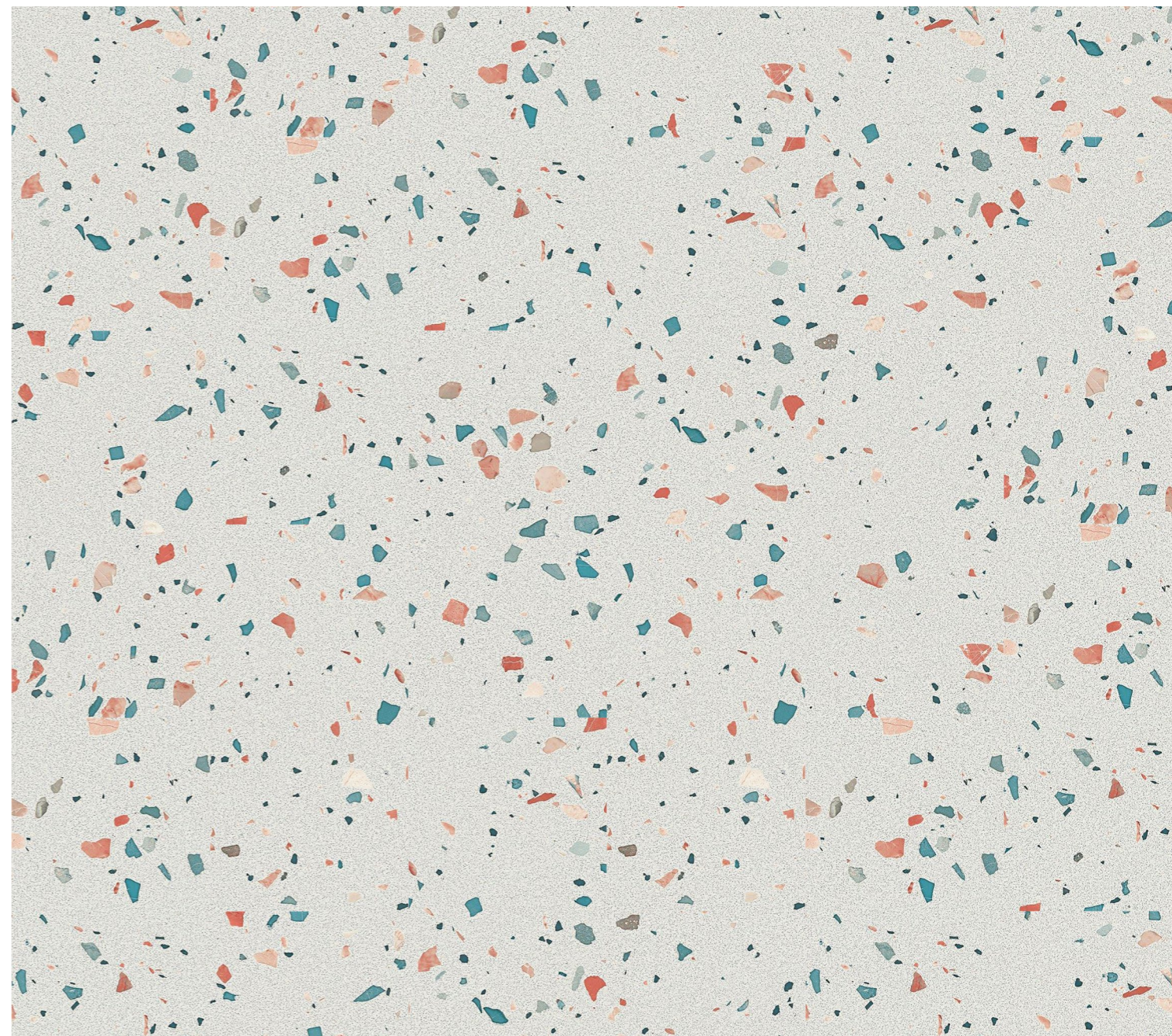


TERRAZZO

Terrazzo is now everywhere! We see it on the floors and ceilings, and all types of accessories. It can be playful, somber or rustic and can be found anywhere in the house. This look has been designed very delicately in order create a simple and soft result. Its multicolored surface can be paired with any other flooring.

Terrazzo Natural
Starfloor Click 30 36001008
Starfloor Click 55 36028006

Dimensions:
600.5 X 310 mm





VENEZIA

This design based on a concrete background is using the same overprint pattern.

Venezia Grey
Starfloor Click 30 36001012
Starfloor Click 55 36028005

Dimensions:
600.5 X 310 mm





Installation Instructions

USE

USAGE

Starfloor Click Collection offers two constructions for indoor use.

Starfloor Click 30 for **Residential** or **Light commercial** use and Starfloor Click 55 for **Heavy Commercial use**.

Both ranges are resilient flooring, durable, practical and easy to clean and install.

ACCLIMATISATION

Starfloor Click 30-55 should be acclimatised for at least 24 hours in the rooms where it is to be installed according to the conditions detailed below.

ROOM TEMPERATURE CONDITIONS

Starfloor Click 30-55 should be installed at room temperature, between 15°C and 25°C. The temperature of the subfloor on which the product is to be installed must not be less than 15°C.

IMPORTANT INFORMATION PRIOR TO INSTALLATION

TOOLS FOR THE INSTALLATION

- Knife with straight blade
- Protective gloves
- Folding rule/measuring tape
- Pencil/T-square
- Spacers

EXAMINATION OF THE GOODS

Check the quality of the goods supplied before proceeding with the preparation work. Claims cannot be made on goods that have been cut to size or laid. The installation must be done using the same production batch in order to guarantee the uniformity of colour and design.

PERMITTED SUBFLOORS

- Laminate/parquet
 - Even stone floors, marble, ashlar
 - Ceramic tiles
- (seam requirements: < 5 mm wide/< 2 mm deep)
- Compact PVC coverings
 - Even floor screeds: new or reworked

The warranty of the product is invalid when unapproved subfloors are used.

SUBFLOOR CONDITION

Prepare the surface according to the standards in force in your country. The surface must be level, firm and not exposed to rising humidity. The maximum flatness tolerance is 3mm under 2m metal ruler. Textile and needle felt floor coverings must be removed. In principle, it is recommended that all floor coverings are removed. We advise not proceeding with the installation of Starfloor Click 30-55 in the event of:

- Significant uneven areas (in excess of standards of flatness applied in the countries concerned),
- Cracks in the subfloor,
- Subfloor insufficiently dry,
- Surface insufficiently firm, too porous or too rough,
- Surface contaminated, e.g. by oil, wax, varnish or paint residue,
- Difference in level between the subfloor and other structural elements,
- Unsuitable subfloor temperature (below 15°C),
- Room temperatures lower than 15°C or higher than 25°C,
- No heating protocole in case of underfloor heating system (Maximum temperature of 27°C during lifetime).

INSTALLATION

INSTALLATION OF TARKOMFORT PREMIUM OR TARKOMFORT PRO UNDERLAY

We highly recommend the use of Tarkomfort Premium or Tarkomfort Pro underlay on any kind of subfloor.

These underlays offer the following advantages:

- Even out minor irregularities of the surface, e.g. when installing on ceramic tiles, wooden floors, etc
- Improve footstep noise and noise transmission levels (19 dB for Tarkomfort Premium and 13 dB for Tarkomfort Pro),
- Increase underfoot comfort,
- Make the installation easier.

For more information about the underlay installation, check the installation instructions of the chosen product.

INSTALLATION DIRECTION

Always start the installation from left to right. In a room, install the panels so that the planks are in the direction of the light. In long, narrow rooms, such as corridors, Starfloor Click 30-55 can be installed in the direction of the room.

EXPANSION JOINT AND EDGE DISTANCES

Using a suitable spacer, create an expansion joint at least 5 mm wide along the entire periphery. TIP: Use flooring off-cuts as spacers. Also maintain a gap of 5 mm from all fixtures in the room, such as pipes, door frames etc. In principle, this expansion joint must not be filled with silicone, electric cables or other items.

THE USE OF SILICONE IS PERMITTED IN THE FOLLOWING EXCEPTIONAL CASES

• Damp rooms:

Edge joints in damp rooms of max. 10 m², e.g. bathrooms or kitchens, may be made with silicone in order to avoid any infiltration of water through the expansion joint and onto the installed surface. For all larger areas in damp rooms, we recommend starting by applying insulating tape to the area of the joint before filling it with a quantity of silicone and/or using a skirting board with a sealing lip.

• Door frames:

If the door frames cannot be shortened, we recommend a 3mm gap for the expansion joint, which can be filled with silicone. If the frames can be shortened, make sure that there is a 5mm expansion joint in relation to the wall.

INSTALLATION

Place 5mm spacers between the wall and the 1st row of planks. Place the 1st plank in the left hand corner. Make sure the tongues are visible (identified in green and blue in the drawing). Place the second plank by inserting it in the groove (in blue in the drawing) of the 1st plank. Be careful not to damage the corners of the planks. Continue in the same way up to the wall. If the last plank is too long, make a cut by scribing method (taking into account the expansion gap) and place the cut plank to complete the row. Then you can start the second row. The 1st plank of the second row should be smaller than the 1st plank of the 1st row to create a staggered installation. To do so use the rest of the cut last plank of the 1st row or use a new plank which you should cut so that it is smaller than the 1st plank, but no shorter than 30cm. It's also important that the distance between the 2 short ends (blue in the drawing) is at least of 30cm. Once you have installed the 1st plank of the second row, you should assemble the following planks by always starting with their short end tongue (in blue in the drawing). Before inserting the plank in the long side groove (in green in the drawing), slightly raise both planks before pushing them down together. Follow the next steps: slightly raise the short end of the plank (blue part), insert the second plank in the short end groove of the first plank (blue), Insert the tongues of the second plank in the groove of the plank of the first row. You will need to raise slightly the first plank to do so and in order to complete the installation, you will need to push the planks to the floor to lock them. Proceed in the same way to complete the room till the opposite wall. When you come to the last row and the planks are too wide to be installed completely (in full), you have to make a cut by scribing method (taking into account the expansion gap).

Once the installation of the flooring is completed, use a skirting to cover the expansion gap and to obtain a perfect finish. For a perfect aesthetic result, we recommend the use of Tarkett matching accessories.

EXPANSION PROFILES WITHIN THE AREA

Rooms with an uninterrupted area of 150 m² may benefit from a joint-free installation, taking into account twice the expansion gap (approximately 10 mm). Do not exceed a length of approximately 15m. Expansion profiles have to be used in rooms that are extremely long and narrow. Room areas interrupted by vertical elements (columns, walls, door frames, etc.) must be divided using expansion joints of at least 5 mm at the same level as these elements. When installing skirting boards, transition profiles or end profiles, the skirting boards or profiles must never be fixed to the floor covering. Contact your Tarkett representative if you would like more information on this.

IMPORTANT INFORMATION ON COMPETING THE INSTALLATION

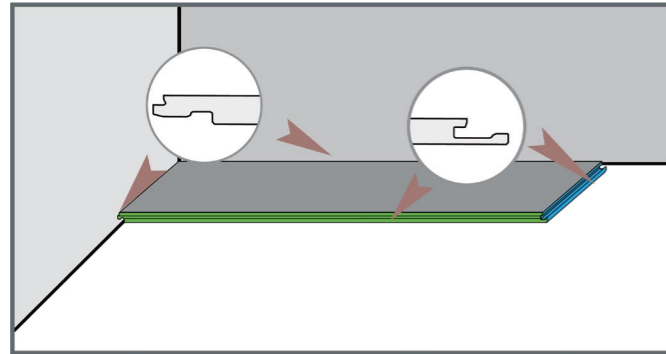
- Remove all of the spacers.
- Starfloor Click 30-55 must never be fixed to the subfloor, underlay, furniture or other fixtures.
- The appropriate use of anti-dirt areas and mats greatly reduces dirt deposits. Please use sliders suitable for hard floors if mobile furniture is used. Please provide office chairs and other wheeled equipment with W type castors.
- We recommend the application of a protective coat of TarkoProtect before the finished floor is used.

PARTICULARITIES AND EXCEPTIONAL SITUATIONS

- In conservatories, verandas and winter garden behind large windows or where there is significant light exposure, the use of Starfloor Click 30-55 may prove critical because of extreme variations in temperature and is therefore not recommended.
- Variations of temperature allowed after installation from 10°C to 28°C, keep those temperature during full life cycle of the LVT Click and minimize those temperature variations. Below or above, the flooring should be glued dow (see the list of recommended adhesives for LVT available on internet).
- The areas close to glass window, picture window, roof window, chimney... should be glued down (see the list of recommended adhesives for LVT available on internet).
- Dyed rubber-based wheels and castors (e.g. vehicle tyres, pneumatic tyres) may cause irreversible colour changes in cases of direct interaction and contact with vinyl surfaces

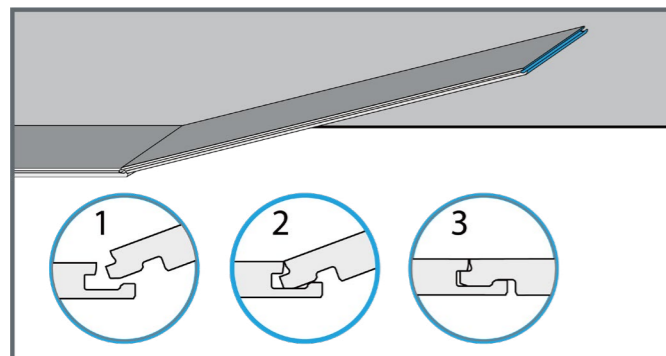
STEP 1

Preparation. Basic tools. Planks should be stored flat in the desired room, at least 24 hours prior to installation and at min.15°C. The subfloor must be dust free, clean, hard and dry. Begin the installation along the wall. Always install the planks from left to right.



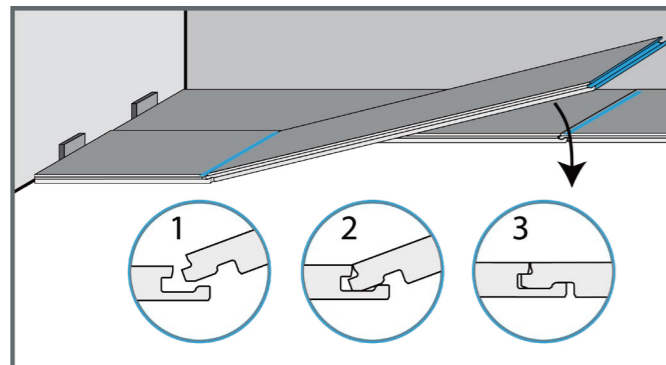
STEP 2

Install the second plank in the row by angling the end tongue into the end groove of the first plank. Be careful not to bend the corner of the plank.



STEP 3

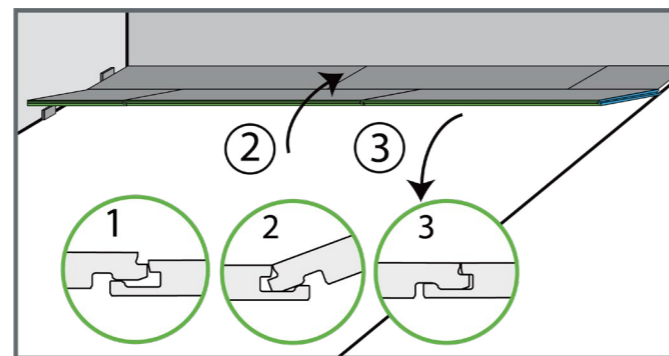
Start the second row by cutting a plank to the desired length. Keep in mind that the plank must not be shorter than 30 cm for an optimum look and overall stability. Install the first plank in the second row by inserting the long side tongue into the groove of the plank in the first row. Install the second plank in the second row by inserting the short end tongue into the previously installed plank groove.



STEP 4

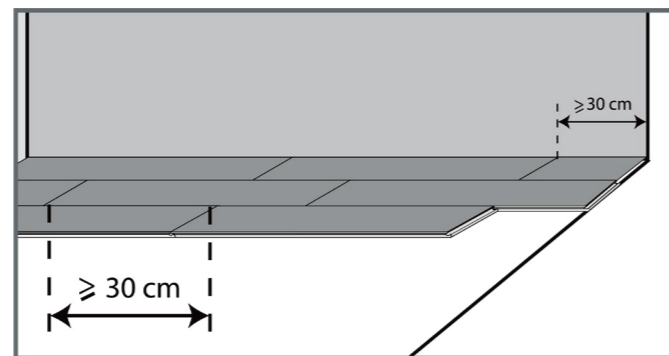
Once the short ends are locked, the long ends need to be locked in the 1st row:

- 1) the planks are sitting on the groove of the 1st row.
- 2) raise the 2nd row to insert it in the groove of the 1st row.
- 3) lower the full row: it's locked!



STEP 5

Proceed this way for all the rows to complete the room, making sure no plank is shorter than 30 cm and that you create a scale effects between the rows.



Installation Instructions

Cleaning & maintenance instructions

CLEANING AND MAINTENANCE

Give the floor a final clean after installation. The floor can be maintained by sweeping, vacuuming or mopping. Use a brush and a pH-neutral detergent to remove stubborn dirt. All aggressive and staining substances must be removed from the surface immediately.

REPAIR / REPLACE “STARFLOOR CLICK 30-55”

In the unlikely case that you should replace a damaged plank,

To replace a damage plank, cut around the plank (following the join) with a cutter. Remove the damaged plank. Then take a new plank and cut its groove and tongue. Before installing this plank, make sure you respect the design orientation. The replacing plank and the surrounding ones should be fixed to the subfloor using double-sided tape. Make sure you roll and press all these planks properly to ensure their good bonding to the floor.

Starfloor Click 30

Starfloor Click 55

LUXURY VINYL TILES

DESIGN	COLOR	FORMAT	STARFLOOR CLICK 30	STARFLOOR CLICK 55
Charm Oak (EIR)	Beige	1220 x 183 mm	36002005	36030001
	Cold Grey	1220 x 183 mm	36002004	36030004
	Snow	1220 x 183 mm	36002003	36030005
Country Oak (EIR)	Light Beige	1220 x 183 mm	36002002	36030002
	Natural	1220 x 183 mm	36002010	36030010
Cerused Oak	Beige	1220 x 183 mm	35998005	36029004
Delicate Oak	Beige	1220 x 183 mm	35998027	36029027
	Brown	1220 x 183 mm	35998028	36029028
	Light Beige	1220 x 183 mm	35998029	36029029
	Light Brown	1220 x 183 mm	35998026	36029026
Modern Oak	Beige	1220 x 183 mm	35998032	36029032
	Brown	1220 x 183 mm	35998034	36029034
	Light Beige	1220 x 183 mm	35998031	36029031
	Light Brown	1220 x 183 mm	35998033	36029033
	Natural	1220 x 183 mm	35998035	36029035
	White	1220 x 183 mm	35998030	36029030
Scandinave Wood	Beige	1220 x 183 mm	35998012	36029002
	White	1220 x 183 mm	35998013	36029007
Soft Oak	Beige	1220 x 183 mm	35998018	36029009
	Brown	1220 x 183 mm	35998021	36029021
	Light Beige	1220 x 183 mm	35998023	36029008
	Light Brown	1220 x 183 mm	35998019	36029010
	Light Grey	1220 x 183 mm	35998020	36029011
	Natural	1220 x 183 mm	35998011	36029001
Teak	Natural	1220 x 183 mm	35998009	36029005
Breccia	Black	600.5 x 310 mm	36001019	36028019
	Light Grey	600.5 x 310 mm	36001018	36028018
Black Cement	N/A	600.5 x 310 mm	36001009	36028007
Cement	Grey	600.5 x 310 mm	36001016	36028016
Marble	Classic	600.5 x 310 mm	36001017	36028017
Retro	Black White	600.5 x 310 mm	36001001	36028001
	Indigo	600.5 x 310 mm	36001002	36028002
	Orange Blue	600.5 x 310 mm	36001003	36028003
Scratched Metal	Grey	600.5 x 310 mm	36001013	36028013
Slate	Anthracite	600.5 x 310 mm	36001014	36028014
	Grey	600.5 x 310 mm	36001015	36028015
StoneArt	Medium Grey	600.5 x 310 mm	36001020	36028020
Terrazzo	Classic	600.5 x 310 mm	36001021	36028021
Terrazzo	Natural	600.5 x 310 mm	36001008	36028006
Venezia	Grey	600.5 x 310 mm	36001012	36028005

Starfloor Click 30

Starfloor Click 55

LUXURY VINYL TILES

TECHNICAL DATA	STANDARD	Starfloor Click 30	Starfloor Click 55
CLASSIFICATION			
Classification	EN ISO 10582	Heterogeneous PVC Compact floor covering	
	EN ISO 10874	Residential: 23 Commerical: 31	Residential: 23 Commerical: 33
Wear Layer binder content	EN ISO 10582	Type I	
TECHNICAL CHARACTERISTICS			
Total thickness	EN ISO 24346	4.00 mm	5.00 mm
Wear layer thickness	EN ISO 24340	0.30 mm	0.55 mm
Total weight	EN ISO 23997	7400 g/m²	9200 g/m²
Bevelled edges		Microbevels	
Embossing in register		Yes on EIR references	
Surface treatment (PUR)		Extreme®	
Form of delivery	EN ISO 24342 Planks	122 x 18.3 cm = 9 planks/box = 2.01m²	122 x 18.3 cm = 7 planks/box = 1.56 m²
	EN ISO 24342 Tiles	60.05 x 31 cm = 9 tiles/box = 1.68m²	60.05 x 31 cm = 9 tiles/box = 1.68m²
TECHNICAL PERFORMANCES			
Reaction to fire	EN 13501-1	Bfl-s1 loose laid on concrete and wood	
Electrostatic properties	EN 1815	< 2 kV on concrete	
	EN 1081	> 10 ⁹ Ohm	
Slip resistance	EN 13893	μ ≥ 0,30	
	DIN 51130	R9 / R10 depending on embossing	
Thermal resistance	EN ISO 10456	0.03 m2. K/W	0.04 m2. K/W
Dimensional stability	EN ISO 23999	≤ 0.10 %	
Impact sound reduction	EN ISO 717/2	ΔLw = 3 dB	
Residual Indentation	EN ISO 24343-1	≤ 0.08 mm	
Furniture leg	EN 424	No damage	
Castor chair	ISO 4918 (EN 425)	No damage	
Curl resultant to heat 6h at 80°C (mm)	EN ISO 23999	≤ 2.00 mm	
Underfloor heating		Suitable – max. 27°C	
Light fastness	EN ISO 105-B02	≥ 6	
Resistance to chemicals	EN ISO 26987	Good resistance	
ENVIRONMENTAL PERFORMANCES			
Total VOC emissions	ISO 16000-9	< 100µg/m³	
COLOURS			
		Wood: 25	
		Stone & Ceramic: 15	

The above information is subject to modification for the benefit of further improvement (02/2025).
For the latest information, please visit our website: www.Tarkett-asia.com
Tarkett's instructions regarding installation, cleaning and maintenance should be observed.



RECYCLABLE



PHthalate
FREE



≤ 100µg/m³
OPTIMAL INDOOR
AIR QUALITY

EXTREME
PROTECTION

EIR
EFFECT

20 years
GUARANTEE
RESIDENTIAL
USE

15 years
GUARANTEE
RESIDENTIAL
USE





www.tarkett-asia.com
Contact: saleshk@tarkett.com

