

Tandus Centiva

EVOKE

EVOKE A0001 Color: Smoke Embers 31902
24" x 24" Vertical Ashlar Installation



THE ULTIMATE
FLOORING EXPERIENCE

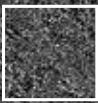


MODULAR

EVOKE A0001 Color: Millstone 31906
18" x 36" Herringbone Installation



Tandus Centiva



MODULAR

EVOKE A0001 Color: Smoke Embers 31902
24" x 24" Vertical Ashlar Installation



Tandus Centiva

PRODUCT COORDINATES - SOFT SURFACE



AVANT



CARTOGRAPHY

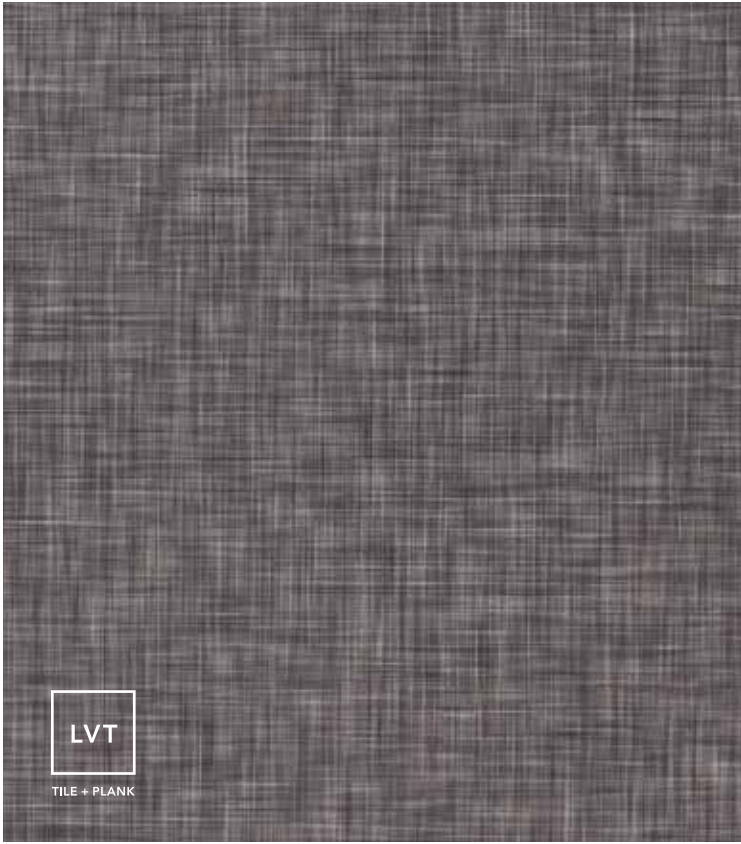


CABLE WEAVE



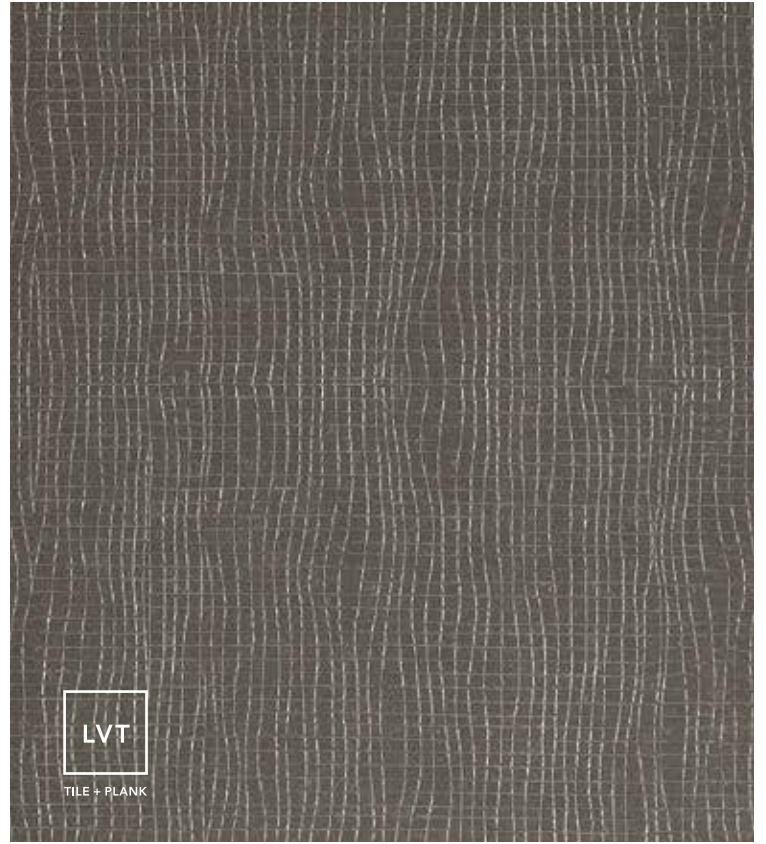
ASSERTIVE SERIES

PRODUCT COORDINATES – LVT



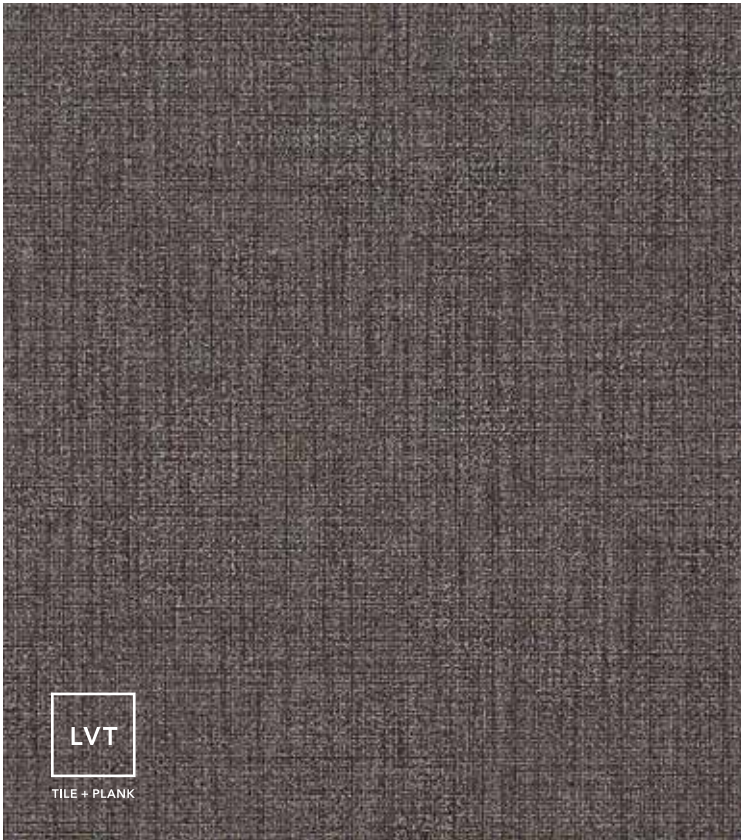
VENUE ABSTRACT, CRISS CROSS DOVER

UVA 5120



SUBSTRATE, SILT

CSU 0950



PORCELAIN, DAPPLE

CPN 0935



NUGRAIN, GUNMETAL

CNU 3710

THE ULTIMATE FLOORING EXPERIENCE

Tandus Centiva, a Tarkett company, creates innovative floorcovering solutions through our unique line of Powerbond®, Modular, Broadloom, Woven, LVT and MetalEdge transition products. Each of our product platforms offer coordinated styles, extensive color ranges and a variety of patterns and textures that enhance the appearance of any commercial environment. Tandus Centiva products are also designed to coordinate with a variety of Johnsonite wall base and finishing accessories, providing the Ultimate Flooring Experience across the Tarkett family of brands.



PRODUCT COORDINATES – TRANSITION: METALEGE COLLECTION

MetalEdge provides a transition solution and finish detail for any commercial space. It is offered in three aesthetically pleasing and tastefully refined systems, each engineered and colored to work with a vast array of Tandus Centiva soft and hard surface product platforms. Please contact your Tandus Centiva account executive for details.



STEEL 00179*



IRONSTONE 00178*



BLACK PEARL 00082*














BRASS 00176*

**These colors are metallic and may not be accurately represented. Please contact your Tandus Centiva account executive to order samples, 800.248.2878.*

CONSTRUCTION OPTIONS

All Tandus Centiva Modular options are 100% closed-loop recyclable through our ReStart® program and do not contain pesticides (antimicrobials) as part of our reduce chemical initiatives. We ensure 100% of the flooring samples returned are recycled or reused, guaranteed.

Modular	Backing Systems	Warranty	Rollability	100% Closed-loop Recyclable	Seams	Moisture Management	Installation	Recycled Content
	ER3®	lifetime LIMITED	 EXCELLENT	 RECYCLABLE			DIRECT GLUE	 RECYCLED CONTENT
	ethos®	lifetime LIMITED	 EXCELLENT	 RECYCLABLE			TANDUS TAPE+ DIRECT GLUE	 RECYCLED CONTENT
	Flex-Aire®	lifetime LIMITED	 GOOD	 RECYCLABLE			TANDUS TAPE+ PEEL & STICK DIRECT GLUE	 RECYCLED CONTENT


 = Rollability is the ability to move (or roll) pieces of furniture such as chairs or beds on flooring



ReStart® includes Tandus Centiva’s third-party certified reclamation and recycling program that reclaims and recycles post consumer flooring, installation waste, samples and portfolios. To initiate ReStart, contact customer service at 800-248-2878. ReStart is available for all Tarkett products and may be initiated by contacting your Tarkett representative.



CERTIFIED
 CERTIFIED
 CERTIFIED

Product	Recycled Content	Min. Post-Consumer Recycled Content	NSF 140 Rating
ER3® Modular	45-67%	20%	Platinum
ethos® Modular	26-51%	26%	Platinum
Flex-Aire® Cushion Modular	21-40%	4%	Gold

Recycled content varies by product style and has been certified by Scientific Certification Systems (SCS) Global Services. For a detailed analysis of how Tandus Centiva products perform in environmental rating systems such as LEED, please visit our ecoScorecard at tandus-centiva.ourgreenproducts.com. All vinyl products, when recovered, are 100% recyclable in Tandus Centiva’s closed-loop recycling process.



Tandus Centiva offers Environmental Product Declarations (EPD) for the following: ethos Modular, ER3 Modular, Flex-Aire Cushion Modular, Powerbond ethos Cushion, Powerbond Cushion and Powerbond Medfloor.

Tandus Centiva

EVOKE A0001

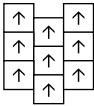


MODULAR

Coordinate Group:	12
Size:	Modular: 24" x 24" (60.9 cm x 60.9 cm) Modular: 18" X 36" (45.72 cm x 91.44 cm))
Surface Texture:	Tufted Patterned Syntex®
Yarn Content:	Dynex SD® Nylon
Dye Method:	Solution Dyed
Pile Height Average:	0.234" (5.9 mm)
Pattern Match:	Not Required
Modular Construction Options:	ER3® Modular, Flex-Aire® Cushion Modular, ethos® Modular

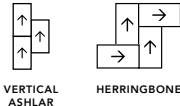
Modular Installation Options:

24" X 24":



VERTICAL ASHLAR

18" X 36":



VERTICAL ASHLAR

HERRINGBONE

Information subject to change. For samples, warranties and the most up-to-date specifications, visit tandus-centiva.com or call 800.248.2878.

Photos may not accurately depict color. Please order samples for exact product color.