



Suzanne Tick Design™

CODE SERIES

CODE 04628/CODE TRANSITION 04629  
24" x 24" Unidirectional Modular Installation



Tandus | Centiva  
A Tarkett Company



Suzanne Tick Design™

**CODE SERIES**

**CODE 04628/CODE TRANSITION 04629**  
24" x 24" Unidirectional Modular Installation  
See pages 16 and 17 for installation inspirations.





Tandus | Centiva



Suzanne Tick Design™

**CODE SERIES**

**MEGACODE 04630/CODE 04628/CODE TRANSITION 04629**  
24" x 24" Unidirectional & Mirror Modular Installation  
See pages 16 and 17 for installation inspirations.





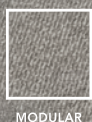
Tandus | Centiva



Suzanne Tick Design™

CODE SERIES

CODE 04628  
24" x 24" Unidirectional Modular Installation  
See pages 16 and 17 for installation inspirations.



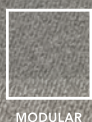
Tandus | Centiva



Suzanne Tick Design™

CODE SERIES

MEGACODE 04630  
24" x 24" Unidirectional Modular Installation  
See pages 16 and 17 for installation inspirations.



Tandus | Centiva



Suzanne Tick Design™

**CODE SERIES**

MEGACODE 04630/CODE 04628/CODE TRANSITION 04629  
24" x 24" Unidirectional & Mirror Modular Installation  
See pages 16 and 17 for installation inspirations.



MODULAR





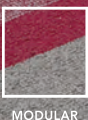
Tandus | Centiva



Suzanne Tick Design™

CODE SERIES

CODE 04628/CODE TRANSITION 04629  
24" x 24" Unidirectional Modular Installation  
See pages 16 and 17 for installation inspirations.





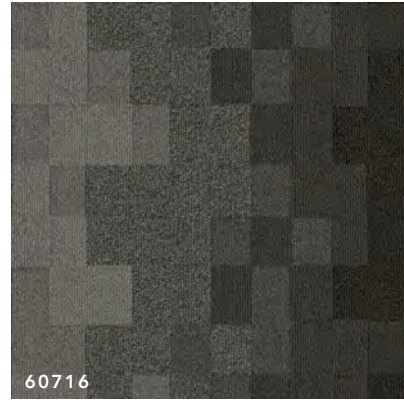
Tandus | Centiva

## CODE TRANSITION 04629

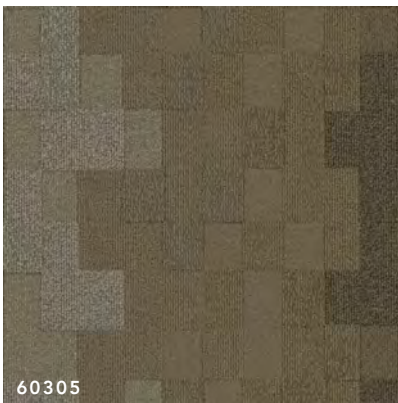
Images below represent the style Code Transition, a coordinate within the Code Series. For accurate color, scale and pattern representation, please visit our Product Catalog on [tandus-centiva.com](http://tandus-centiva.com) or contact your account executive to order a sample.



60102  
WILD OATS/GOSSAN



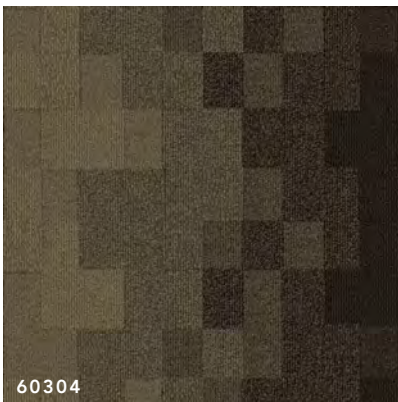
60716  
MID-GREY/AGATE



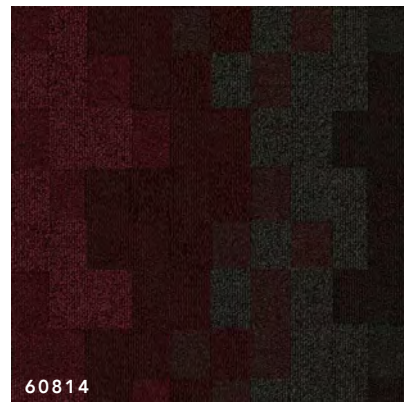
60305  
QUARTZITE/BOUGH



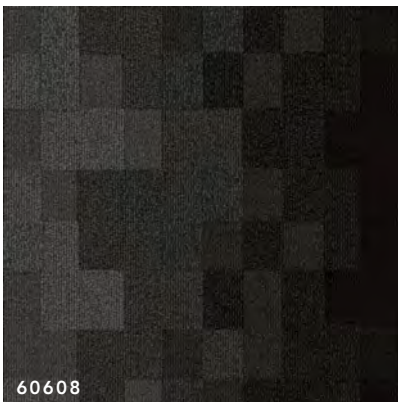
60406  
SHARD/SABLE



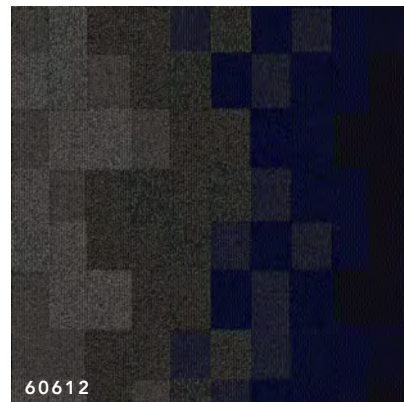
60304  
BOUGH/SABLE



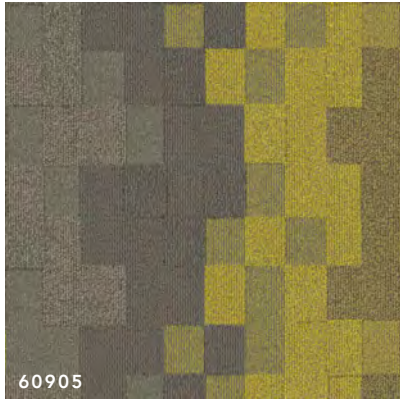
60814  
CURRANT/JET BLACK



60608  
SHARD/JET BLACK

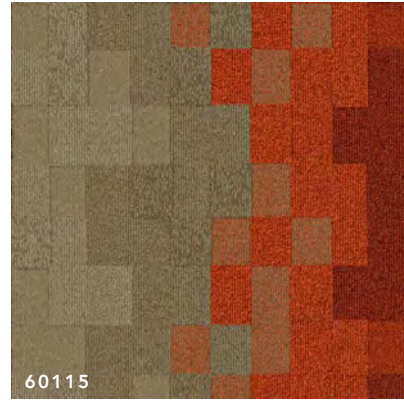


60612  
SHARD/DEEP BLUE



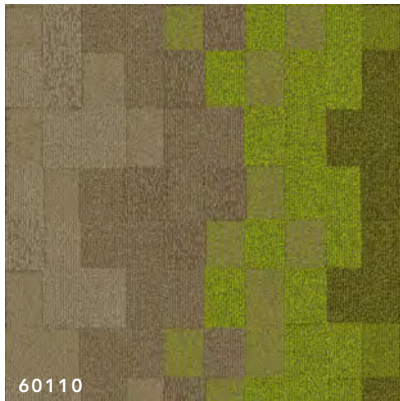
60905

QUARTZITE/CITRINE



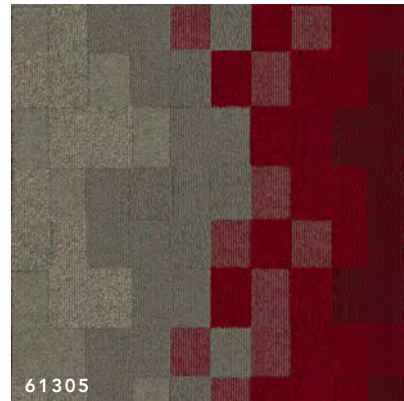
60115

WILD OATS/PERSIMMON



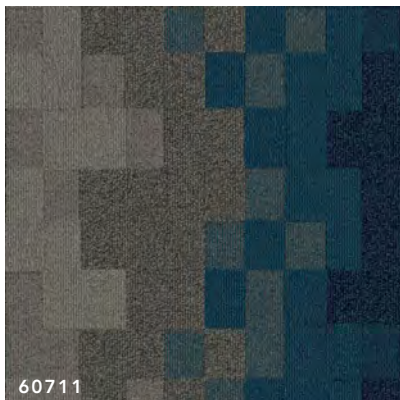
60110

WILD OATS/GLO LIGHT



61305

QUARTZITE/CRANBERRY



60711

AGATE/AJOITE

## CODE SERIES

Social media and the rapid streaming of information have given rise to virtual communities, where individuals can move beyond geographical boundaries to pursue common interests. Suzanne Tick takes the idea of digital connection and creates a design language that allows for the agile transformation of one color to another. This ability to adeptly connect is celebrated by the new Code Series, which is a metaphor for unique communication modes of present day technology and visual urban topography.

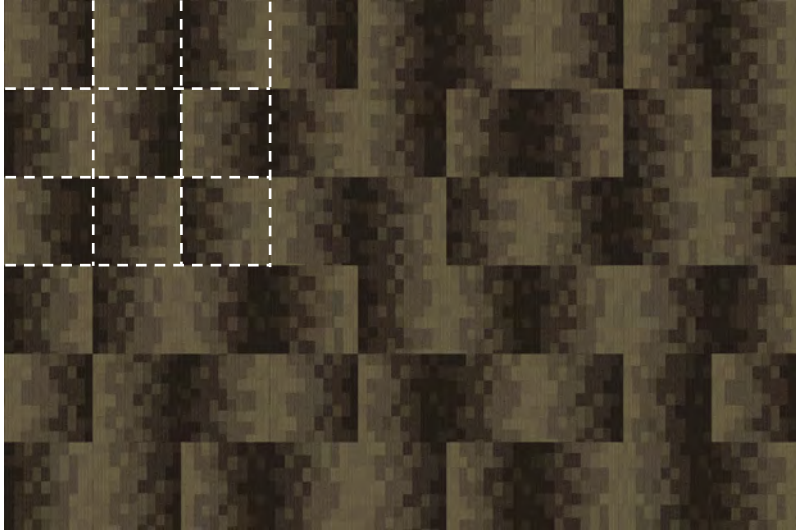




Tandus | Centiva

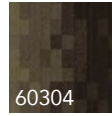
CODE SERIES INSTALLATION INSPIRATIONS

24" tiles

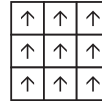


Code Transition

Color shown

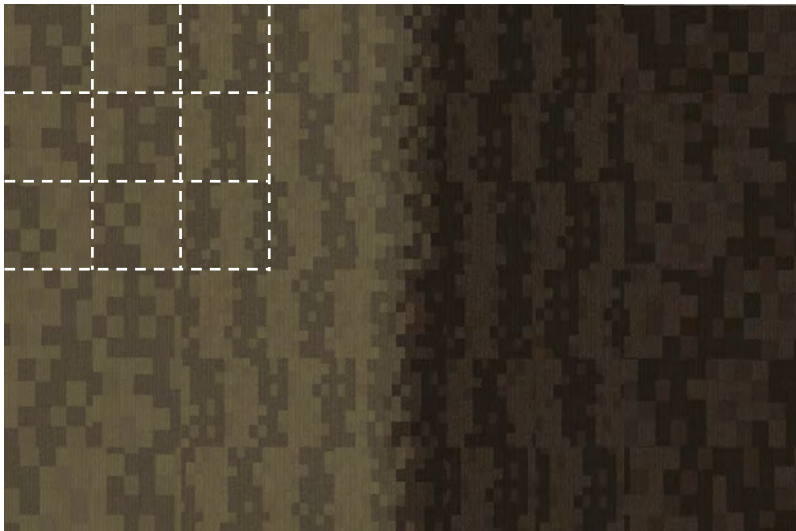


Code Transition  
Bough/Sable



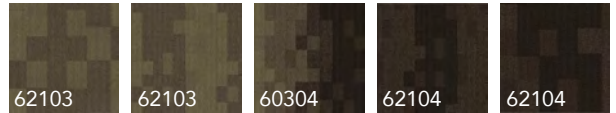
UNIDIRECTIONAL

24" tiles

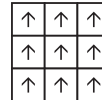


MegaCode/ Code/ Code Transition

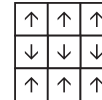
Colors shown (left to right)



MegaCode Bough    Code Bough    Code Transition Bough/Sable    Code Sable    MegaCode Sable



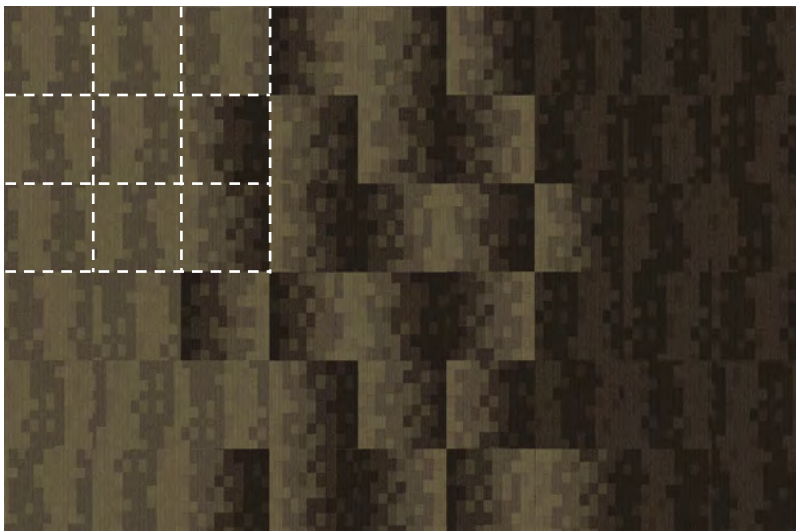
UNIDIRECTIONAL



MIRROR

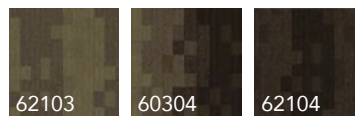
Some Code Transition tiles are mirrored to create a color transition. Code can be Unidirectional, or some tiles can be mirrored and mixed along the edge of Code Transition for a different aesthetic. MegaCode is Unidirectional.

24" tiles

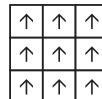


Code/ Code Transition

Colors shown (left to right)



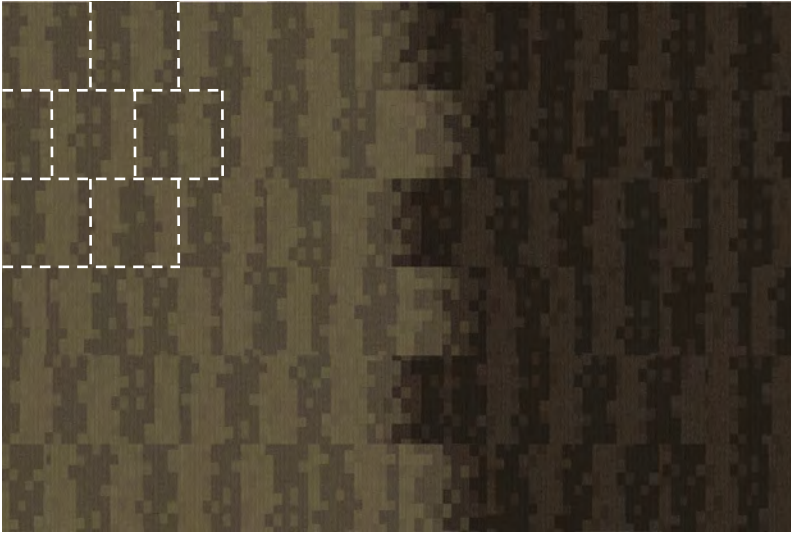
Code Bough    Code Transition Bough/Sable    Code Sable



UNIDIRECTIONAL

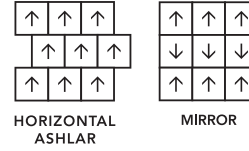
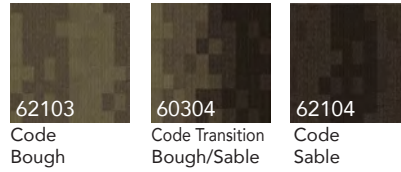


24" tiles



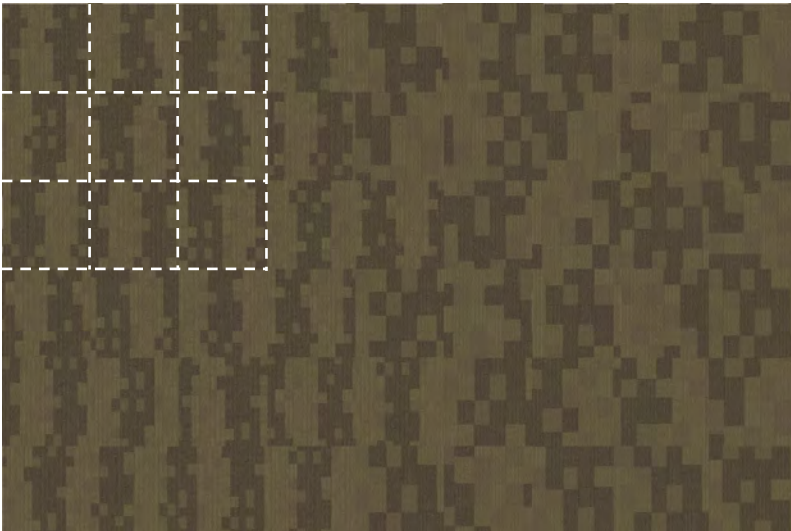
**Code/ Code Transition**

Color shown (left to right)



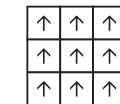
Some Code Transition tiles are mirrored to create a color transition.

24" tiles



**Code/ MegaCode**

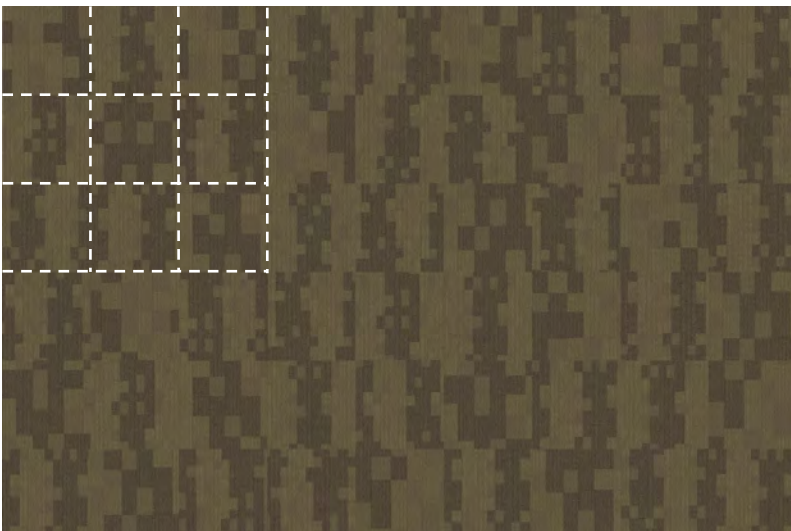
Colors shown (left to right)



UNIDIRECTIONAL

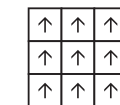
Scale shift going from Code to MegaCode.

24" tiles



**Code/ MegaCode**

Colors shown



UNIDIRECTIONAL

Tiles can be mixed for a combination of Code and MegaCode.

**PRODUCT COORDINATES – SOFT SURFACE**



**METRI**



**HALFTONE TRANSITION**



**PLEXUS COLOUR III**



**HALFTONE**

## PRODUCT COORDINATES – LVT

Tandus Centiva Soft Surface products coordinate with a variety of our LVT products.



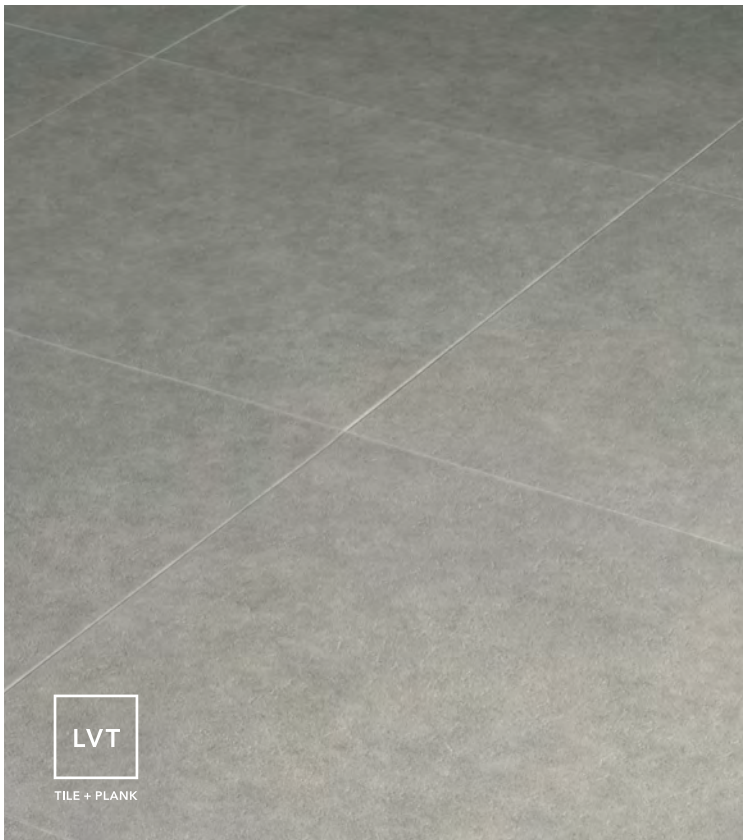
CONTOUR SERIES, GRAPHITE

FE 0793-C



CONTOUR SERIES, WHISPER

CP 3604-C



CONTOUR SERIES, COSTA

CS 0616-C



VICTORY SERIES, MOONDANCE

CR 0051-V

## PRODUCT COORDINATES – JOHNSONITE

The following colors have been selected from the Johnsonite palette as complements to Tandus Centiva products. Available in a broad offering of wall base and finishing accessories, each can provide the necessary finishing touches to any commercial space. Please contact your Johnsonite representative for details, 800.899.8916.



69 STERLING SILVER\*



38 PEWTER



179 STEEL\*



20 CHARCOAL



82 BLACK PEARL\*



63 BURNT UMBER



44 DARK BROWN



40 BLACK



27 MIST



194 ANTIQUE WHITE



34 ALMOND



09 CLAY



49 BEIGE



280 SHORELINE



281 GRIZZLY



29 MOON ROCK



150 WETLANDS



283 TOAST



101 SEAWEED



47 BROWN



41 SEA BREEZE



71 STORM CLOUD



92 BLUE LAGOON



168 THUNDER



190 GREEGE



73 PALM LEAF



264 GROUNDED



66 EITHER ORE\*



45 SANDALWOOD



261 AUTUMN



76 CINNAMON



284 GANACHE



132 ESPRESSO



113 CHESTNUTTY



85 BURGUNDY

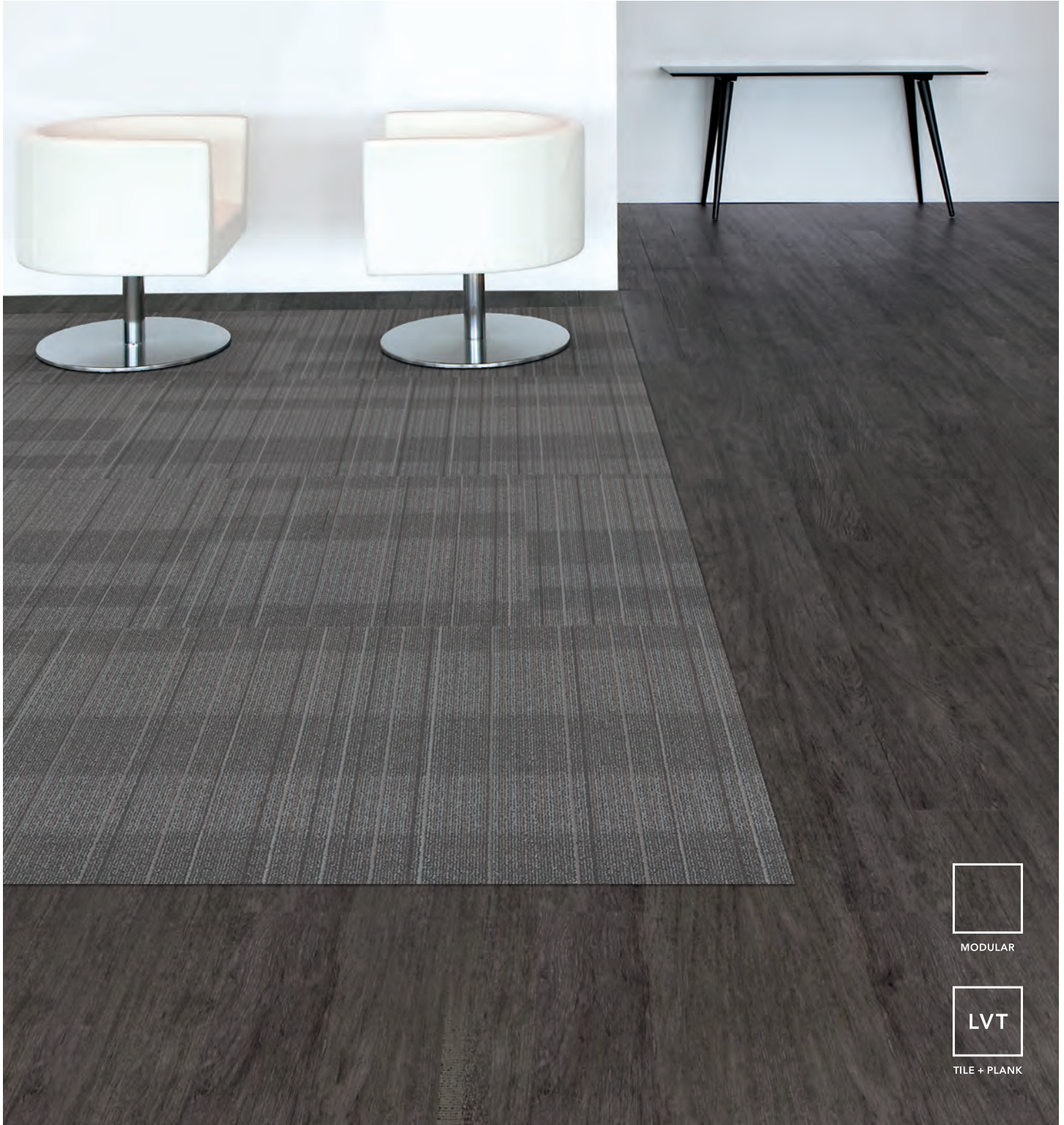


167 FUDGE

\*These colors are metallic and may not be accurately represented. Please contact your Johnsonite customer service representative to order samples.

## THE ULTIMATE FLOORING EXPERIENCE

Tandus Centiva, a Tarkett company, creates innovative floorcovering solutions through our unique line of Powerbond®, Freeform®, Modular, Broadloom, Woven and LVT products. Each of our product platforms offer coordinated styles, extensive color ranges and a variety of patterns and textures that enhance the appearance of any commercial environment. Tandus Centiva products are also designed to coordinate with a variety of Johnsonite wall base and finishing accessories, providing the Ultimate Flooring Experience under the Tarkett family of brands.



MODULAR














LVT  
TILE + PLANK





THE ULTIMATE  
FLOORING EXPERIENCE

## CONSTRUCTION OPTIONS

All Tandus Centiva Modular options are 100% closed-loop recyclable through our Infinity Initiative program and do not contain pesticides (antimicrobials) as part of our reduce chemical initiatives.

	Backing Systems	Warranty	Rollability	100% Closed-loop Recyclable	Seams	Moisture Management	Installation	Recycled Content
Modular	Conserv®	lifetime LIMITED					DIRECT GLUE	
	ER3®	lifetime LIMITED					PEEL & STICK DIRECT GLUE	
	ethos®	lifetime LIMITED					TANDUS TAPE DIRECT GLUE	
	Flex-Aire®	lifetime LIMITED					PEEL & STICK DIRECT GLUE	


 = Rollability is the ability to move (or roll) pieces of furniture such as chairs or beds on flooring  
 GOOD EXCELLENT



Restart is our program to reclaim vinyl-backed carpet after its useful life and recycle it into new ER3® backed floorcovering. This program also extends the life of materials by reusing and recycling samples and portfolios. To initiate Restart, contact customer service at 800.248.2878.

We ensure 100% of your materials and samples are reclaimed for recycling or reuse, guaranteed.



CERTIFIED  
CERTIFIED  
CERTIFIED

Product	Recycled Content	Min. Post-Consumer Recycled Content	NSF 140 Rating
ER3® Modular	45-67%	20%	Platinum
ethos® Modular	26-51%	26%	Platinum
Flex-Aire® Cushion Modular	21-40%	4%	Gold

Recycled content varies by product style and has been certified by Scientific Certification Systems (SCS) Global Services.

For a detailed analysis of how Tandus Centiva products perform in environmental rating systems such as LEED, please visit our ecoScorecard at [tandus-centiva.ourgreenproducts.com](http://tandus-centiva.ourgreenproducts.com).

All vinyl products, when recovered, are 100% recyclable in Tandus Centiva's closed-loop recycling process.



Tandus Centiva offers Environmental Product Declarations (EPD) for the following: ethos Modular, ER3 Modular, Flex-Aire Cushion Modular, Powerbond ethos Cushion, Powerbond Cushion and Powerbond Medfloor.

**CODE**  
**04628**



MODULAR

**CODE TRANSITION**  
**04629**



MODULAR

**MEGACODE**  
**04630**



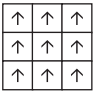
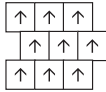
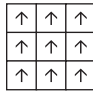
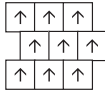
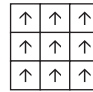
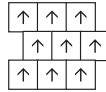
MODULAR

<b>Coordinate Group:</b>	12	12	12
<b>Size:</b>	Modular: 24" x 24" (60.9 cm x 60.9 cm)	Modular: 24" x 24" (60.9 cm x 60.9 cm)	Modular: 24" x 24" (60.9 cm x 60.9 cm)
<b>Surface Texture:</b>	Stratatec® Patterned Symtex®	Stratatec® Patterned Symtex®	Stratatec® Patterned Symtex®
<b>Yarn Content:</b>	Dynex SD® Nylon	Dynex SD® Nylon	Dynex SD® Nylon
<b>Dye Method:</b>	Solution Dyed	Solution Dyed	Solution Dyed
<b>Pile Height Average:</b>	0.187" (4.7mm)	0.187" (4.7mm)	0.187" (4.7mm)
<b>Pattern Match:</b>	N/A	N/A	N/A

**Modular**

<b>Construction Options:</b>	ER3® Modular, Flex-Aire® Cushion Modular, Conserv® Modular, ethos® Modular	ER3® Modular, Flex-Aire® Cushion Modular, Conserv® Modular, ethos® Modular	ER3® Modular, Flex-Aire® Cushion Modular, Conserv® Modular, ethos® Modular
------------------------------	--	--	--

**Modular**

<b>Installation Options:</b>	<p>24" X 24":</p>  <p>UNIDIRECTIONAL</p>  <p>HORIZONTAL ASHLAR</p>	<p>24" X 24":</p>  <p>UNIDIRECTIONAL</p>  <p>HORIZONTAL ASHLAR</p>	<p>24" X 24":</p>  <p>UNIDIRECTIONAL</p>  <p>HORIZONTAL ASHLAR</p>
------------------------------	--	---	--