

Tandus Centiva



# BACKINGS

Innovative technology. It's what we do.

---

## INTRODUCTION

---

### INNOVATIVE TECHNOLOGY. IT'S WHAT WE DO.

Our customers, when all is said and done, buy floorcoverings from Tandu Centiva. And it is those floorcoverings that must make good on our aspirations and commitments to design, performance and sustainability. We are proud to be the only company to provide Powerbond®, Freeform®, Modular, Broadloom, Woven and LVT products that all work in tandem. These products embody our commitments to our mission and to our customers.

### Powerbond®

In 1967 Tandu Centiva introduced Powerbond®, the industry's first hybrid resilient sheet flooring, a heterogeneous construction of closed-cell cushion and nylon wear layer. Powerbond is now available in three construction options: Cushion, Medfloor®, and ethos® Cushion.

### Freeform®

This innovative platform offers a precision cut, free lay, acoustical flooring solution for quick refresh and access needs. With product available that fits evenly together in virtually any way you put them down, design freedom and flexibility abound.

### Modular

In 1969 Tandu Centiva introduced the first modular carpet manufactured in North America. Our heritage of innovation in modular carpet design and performance grew to include operations in Suzhou, China providing product solutions across the globe. Modular carpet from Tandu Centiva is available with Conserv®, ER3®, ethos®, and Flex-Aire® construction options.

### Broadloom

Extending our product offerings with broadloom carpet provides our clients with choices on all product platforms. Attention to design and performance is the hallmark of our commercial broadloom products. Not an extension of residential broadloom, our commercial broadloom begins with rigorous performance specifications to meet the critical demands of floorcoverings in a commercial application. The Tandu Centiva broadloom construction options include Super-Lok®, LifeLong® and ErgoStep™.

### Woven

Beginning in 1803 Tandu Centiva was the first to provide woven products in North America. Drawing on the weaving techniques handed down through centuries, our design team takes a modern approach to woven broadloom. Tandu Centiva's woven products represent the ultimate in luxury and performance, while offering interesting studies in texture and relief. Today our woven products include Crossweave® and CrossCushion®, with the latter comprised of 8-11% postconsumer recycled content.

The market is crowded with choices and often confusion about product application and performance. At Tandu Centiva, our innovative technologies result in products that combine aesthetic excellence with robust performance and durability. Our range of offerings is designed to support a fit-for-purpose solution, enabling our customers to choose the exact product they need.



## HIGH PERFORMANCE – CLOSED-CELL CUSHION TECHNOLOGY

THE INNOVATIVE CLOSED-CELL CUSHION IS THE DNA FOR HIGH PERFORMANCE AND THE SINGLE GREATEST COMPONENT TO EXTENDED APPEARANCE RETENTION. TANDUS CENTIVA IS THE ONLY FLOORING MANUFACTURER TO OFFER CLOSED-CELL CUSHION TECHNOLOGY IN BOTH MODULAR AND POWERBOND.



POWERBOND® CUSHION - 1967

Proven to perform without failure for more than 40 years  
Hybrid resilient sheet flooring  
Closed-cell cushion technology  
Superior comfort under foot  
Energy savings & thermal insulation  
Excellent acoustic control  
Wall-to-wall impermeable moisture barrier  
Minimum 7% postconsumer content (overall); 100% recyclable  
SCS Global Certified - NSF 140 Gold  
Environmental Product Declaration (EPD)  
Lifetime warranty



FLEX-AIRE® CUSHION MODULAR - 1997

Closed-cell cushion technology  
Superior comfort under foot  
Energy savings & thermal insulation  
Excellent acoustic control  
21-40% recycled content (overall); 100% recyclable  
SCS Global Certified - NSF 140 Gold  
Environmental Product Declaration (EPD)  
Lifetime warranty





## PERFORMANCE - POWERBOND & MODULAR

PERFORMANCE HAS ALWAYS BEEN AT THE CORE OF OUR HERITAGE OF INNOVATIVE PRODUCTS WITH THE INTRODUCTION OF POWERBOND IN 1967, A HYBRID RESILIENT SHEET FLOORING AND THE FIRST MODULAR CARPET MANUFACTURED IN NORTH AMERICA.



POWERBOND® MEDFLOOR® - 1969

Hybrid resilient sheet flooring, heterogeneous construction  
Closed-cell technology to ensure durability  
Excellent rollability for hospital corridors  
Powerbond wall-to-wall moisture barrier  
Minimum 7% recycled content (overall); 100% recyclable  
Lifetime warranty  
Environmental Product Declaration (EPD)



CONSERV® MODULAR - 1969

Available in 18", 24", 36" tiles  
Weighs 25% less, with fewer non-renewable resources  
100% recyclable  
Excellent rollability  
Lifetime warranty



## PERFORMANCE - FREEFORM®

THIS INNOVATIVE PLATFORM OFFERS A PRECISION CUT, FREE LAY, ACOUSTICAL FLOORING SOLUTION FOR QUICK REFRESH AND ACCESS NEEDS. WITH PRODUCT AVAILABLE IN TWO SIZES THAT FIT EVENLY TOGETHER IN VIRTUALLY ANY WAY YOU PUT THEM DOWN, DESIGN FREEDOM AND FLEXIBILITY ABOUND.



FREEFORM® - 2014

Precision cut for virtually seamless installation

Improves acoustics and provides comfort underfoot

Evenly divisible sizes offer unique design capabilities

Free lay panels offer building block flexibility to expand, contract or relocate

Free lay for immediate access to subfloor or raised panels with no adhesives required

Available in 18" x 45" and 9" x 90"\*

\*6' large panel available in 2015





## PERFORMANCE - BROADLOOM

AFTER MORE THAN 100 YEARS, TANDUS CENTIVA CONTINUES TO CREATE AWARD-WINNING BROADLOOM WITH A FLAIR FOR DESIGN AND A REPUTATION FOR SUPERIOR QUALITY.



SUPER-LOK® - 1992

Enriched synthetic latex backing for high performance (less filler)

Excellent rollability

Low VOCs

Complies with CRI Green Label Plus



ERGOSTEP™ - 1999

Cushion technology improves appearance retention properties

Impedes moisture intrusion

Enhanced acoustical and thermal properties

Superior comfort under foot

8-10% postconsumer recycled content



LIFELONG® - 2006

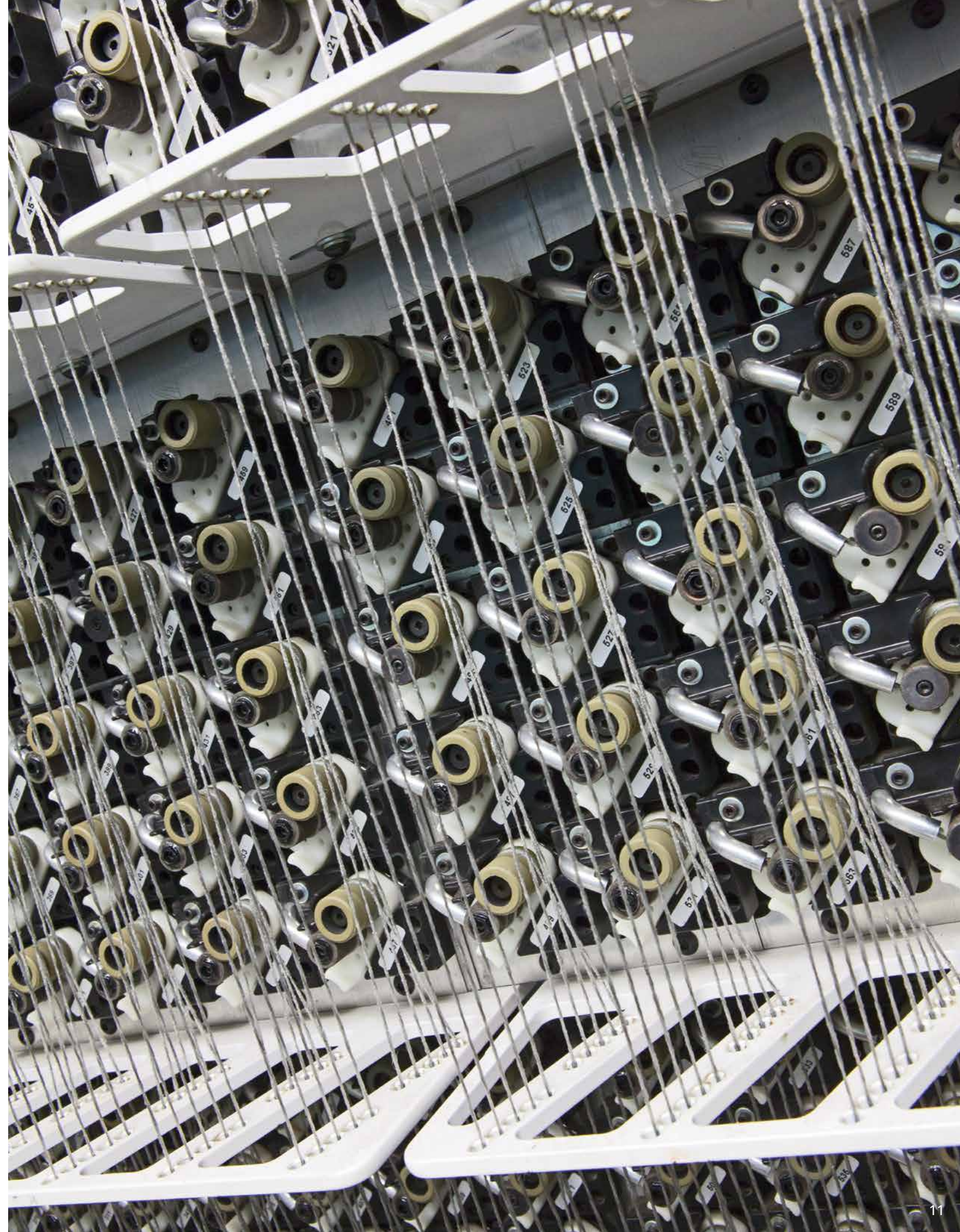
Acrylic backing for moisture resistance and durability

Will not degrade with maintenance or moisture

Excellent rollability

28-40% pre-consumer recycled content (overall)

Contributes toward LEED™ points





**ER3®**

**ER3 IS THE INDUSTRY'S FIRST 100% RECYCLED CONTENT SECONDARY BACKING, COMBINING BOTH PRE- AND POSTCONSUMER WASTE INTO THE INDUSTRY'S FIRST THIRD-PARTY CERTIFIED MODULAR CARPET.**



ER3® MODULAR - 1996

100% recycled content (secondary backing)

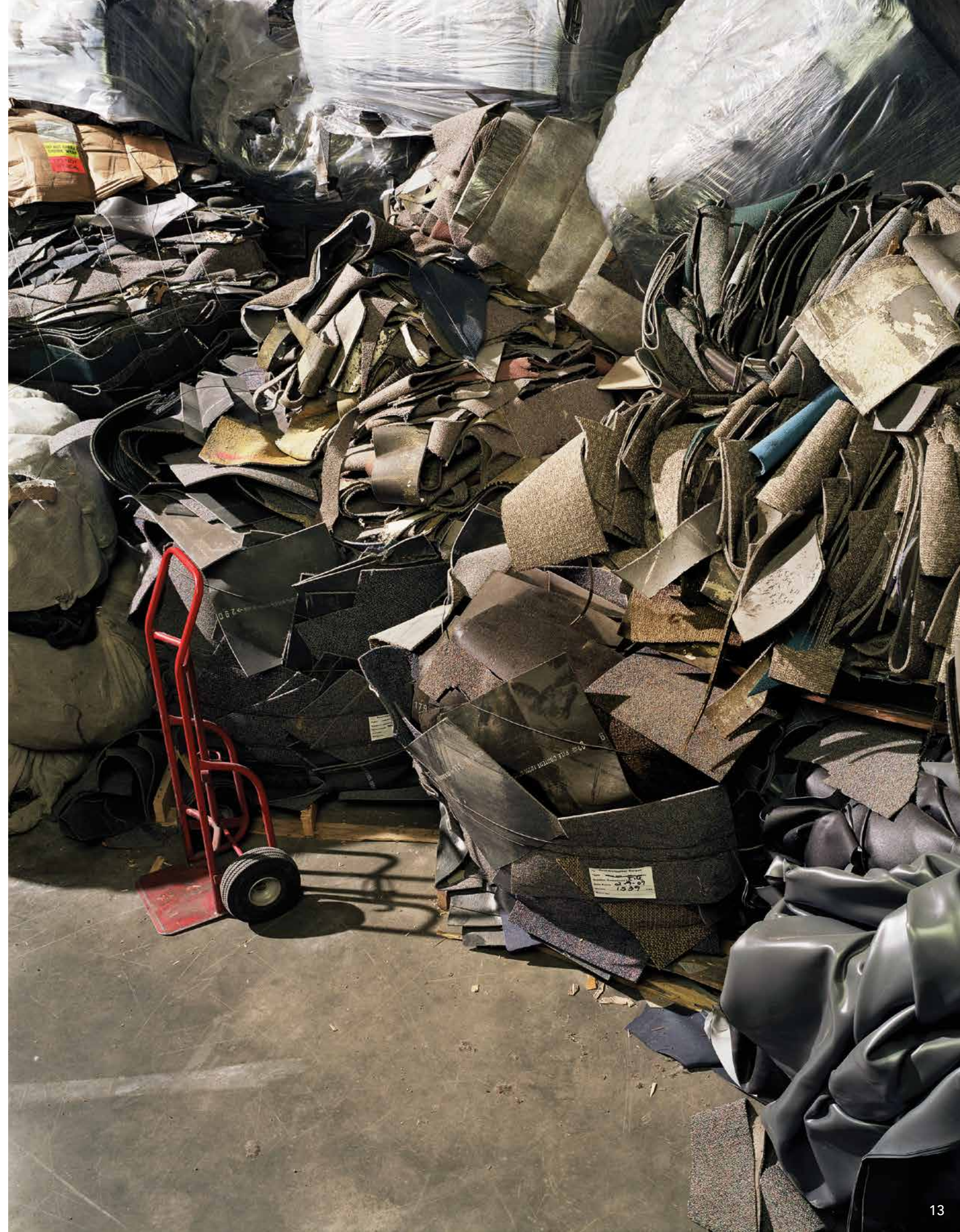
Contains minimum 20% postconsumer carpet content, 45-67% overall recycled content; 100% recyclable

SCS Global Certified - NSF 140 Platinum

Environmental Product Certification (EPD)

Excellent rollability

Lifetime warranty





---

## ETHOS®

UTILIZING A PREVIOUSLY UNTAPPED WASTE STREAM, TANDUS CENTIVA DEVELOPED ETHOS, A HIGH-PERFORMANCE POLYMER RECYCLED FROM DISPOSED WINDSHIELDS AND SAFETY GLASS. TANDUS CENTIVA'S ETHOS MODULAR IS CRADLE TO CRADLE CERTIFIED<sup>CM</sup> SILVER (V3), THE FIRST AMERICAN MODULAR CARPET TILE TO ACHIEVE THIS LEVEL OF CERTIFICATION.



POWERBOND® ETHOS® CUSHION - 2004

- Hybrid resilient sheet flooring
- Closed-cell cushion technology
- 76% recycled content (closed-cell cushion)
- 37-62% recycled content (overall) ; minimum 37% postconsumer content
- Energy savings & thermal insulation
- SCS Global Certified - NSF 140 Platinum
- Environmental Product Declaration (EPD)
- Environmental and Health Statement
- Wall-to-wall impermeable moisture barrier
- 100% recyclable
- Lifetime warranty



ETHOS® MODULAR - 2010

- C2C V3 Silver
- 26-52% recycled content (overall)
- Minimum 26% postconsumer content (overall)
- SCS Global Certified - NSF 140 Platinum
- Environmental Product Declaration (EPD)
- Environmental and Health Statement
- Non-chlorinated thermoplastic polymer
- Additive avoidance - no pesticides
- 100% recyclable
- Lifetime warranty





---

## WOVEN

IN 1803, TANDUS CENTIVA CENTIVA ESTABLISHED THE IMPORT OF CARPET INTO NORTH AMERICA WITH WOVEN CARPET. DRAWING ON THE WEAVING TECHNOLOGIES HANDED DOWN THROUGH THE CENTURIES, OUR WOVEN FLOORCOVERINGS REPRESENT THE ULTIMATE IN LUXURY AND PERFORMANCE.



CROSSWEAVE® WOVEN TECHNOLOGY - 1964

Traditional and eloquent appearance

Engineered for exceptional long-term performance

No delamination and resistant to yarn zippering

Exceptional seaming properties and dimensional stability

Loops are precision formed to maintain pattern trueness and scale

Framework combines backing yarns and face fiber into one inseparable unit

15-Year limited warranty



CROSSCUSHION® WOVEN - 1985

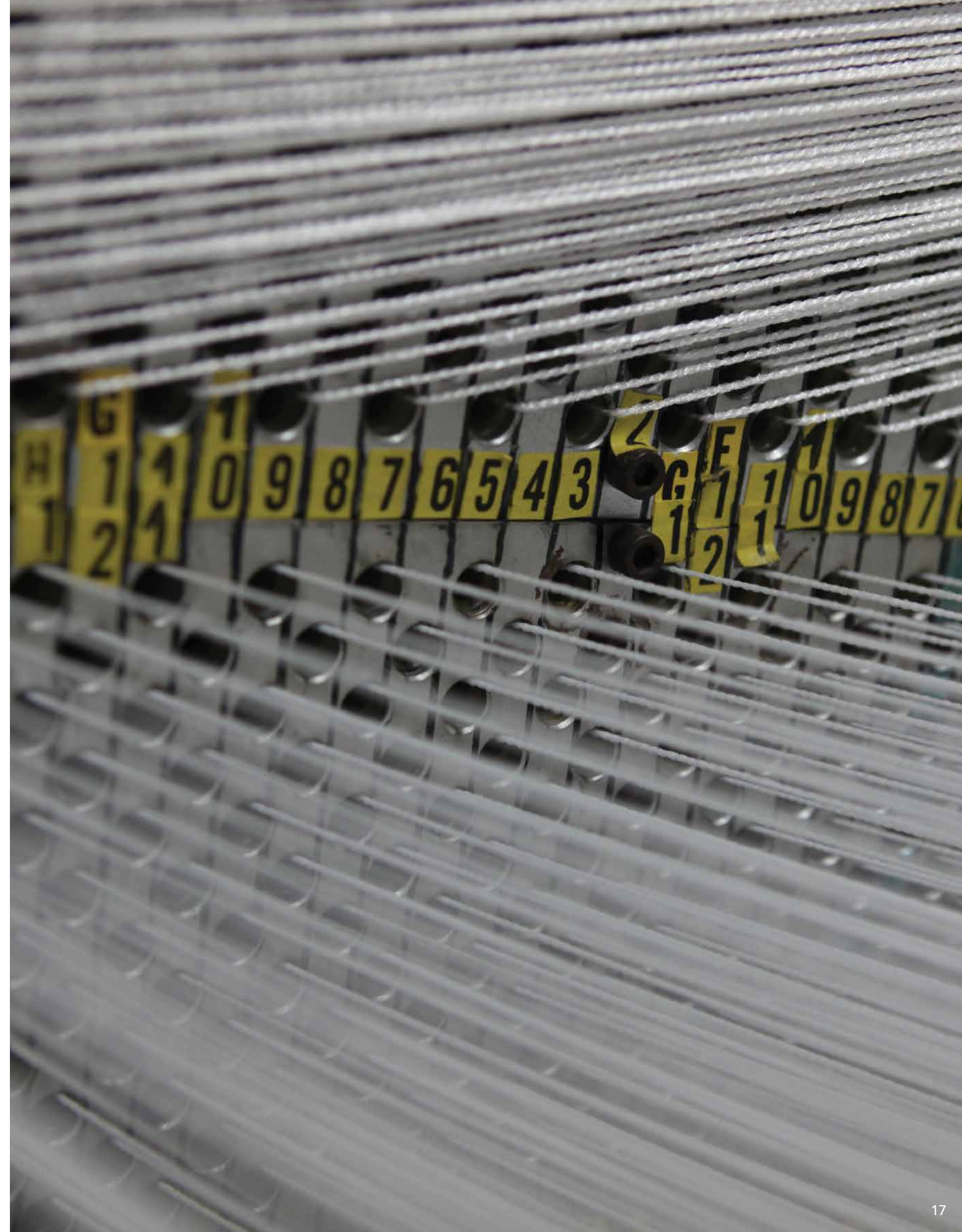
Recycled content combined with moisture impediment extends product life

Cushion technology improves appearance retention properties

Enhanced acoustical and thermal properties

Underfoot comfort and luxury

8-10% postconsumer recycled content (overall)





# PERFORMANCE MATRIX

INNOVATIVE TECHNOLOGY. IT'S WHAT WE DO. OUR RANGE OF OFFERINGS ARE DESIGNED TO SUPPORT A FIT-FOR-PURPOSE SOLUTION, ENABLING OUR CUSTOMERS TO CHOOSE THE EXACT PRODUCT THEY NEED.

	Backing Systems	Warranty	Rollability	End of Use	Seams	Moisture Management	Cushion	Installation	Third-Party Certification	Recycled Content	EPD	C2C
Powerbond®	Powerbond® Cushion											
	Powerbond® Medfloor®											
	Powerbond® ethos® Cushion											
Freeform®												
Modular	Conserv®											
	ER3®											
	ethos®											
	Flex-Aire®											
Broadloom	Super-Lok®											
	LifeLong®											
	ErgoStep™											
Woven	Crossweave®											
	CrossCushion®											



## POWERBOND® CUSHION



INTRODUCED IN 1967  
POWERBOND

Size  
6 ft/1.8 m (width) x 100 ft/30.5 m (length)

Installation  
RS System (Peel & Stick) or Direct Glue

**Product Benefits**  
Good rollability • High traffic performance • Wall-to-wall moisture barrier • Comfort underfoot • Ease of maintenance • Permanent inlays • Acoustical enhancement • Radon reduction barrier • Promotes good IAQ • Low VOC emissions • Installs over carpet • Impermeable moisture barrier • Will not support microbial growth • Energy savings • Reduces slip/fall injury • No pesticides (antimicrobials) • Complies with CRI Green Label Plus standard • SCS Global Certified NSF 140 Gold • UL Certified Environmental Product Declaration

Tandus Centiva Product Attributes

Tandus Centiva	Product Specifications	
Product Width	6 ft/1.8 m (width) x 100 ft /30.5 m (length)	R-value 0.84
Primary Tufting Substrate	Non-woven Synthetic Fabric	Acoustic 0.22
Pre-Coat	Thermoplastic Polymer	RS Installation System Non-wet peel & stick adhesive applied during manufacturing
Cushion Layer	Closed-cell Cushion 19% postconsumer content	Moisture Barrier Moisture penetration by impact at seams @ 10 psi: No penetration after 10,000 impacts
Cushion Density	18.5 lbs/cu ft, 296 kg/cu m	Seam Integrity Seam to remain intact after 50,000 cycles (Phillips Chair Test)
Cushion Thickness	0.156 in, 4.0 mm	Recycled Content Minimum 7% postconsumer content (overall), 7- 32% recycled content (overall)
Compression Set	Max 10%	Recyclable 100% recyclable through ReStart®
Compression Deflection	Min 7 lbs/sq in @25% Min 492 g/sq cm (ASTM D-1667)	Warranty Non-prorated Lifetime Limited

## POWERBOND® MEDFLOOR®



INTRODUCED IN 1969  
HYBRID RESILIENT SHEET FLOORING

Size  
6 ft/1.8 m (width) x 100 ft/30.5 m (length)

Installation  
RS System (Peel & Stick) or Direct Glue

**Product Benefits**  
Excellent rollability • High traffic performance • Wall-to-wall moisture barrier • Comfort underfoot • Ease of maintenance • Permanent inlays • Acoustical enhancema

Tandus Centiva Product Attributes

Tandus Centiva	Product Specifications	
Product Width	6 ft/1.8 m (width) x 100 ft/30.5 m (length)	R-value 0.71
Primary Tufting Substrate	Non-woven Synthetic Fabric	Acoustic 0.20
Pre-Coat	Thermoplastic Sealant Polymer	RS Installation System Non-wet peel & stick adhesive applied during manufacturing
Cushion Layer	Closed-cell Cushion 19% postconsumer content	Moisture Barrier Moisture penetration by impact at seams @ 10 psi: No penetration after 10,000 impacts
Density	36 lbs/cu ft, 577 kg/cu m	Seam Integrity Seam to remain intact after 50,000 cycles (Phillips Chair Test)
Thickness	0.085 in, 2.2 mm	Recycled Content Minimum 7% postconsumer content (overall), 7-31% recycled content (overall)
Compression Set	Max 10% (ASTM D-1667)	Recyclable 100% recyclable
Compression Deflection	Min 29 lbs/sq inch @25% (ASTM D-1667)	Warranty Non-prorated Lifetime Limited



## POWERBOND® ETHOS® CUSHION



**INTRODUCED IN 2004**  
**HYBRID RESILIENT SHEET FLOORING**

**Size**  
6 ft/1.8 m (width) x 100 ft/30.5 m (length)

**Installation**  
Direct Glue

**Product Benefits**  
Excellent rollability • Wall-to-wall moisture barrier • Comfort underfoot • Ease of maintenance • Permanent inlays • Acoustical enhancement • Promotes good IAQ • Low VOC emissions • Impermeable to moisture • Will not support microbial growth • Energy savings • Reduces slip/fall injury • No pesticides (antimicrobials) • Complies with CRI Green Label Plus standard • SCS Global Certified NSF 140 Platinum • Made from non-chlorinated polymer found in film from windshields and other safety glass • UL Certified Environmental Product Declaration

Tandus Centiva	Product Attributes

Tandus Centiva	Product Specifications	
<b>Product Width</b>	6 ft/1.8 m (width) x 100 ft /30.5 m (length)	<b>Acoustic</b> 0.14
<b>Primary Tufting Substrate</b>	Non-woven Synthetic Fabric	<b>Compression Deflection</b> Min 15 lbs/sq inch @ 25% (ASTM D - 1667)
<b>Pre-Coat</b>	Thermoplastic Sealant Polymer	<b>Moisture Barrier</b> Moisture penetration by impact at seams @ 10 psi: No penetration after 10,000 impacts
<b>Cushion Layer</b>	Recycled Content Closed-Cell Cushion Polyvinyl Butyral (PVB) 76% postconsumer recycled content PVB cushion	
<b>Cushion Density</b>	Min 32 lbs/cu ft Min 513 kg/cu m	<b>Seam Integrity</b> Seam to remain intact after 50,000 cycles (Phillips Chair Test)
<b>Cushion Thickness</b>	0.1 inch, 2.5 mm	<b>Recycled Content</b> 37 - 62% recycled content (overall) Minimum 37% postconsumer recycled content 100% recyclable
<b>Compression Set</b>	Max 10% (ASTM D - 1667)	
		<b>Warranty</b> Non-prorated Lifetime Limited

## FREEFORM®



**INTRODUCED IN 2014**  
**FREEFORM CARPET**

**Size**  
18 in x 45 in/45.72 cm x 114.3 cm, 9 in x 90 in/22.86 cm x 228.6 cm

**Installation**  
Free lay

**Product Benefits**  
Comfort underfoot • Access flooring installations • Systems furniture installation • Low VOC emissions • Closed loop recycling • SCS Global Certified-NSF 140 Gold • Energy savings • Improves acoustics • No pesticides (antimicrobials) • Complies with CRI Green Label Plus standard • UL Certified Environmental Product Declaration

Manufacturer adequately reports which portions of the products are recyclable when product contains both recyclable and non-recyclable components, per FTC guides 16 CFR section 260.7 (d)

Tandus Centiva	Product Attributes

Tandus Centiva	Product Specifications	
<b>Product Size</b>	9 in x 90 in / 22.86 cm x 228.6 cm 18 in x 45 in / 45.72 cm x 114.3 cm	<b>Adhesive System</b> None required
<b>Primary Tufting Substrate</b>	Non-woven Synthetic Fabric	<b>Recycled Content</b> 21 - 40% recycled content (overall) Minimum 4% post-consumer 100% recyclable
<b>Pre-Coat</b>	Thermoplastic Polymer	
<b>Secondary Backing</b>	Closed-cell Cushion 35% pre-consumer recycled content	<b>Warranty</b> Non-prorated Limited Lifetime
<b>Cushion Density</b>	18.5 lbs/cu ft 296 kg/cu m (ASTM D-1667)	
<b>Cushion Thickness</b>	0.156 in / 4.0 mm	
<b>Compression Set</b>	Max 10%	
<b>Compression Deflection</b>	Min 5 lbs/sq in @ 25% Min 352 g/sq cm	



## CONSERV® MODULAR



### INTRODUCED IN 1969 MODULAR CARPET

**Size**  
18 in/45.7 cm tile, 24 in/60.9 cm tile, 36 in/91.4 cm tile

**Installation**  
Direct Glue

**Product Benefits**  
Excellent rollability • Access flooring installations • Systems furniture installation • Low VOC emissions • Closed-loop recycling • Impervious to moisture • Will not support microbial growth • Improves acoustics • Conserves raw materials • Weighs 25% less than standard carpet tile • No pesticides (antimicrobials) • Complies with CRI Green Label Plus standard

Manufacturer adequately reports which portions of the products are recyclable when product contains both recyclable and non-recyclable components, per FTC guides 16 CFR section 260.7 (d)

Tandus Centiva	Product Attributes

Tandus Centiva	Product Specifications
<b>Product Size</b>	18 in x 18 in / 45.7 cm x 45.7 cm 24 in x 24 in / 60.9 cm x 60.9 cm 36 in x 36 in / 91.4 cm x 91.4 cm
<b>Primary Tufting Substrate</b>	Non-woven Synthetic Fabric
<b>Pre-Coat</b>	Thermoplastic Polymer
<b>Secondary Backing</b>	Thermoplastic Polymer Impermeable to Moisture
<b>Backing Density</b>	Min 120 lbs/cu ft 1,922 kg/cu m (ASTM D - 1667)
<b>Backing Thickness</b>	0.041 in / 1.0 mm
<b>Recyclable</b>	100% recyclable
<b>Warranty</b>	Non-prorated Lifetime Limited

## ER3® MODULAR



### INTRODUCED IN 1996 MODULAR CARPET

**Size**  
18 in/45.7 cm tile, 24 in/60.9 cm tile, 36 in/91.4 cm tile

**Installation**  
RS System (Peel & Stick) or Direct Glue

**Product Benefits**  
Excellent rollability • Access flooring installations • Systems furniture installation • Low VOC emissions • 100% recycled content backing • Closed loop recycling • Impervious to moisture • Will not support microbial growth • Improves acoustics • No pesticides (antimicrobials) • Complies with CRI Green Label Plus standard • SCS Global Certified NSF 140 Platinum • UL Certified Environmental Product Declaration

Manufacturer adequately reports which portions of the products are recyclable when product contains both recyclable and non-recyclable components, per FTC guides 16 CFR section 260.7 (d)

Tandus Centiva	Product Attributes

Tandus Centiva	Product Specifications
<b>Product Size</b>	18 in x 18 in / 45.7 cm x 45.7 cm 24 in x 24 in / 60.9 cm x 60.9 cm 36 in x 36 in / 91.4 cm x 91.4 cm
<b>Primary Tufting Substrate</b>	Non-woven Synthetic Fabric
<b>Pre-Coat</b>	Thermoplastic Polymer
<b>Secondary Backing</b>	100% recycled content Minimum 70% postconsumer carpet content
<b>Backing Density</b>	Min 65.0 lbs/cu ft 1,041 kg/cu m (ASTM D - 1667)
<b>Backing Thickness</b>	0.087 in / 2.2 mm
<b>R-value</b>	0.46
<b>Tru Block</b>	High Density Polymeric Barrier System
<b>RS Installation System</b>	Non-wet peel & stick adhesive applied during manufacturing
<b>Recycled Content</b>	45 - 67% recycled content (overall) Minimum 20% postconsumer content
<b>Warranty</b>	Non-prorated Lifetime Limited



## ETHOS® MODULAR



### INTRODUCED IN 2010 MODULAR CARPET

**Size**  
18 in/45.7 cm tile, 24 in/60.9 cm tile, 36 in/91.4 cm tile

**Installation**  
Direct Glue

**Product Benefits**  
Excellent rollability • Access flooring installations • Systems furniture installation • Low VOC emissions • Closed loop recycling • 26-50% product recycled content • Made from recycled non-chlorinated polymer found in film from windshields and other safety glass • Impervious to moisture • Will not support microbial growth • Improved acoustics • No pesticides (antimicrobials) • Complies with CRI Green Label Plus standard • SCS Global Certified NSF 140 Platinum • UL Certified Environmental Product Declaration

Manufacturer adequately reports which portions of the products are recyclable when product contains both recyclable and non-recyclable components, per FTC guides 16 CFR section 260.7 (d)

Tandus Centiva	Product Attributes

Tandus Centiva	Product Specifications
<b>Product Size</b>	18 in x 18 in / 45.7 cm x 45.7 cm 24 in x 24 in / 60.9 cm x 60.9 cm 36 in x 36 in / 91.4 cm x 91.4 cm
<b>Primary Tufting Substrate</b>	Non-woven Synthetic Fabric
<b>Pre-Coat</b>	Thermoplastic Polymer
<b>Secondary Backing</b>	Minimum 50% postconsumer content
<b>Backing Density</b>	Min 65 lbs/cu ft 1,041 kg/cu m (ASTM D-1667)
<b>Backing Thickness</b>	0.050 in / 1.3 mm
<b>Recycled Content</b>	26 - 51% recycled content (overall) Minimum 26% postconsumer content 100% recyclable
<b>Warranty</b>	Non-prorated Lifetime Limited

## FLEX-AIRE® CUSHION MODULAR



### INTRODUCED IN 1997 MODULAR CARPET

**Size**  
18 in/45.7 cm tile, 24 in/60.9 cm tile, 36 in/91.4 cm tile

**Installation**  
RS System (Peel & Stick) or Direct Glue

**Product Benefits**  
Good rollability • Comfort underfoot • Access flooring installations • Systems furniture installation • Low VOC emissions • Closed loop recycling • SCS Global Certified-NSF 140 Gold • Energy savings • Improves acoustics • No pesticides (antimicrobials) • Complies with CRI Green Label Plus standard • UL Certified Environmental Product Declaration

Manufacturer adequately reports which portions of the products are recyclable when product contains both recyclable and non-recyclable components, per FTC guides 16 CFR section 260.7 (d)

Tandus Centiva	Product Attributes

Tandus Centiva	Product Specifications
<b>Product Size</b>	18 in x 18 in / 45.7 cm x 45.7 cm 24 in x 24 in / 60.9 cm x 60.9 cm 36 in x 36 in / 91.4 cm x 91.4 cm
<b>Primary Tufting Substrate</b>	Non-woven Synthetic Fabric
<b>Pre-Coat</b>	Thermoplastic Polymer
<b>Secondary Backing</b>	Closed-cell Cushion 35% preconsumer recycled content
<b>Cushion Density</b>	18.5 lbs/cu ft 296 kg/cu m (ASTM D-1667)
<b>Cushion Thickness</b>	0.156 in / 4.0 mm
<b>Compression Set</b>	Max 10%
<b>Compression Deflection</b>	Min 5 lbs/sq in @ 25% Min 352 g/sq cm
<b>RS Adhesive System</b>	Non-wet peel & stick adhesive applied during manufacturing
<b>Recycled Content</b>	21 - 40% recycled content (overall) Minimum 4% postconsumer 100% recyclable
<b>Warranty</b>	Non-prorated Limited Lifetime



## SUPER-LOK®



### INTRODUCED IN 1992 BROADLOOM CARPET

**Size**  
12 ft / 3.66 m (width)  
12 ft, 6 in / 3.8 m (width)

**Installation**  
Direct Glue

**Product Benefits**  
Excellent rollability • Economic construction • Outstanding tuft bind • Increases protection against edge ravel • Fast installation • Low VOC emissions • Complies with CRI Green Label Plus Standard

Tandus Centiva

Product Attributes

WARRANTY

10

YEAR

ROLLABILITY

OO

EXCELLENT

END OF USE

Tandus Centiva	Product Specifications	
<b>Product Size</b>	12 ft / 3.66 m (width) 12 ft, 6 in / 3.8 m (width) (style specific)	
<b>Primary Tufting Substrate</b>	Woven Polypropylene	
<b>Pre-Coat</b>	Enriched Synthetic Latex	
<b>Secondary Backing</b>	Woven Polypropylene	
<b>Installation</b>	Direct Glue	
<b>Warranty</b>	10 years	

## LIFELONG®



### INTRODUCED IN 2006 BROADLOOM

**Size**  
12 ft / 3.66 m (width)  
12 ft, 6 in / 3.8 m (width)

**Installation**  
Direct Glue

**Product Benefits**  
Excellent rollability • Meets Modified British Spill Test • Outstanding tuft bind • Longer edge ravel warranty • Longer lamination warranty • Will not degrade with maintenance • Low VOC emissions • No pesticides (antimicrobials) • Complies with CRI Green Label Plus Standard

Tandus Centiva

Product Attributes

WARRANTY

20

YEAR

ROLLABILITY

OO

EXCELLENT

END OF USE

MOISTURE

IMPACT 0 @ 10,000

RECYCLED CONTENT

Tandus Centiva	Product Specifications	
<b>Product Size</b>	12 ft / 3.66 m (width) 12 ft, 6 inches / 3.8 m (width) (style specific)	<b>Installation</b> Direct Glue
<b>Primary Tufting Substrate</b>	Woven Polypropylene	<b>Recycled Content</b> 28 - 40% preconsumer recycled content (overall)
<b>Pre-Coat</b>	High Performance Acrylic	<b>Warranty</b> 20 years
<b>Secondary Backing</b>	Woven Polypropylene 65% postindustrial content	
<b>Delamination</b>	None after 25,000 cycles (Caster Chair Test) DIN 54324 and ASTM D6962 None after 100,000 cycles (Phillips Chair Tester)	
<b>Moisture Barrier</b>	Modified British Spill Test*	

\* Tandus Centiva Technologies test procedure



## ERGOSTEP™



### INTRODUCED IN 1999 BROADLOOM CARPET

**Size**  
12 ft / 3.66 m (width)  
12 ft, 6 in / 3.8 m (width)

**Installation**  
Direct Glue

- Product Benefits**  
Good rollability • Cushion comfort • Reduces fall impact • Extends product life • Minimizes edge ravel • Impedes moisture intrusion  
• Enhances acoustics • Enhances thermal properties • Low VOC emissions • Biobased content uses ingredients from soy bean oil  
• Complies with CRI Green Label Plus standards

Tandus Centiva	Product Attributes

Tandus Centiva	Product Specifications	
<b>Product Size</b>	12 ft / 3.66 m (width)	<b>Cushion Density</b> 18 lbs/cu ft
	12 ft, 6 in / 3.8 m (width) (style specific)	<b>Compression Set</b> (% height loss) 10% Max @ 50% (Dow Method)
<b>Primary Tufting Substrate</b>	Woven Polypropylene	<b>Compression Resistance</b> 7 psi, Min @ 25% (Dow Method)
<b>Pre-Coat</b>	Polymeric Binder	<b>Moisture Barrier</b> Modified British Spill Test*
<b>Non-woven Felt</b>	100% postconsumer polyester	<b>Installation</b> Direct Glue
<b>Attached Cushion</b>	High Density Polyurethane Cushion, 30% postconsumer content, 8.6% bio-based content**	<b>Recycled Content</b> 8 - 10% post-consumer content
<b>Cushion Thickness</b>	0.100 (min. inches)	<b>Warranty</b> 10 years
* Tandus Centiva Technologies test procedure		

## CROSSWEAVE® WOVEN TECHNOLOGY



### INTRODUCED IN 1964 WOVEN

**Size**  
12 ft / 3.66 m (width)

**Installation**  
Direct Glue

- Product Benefits**  
Excellent rollability • Traditional, elegant appearance • Backing yarns and face fiber are one inseparable unit • Assembled backing structure •  
Loops are precision-formed • No delamination • No edge ravel • No zippering • Precise patterning • Low VOC emissions • Complies with CRI  
Green Label Plus standards

Tandus Centiva	Product Attributes

Tandus Centiva	Product Specifications	
<b>Product Width</b>	12 ft / 3.66 m (width)	
<b>Woven Backing</b>	Weft Yarns, Polypropylene / Polyester (Double Inserted)	
<b>Finish Coat</b>	Warp Yarns Premium Synthetic Latex	
<b>Installation</b>	Direct Glue	
<b>Warranty</b>	15 years	



## CROSSCUSHION® WOVEN



### INTRODUCED IN 1985 WOVEN

**Size**  
12 ft / 3.66 m (width)

**Installation**  
Direct Glue

**Product Benefits**  
Excellent rollability • Meets Modified British Spill Test • Cushion comfort • Reduces fall impact • Extends product life • Minimizes edge ravel • Impedes moisture intrusion • Enhances acoustics • Enhances thermal properties • Low VOC emissions • Complies with CRI Green Label Plus standard

Tandus Centiva	Product Attributes
 WARRANTY 15 YEAR	 ROLLABILITY GOOD
 MOISTURE MODIFIED BRIT. SPILL TEST	 CUSHION CUSHION
 RECYCLED CONTENT	 RECYCLED CONTENT

Tandus Centiva	Product Specifications	
<b>Product Size</b>	12 ft / 3.66 m (width)	<b>Compression Resistance</b> 7 psi, Min @ 25% (Dow Method)
<b>Woven Backing</b>	Polypropylene / Polyester	<b>Moisture Barrier</b> Modified British Spill Test*
<b>Pre-Coat</b>	Polymeric Binder	<b>Installation</b> Direct Glue
<b>Non-woven Felt</b>	100% post-consumer polyester	<b>Recycled Content</b> 8-10% post-consumer content
<b>Attached Cushion</b>	High Density Polyurethane Cushion, 30% postconsumer content, 8.6% bio-based content**	
<b>Cushion Thickness</b>	0.100 (min. inches)	<b>Warranty</b> 15 years
<b>Cushion Density</b>	18 lbs/cu ft	
<b>Compression Set (% height loss)</b>	10% Max @ 50% (Dow Method)	
		* Tandus Centiva Technologies test procedure

## WARRANTY INFORMATION

**POWERBOND® CUSHION** Non-prorated lifetime limited warranty covers excessive surface wear, product delamination, edge ravel, zippering and resiliency loss of the backing when properly installed and maintained according to Tandus Centiva's approved procedures.

**POWERBOND® MEDFLOOR®** Non-prorated lifetime limited warranty covers excessive surface wear, product delamination, edge ravel, zippering and resiliency loss of the backing when properly installed and maintained according to Tandus Centiva's approved procedures.

**POWERBOND® ETHOS® CUSHION** Non-prorated lifetime limited warranty covers excessive surface wear, product delamination, edge ravel, zippering and resiliency loss of the backing when properly installed and maintained according to Tandus Centiva's approved procedures.

**FREEFORM®** Non-prorated lifetime limited warranty covers excessive wear, product delamination, edge ravel, zippering and resiliency loss of the backing when properly installed and maintained according to Tandus Centiva's approved procedures.

**CONSERV® MODULAR** Non-prorated lifetime limited warranty covers excessive wear, product delamination, edge ravel, zippering and resiliency loss of the backing when properly installed and maintained according to Tandus Centiva's approved procedures.

**ER3® MODULAR** Non-prorated lifetime limited warranty covers excessive wear, product delamination, edge ravel, zippering and resiliency loss of the backing when properly installed and maintained according to Tandus Centiva's approved procedures.

**ETHOS® MODULAR** Non-prorated lifetime limited warranty covers excessive wear, product delamination, edge ravel, zippering and resiliency loss of the backing when properly installed and maintained according to Tandus Centiva's approved procedures.

**FLEX-AIRE® CUSHION MODULAR** Non-prorated lifetime limited warranty covers excessive wear, product delamination, edge ravel, zippering and resiliency loss of the backing when properly installed and maintained according to Tandus Centiva's approved procedures.

**SUPER-LOK™** 10-year limited performance warranty against abrasive wear, edge ravel and delamination on all products which are first quality and have been properly installed in accordance with Tandus Centiva's published guidelines, those of the most recent CRI-104 "Standard for Installation of Commercial Carpet," and maintained in indoor commercial installations.

**LIFELONG®** 20-year limited performance warranty covers defects in workmanship, materials and construction, product delamination and edge ravel on all products which are first quality and have been properly installed in accordance with Tandus Centiva's guidelines, and those of the most recent CRI-104 "Standard for Installation of Commercial Carpet," and maintained in indoor commercial installations.

**ERGOSTEP™** 10-year limited performance warranty on all products which are first quality and have been properly installed in accordance with Tandus Centiva's published guidelines, and those of the most recent CRI-104 "Standard for Installation of Commercial Carpet," and maintained in indoor commercial installations.

**CROSSWEAVE®** 15-year warranty covers static, zippering and edge ravel when installed in accordance with Tandus Centiva's published guidelines, and those of the most recent CRI-104 "Standard for Installation of Commercial Carpet," and maintained in indoor commercial installations.

**CROSSCUSHION® WOVEN** 15-year limited performance warranty on all products which are first quality and have been properly installed in accordance with Tandus Centiva's published guidelines, and those of the most recent CRI-104 "Standard for Installation of Commercial Carpet," and maintained in indoor commercial installations.

For full warranty information visit [tandus-centiva.com](http://tandus-centiva.com).

## GLOSSARY OF TERMS

**ACTIONBAC** Secondary backing of a woven synthetic fabric attached to the primary backing or pre-coat.

**MODIFIED BRITISH SPILL TEST** Mixture of a dye and distilled water applied to the surface of carpet and left for 24 hours to witness whether the water has flowed through to the secondary backing. A product which has not allowed a significant amount of water to flow through after 24 hours has passed the test.

**BROADLOOM** A term used to denote carpet produced in widths wider than 6 feet. Broadloom is usually 12 feet wide, but may also be 12' 6" wide.

**CLOSED-CELL CUSHION** Cushion layer with a closed-cell molecular structure for air and moisture impermeability and resiliency.

**CLOSED LOOP RECYCLING** Concept of sustainability that refers to recycling a used product back into a similar product such that every element in the original product is reclaimed and utilized.

**CONSUMER WASTE** Material(s) disposed into a waste stream (land filled, incinerated, etc.) after being used by a consumer.

**CRI** Carpet & Rug Institute, Dalton, GA.

**CUSHION** Any kind of material placed under flooring to provide softness and adequate support when it is walked upon. Also referred to as a "padding" or "underlay", although "cushion" is the preferred term. Cushion provides a softer feel underfoot and provides added acoustical and insulation benefits, and longer wear life for the face fibers. Tandus Centiva's cushion is fused to pre-coated products in the Powerbond process.

**DIRECT GLUE** An installation method whereby the carpet is adhered to the floor with wet adhesive either troweled, rolled or sprayed onto the sub-floor surface.

**EDGE RAVEL** The fuzzing or piling of carpet yarn at the edge of a product, usually at the seam(s).

**FEDERAL TRADE COMMISSION (FTC)** A federal agency with regulatory and enforcement authority, the FTC works to enhance the smooth operation of the marketplace by eliminating acts or practices that are unfair or deceptive. In general, the FTC's efforts are directed toward stopping actions that threaten consumers' opportunities to exercise informed choices.

**GREEN LABEL PLUS** A label that is placed on products that have met certain criteria and have been approved by CRI's indoor air quality protocol. There are "Green Label Plus" testing programs in three categories: 1) carpet, 2) cushion, and 3) adhesive.

**HIGH DENSITY POLYMERIC BARRIER SYSTEM** The finish of the secondary backing to resist moisture gain in the carpet secondary backing.

**IAQ** Indoor Air Quality

**IMPERMEABLE** Not allowing entrance or passage: impenetrable.

**IMPERVIOUS** Allows entrance or passage with little or no damage to product.

**INDUSTRIAL WASTE** Material diverted from the waste stream during a manufacturing process that never reached the end-user.

**INTERMEDIATE SYSTEM** The layer of material(s) between the tufted web or pre-coat and the secondary backing of carpet.

**NON-PRORATED** Usually referring to warranties; where the liability or value is not divided or distributed by the number of years the product has provided useful service but instead the liability is for the full term of warranty at full value.

**POLYMERIC** Of, relating to, or composed of a polymer.

**POLYPROPYLENE** A man-made thermoplastic fiber within the Olefin family. A very lightweight fiber that resists deterioration from chemicals, mildews, rot and weather. When used as face fiber, polypropylene has a low melting point and can become easily abraded in high traffic and has static and piling problems.

**POSTCONSUMER MATERIAL** A material or finished product that has served its intended use and has been diverted or recovered from waste destined for disposal, having completed its life as a consumer item. Postconsumer material is a part of the larger category of recovered materials. Reference: Executive Order 13423 Definitions.

**POSTINDUSTRIAL (PRECONSUMER)** Refers to waste materials generated from an industrial or manufacturing process but does not include materials and by-products generated from, and commonly reused within, an original manufacturing process.

**PRE-COAT** Binding agent applied to the back of the tufting blanket to reinforce the tufted pattern, secure the tufted stitch and provide a compatible surface for adhesive or secondary or intermediate backing or cushion.

## GLOSSARY OF TERMS

**PRIMARY BACKING** Synthetic woven or non-woven fabric used as the material to stitch into and anchor stitches when making the tufting blanket and wear layer.

**PVB** Polyvinyl butyral (PVB) is a non-chlorinated thermoplastic film most often found in laminated safety glass. When layered between glass sheets, this highly durable interlayer holds glass fragments together and continues to provide resistance. Among its many benefits are security, sound reduction, solar energy and UV control, weather and natural disaster protection, low visible distortion and design and installation versatility. PVB can also be found in inks, automotive underbody coatings and abrasion resistant straps.

**PVC** A thermoplastic polymer, polyvinyl chloride (PVC), often referred to as vinyl, is made by combining ethylene and chlorine. PVC is a material used in pipes to keep disinfected drinking water safe, food packaging, child safety and electrical products, as well as medical products, windows, furniture and siding.

**RECYCLABILITY** The ability of a product or material to be recovered from, or otherwise diverted from, the solid waste stream for the purpose of recycling. Reference: Executive Order 13423 Definitions.

**RECYCLABLE** To extract and reuse (useful substances recovered from waste); to recondition and adapt to a new use or function.

**RECYCLED CONTENT** Waste materials and by-products that have been recovered or otherwise diverted from the solid waste stream, either during the manufacturing process (postindustrial), or after consumer use (postconsumer).

Post-industrial material does not include materials normally reused by industry within the original manufacturing process.

**REVOLUTIONARY SYSTEM (RS)** Adhesive that is pre-applied and cured during manufacturing. RS is a peel and stick installation method. It is one of the lowest VOC adhesive systems in the industry.

**ROLLABILITY** The ability to move (or roll) pieces of furniture such as chairs or beds on flooring.

**SCS GLOBAL SERVICES** An internationally recognized, neutral third-party environmental certification organization that independently verifies the accuracy of environmental claims on products.

**SECONDARY BACKING** A secondary backing or cushion is attached to the tufting blanket to provide further pile-yarn stability, durability, comfort underfoot and dimensional stability to the carpet structure.

**SYNTHETIC LATEX** A man-made alternative to natural rubber latex such as SBR.

**THERMOPLASTIC** There are two general classes of polymers based on their behavior when exposed to heat, thermoplastics and thermosets. Thermoplastic polymers soften (melt) when exposed to heat and can be formed or shaped when in the softened state. When cooled to room temperature, the polymer returns to its original, rigid condition - becoming usable as a formed article. This type of polymer can be readily recycled because each time it is reheated it can again be reshaped or formed into a new article. Source: Society of Plastic Engineers.

**THERMOSET** A polymer that solidifies or "sets" irreversible when heated. This property is usually associated with a cross-linking reaction of the molecular constituents. Once formed, this material does not soften or melt when heated and cannot be reshaped or formed into a new article.

**TUFTING BLANKET** The finished tufted face yarn and the primary backing.

**URETHANE** The name of a group of organic chemical compounds or resins built from isocyanate, a very reactive material that liberates gas during reaction to produce foams of various types. Urethane cushions are "thermoset" polymers.

**WARP** A weaving term for yarns that run lengthwise in woven fabrics and carpets. Warp yarns are usually delivered to the loom from a beam, a large spool with hundreds of ends of yarn wound on it, mounted behind the loom.

**WEFT** The yarn that runs widthwise in woven cloth or carpet, interlacing with the warp yarns.

**WOVEN CARPET** Is created on looms by simultaneously interlacing face yarns and backing yarns into a complete product, thereby eliminating the need for a secondary backing. A small amount of latex-back coating is usually applied for bulk.

**VOC** Volatile Organic Compound.



—  
NOTES

—  
NOTES





# Tandus Centiva

tandus-centiva.com 800.248.2878  
Powerbond® Freeform® Modular Broadloom Woven LVT



# BACKINGS



THE ULTIMATE  
FLOORING EXPERIENCE