

Tandus Centiva

PLANKS

AVAILABLE IN THE FOLLOWING STYLES:

CHANGE II	2
DOT MATRIX	5
HALFTONE	6
CANOPY	9
HAYWIRE	10
LONGITUDE	12
WINWOOD + METRI	15
ASCEND + EVANESCE	18
AVANT + LLANO FIRMA II	21
ELEMENT	25
STACK 9	26
FACTORY FLOOR II + NONCONFORM II	29
DV8	30

---

PRODUCT INFORMATION:	32
----------------------	----





When you create, what do you reach for? A pen and paper? A paintbrush? A camera?

Alone, they are simply tools.  
In your hands, they become  
artful expressions.

With Tandus Centiva's new plank  
sizes, we bring you a new tool  
to add to your repertoire.

**DOT MATRIX**

*Submerge • 9' x 36', Herringbone*

*Azuline • 9' x 36', Herringbone*

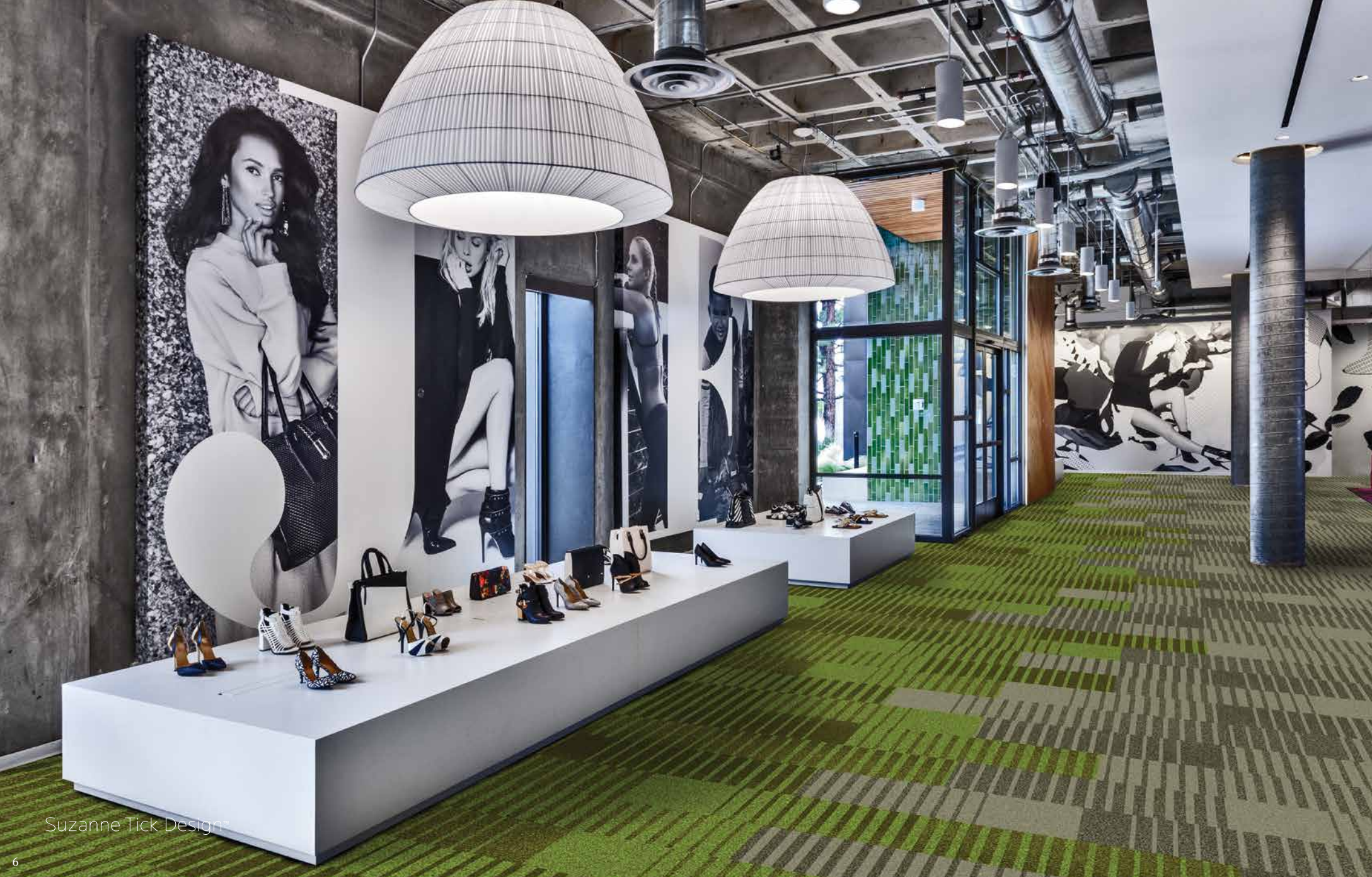
*Circuitboard • 9' x 36', Herringbone*

*Magnetized • 9' x 36', Herringbone*

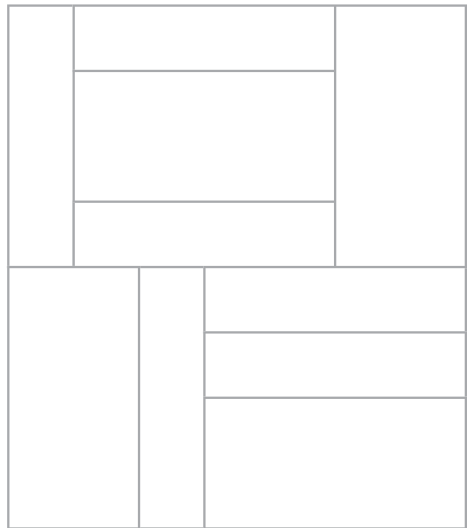
*Solder • 9' x 36', Herringbone*



Suzanne Tick Design™



Modular flooring has more capabilities than ever before to form flooring designs that are both functional and inspirational. So let your imagination loose, find your tools and let's create.



**CANOPY**

*Coastal Fog • 9'x36', 18'x36', Random*

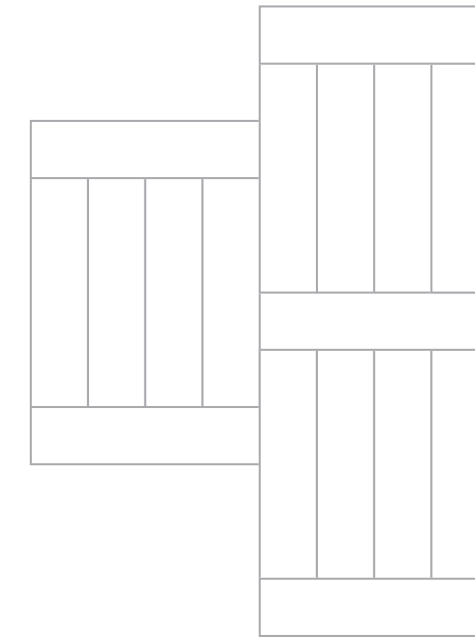
*Volcanic Winter • 9'x36', 18'x36', Random*

*Quartzite Mood • 9'x36', 18'x36', Random*

Suzanne Tick Design™



The 9"x36" plank allows for greater flexibility in designing the floor plane.





Color, pattern and texture variations can set apart spaces without barriers.



**WINWOOD**

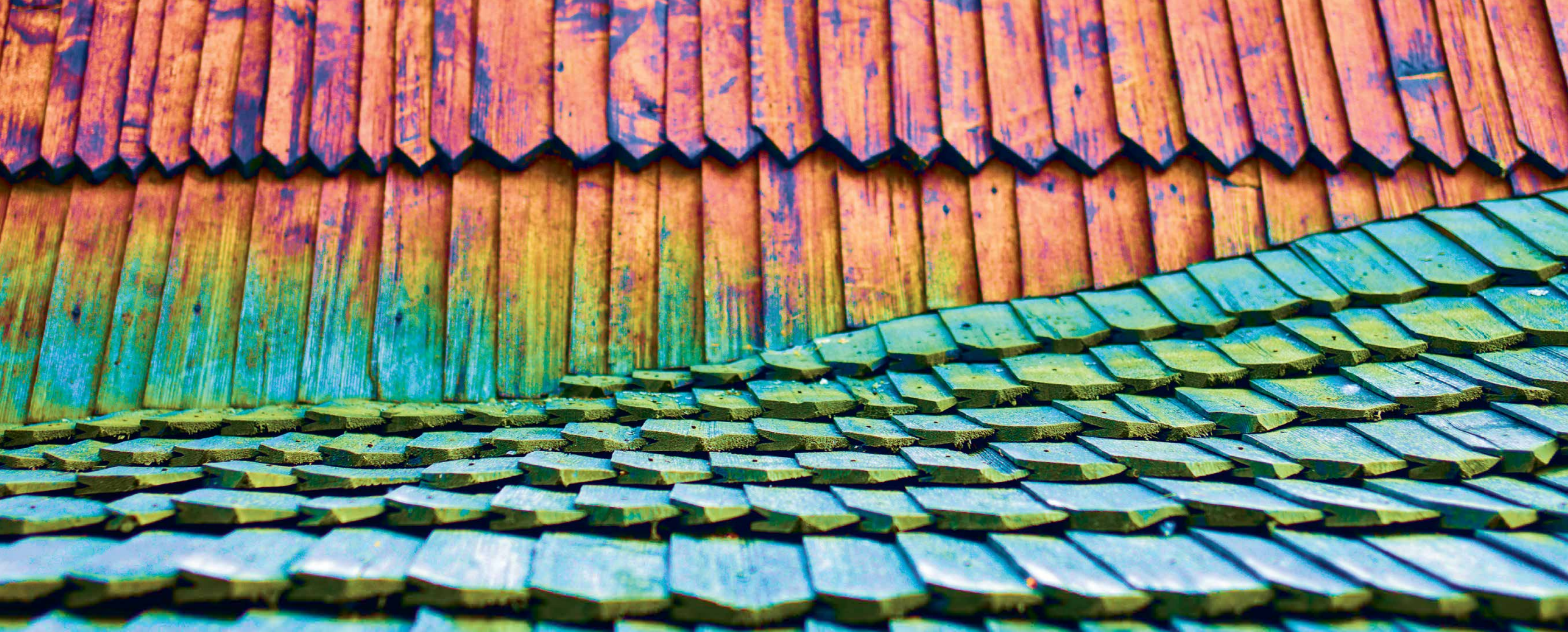
*Coastal Fog • 9'x36'*

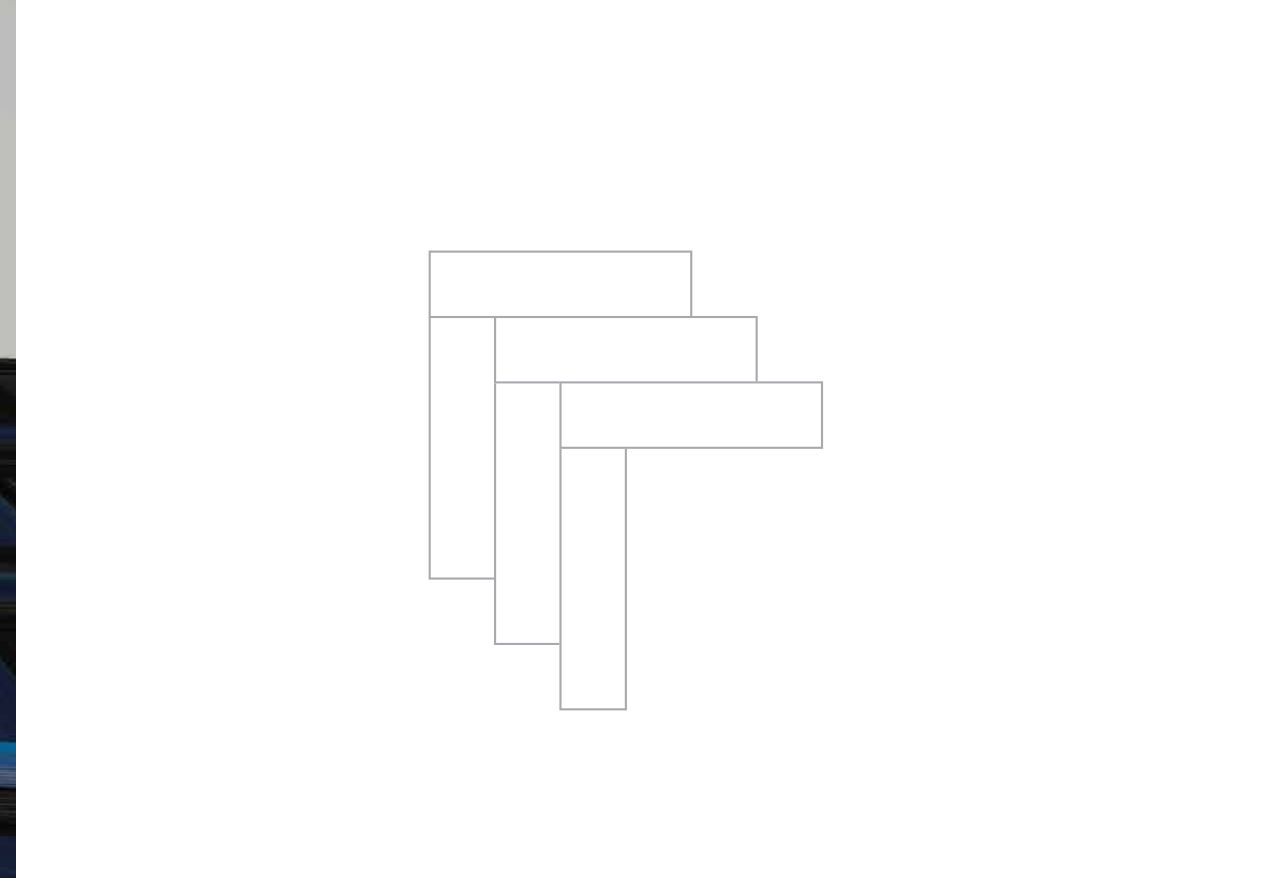
*Quartzite Mood • 9'x36'*

**METRI**

*Persimmon • 9'x36'*

*Suzanne Tick Design™*





**EVANESCE**  
*Maximum Blue • 9' x 36', Herringbone*

**ASCEND**  
*Licorice • 9' x 36', Herringbone*  
*Open Ocean • 9' x 36', Herringbone*

Our 9"x36" planks,  
along with other modular tile sizes,  
are quick and easy to install  
with TanduTape+™.

**LLANO FIRMA II**

*Nocturne • 9" x 36", Vertical Ashlar*

Suzanne Tick Design™

**AVANT**

*Deconstructed • 9" x 36", Vertical Ashlar*





A change in direction  
can sometimes provide  
a new perspective.

Combine sizes for variations  
in pattern designs.

9"x36", 18"x36", 24"x24", 36"x36"



**ELEMENT**

*Seattle Haze • 24' x 24'*

*December Light • 9' x 36'*



Create efficient traffic flow through spaces by designing wayfinding with planks.

**STACK 9**

*Black Aluminium* • 9'x36', Horizontal Ashlar, Quarter Dropped

*Spray Bloom* • 9'x36', Horizontal Ashlar, Quarter Dropped

Design is an opportunity  
to continue telling the story,  
not just to sum everything up.

TATE LINDEN

**FACTORY FLOOR II**

*Silver Studio • 9' x 36', Vertical Ashlar*

**NONCONFORM II**

*Silver Studio • 9' x 36', Vertical Ashlar*







Design is a plan for arranging elements in such a way as to best accomplish a particular purpose.

CHARLES EAMES

DV8

Peace Frog • 9' x 36'

Our plank size options come with **ethos**<sup>®</sup> backing, a PVC-alternative made from the film in postconsumer windshields and safety glass.

ethos<sup>®</sup> planks have 27-52% overall recycled content with at least 27% postconsumer content, and are 100% recyclable through our Restart<sup>®</sup> Program.

Tandus Centiva is the first American modular carpet manufacturer to be **Cradle to Cradle Certified**<sup>™</sup> Silver v3.0 for ethos<sup>®</sup>.

Use with **TandusTape+**<sup>™</sup> for easy installation of floating floors.

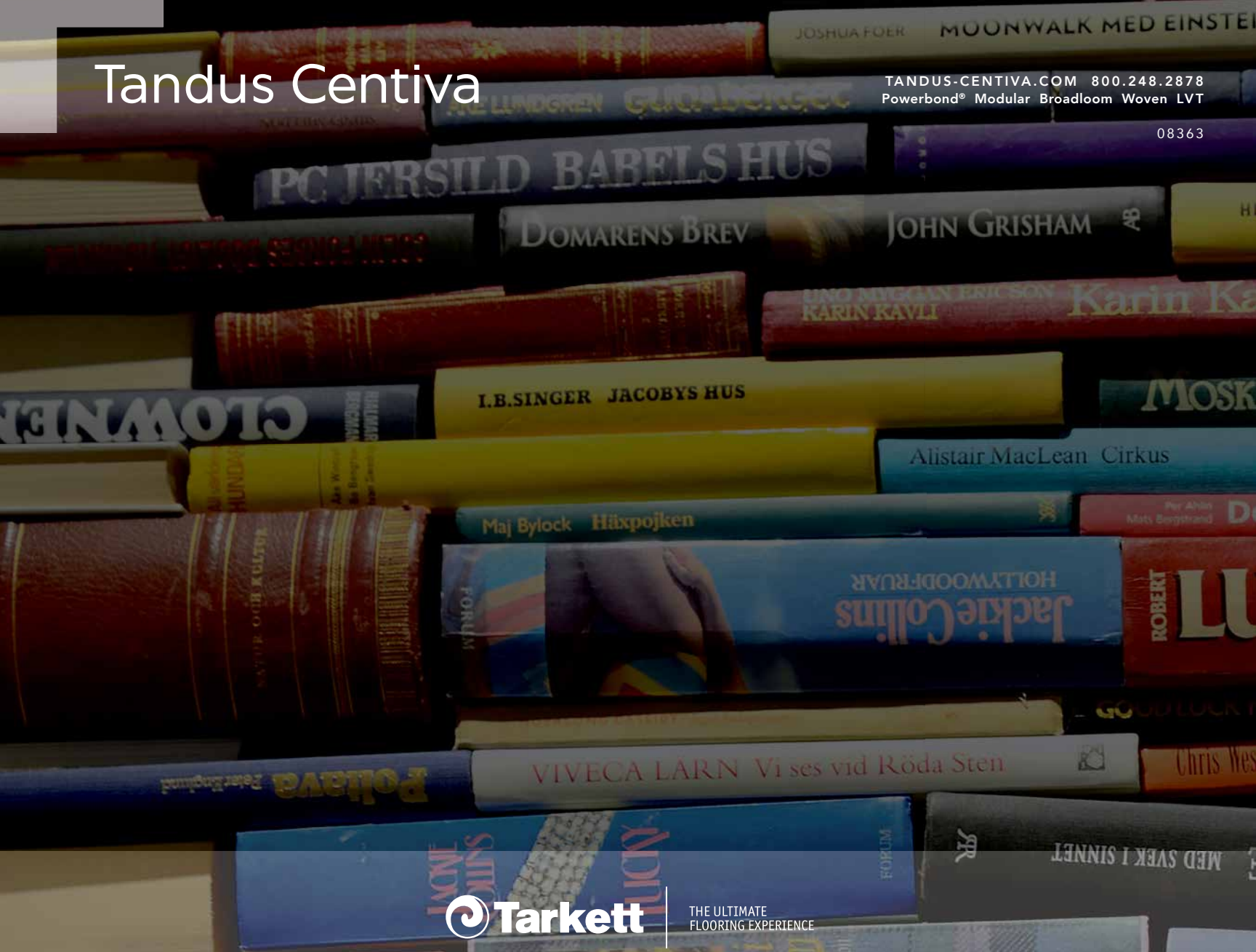
- Can be installed at MVER ≤ 15.0 lbs., PH ≤ 11.0 and In-Situ/RH ≤ 98%
- Odor free
- Sticks to the tile, not the floor
- Low VOCs

ELDON SPELETS HARK...

# Tandus Centiva

TANDUS-CENTIVA.COM 800.248.2878  
Powerbond® Modular Broadloom Woven LVT

08363



THE ULTIMATE  
FLOORING EXPERIENCE