

# Tandus Centiva

DESIGNED TO INSPIRE.



THE ULTIMATE  
FLOORING EXPERIENCE

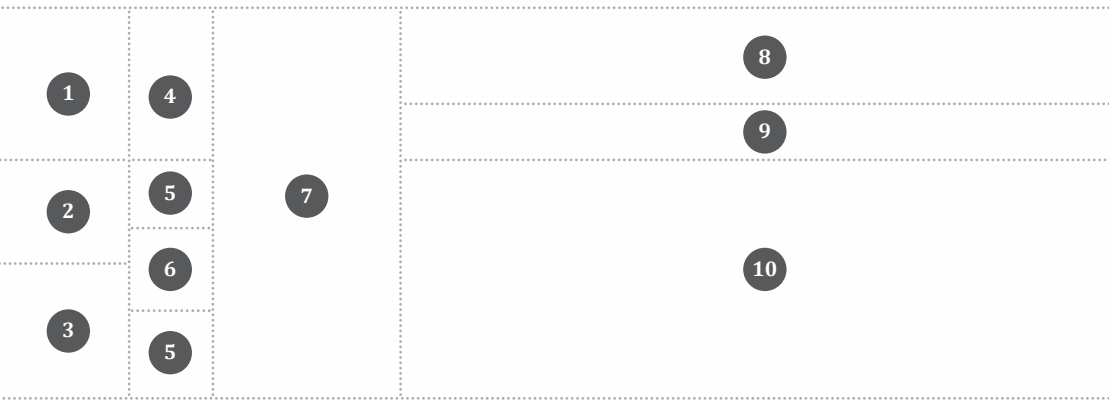


---

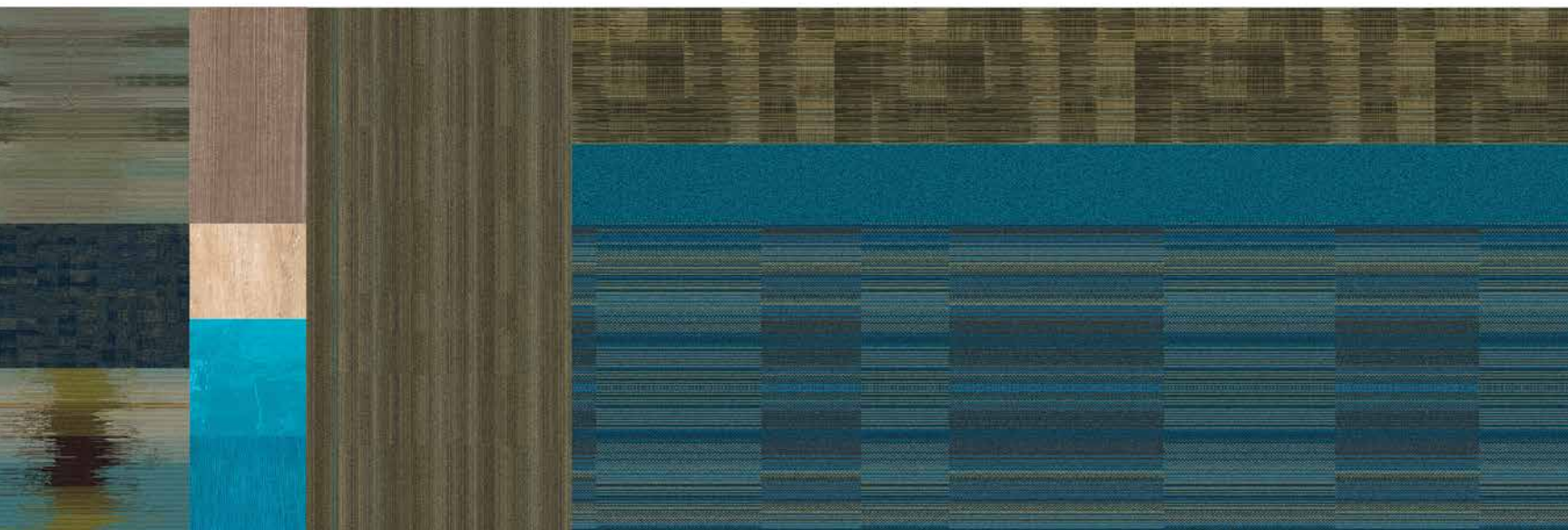
*“Overwhelmingly, teachers recognize the relationship between interior design and academic achievement.”<sup>1</sup>*

---

<sup>1</sup>“Executive Summary,” National Survey of Public School Teachers, Prepared for The Carpet and Rug Institute and the International Interior Design Association Foundation. Comp. Beth Shapiro & Associates. 2001. Print.

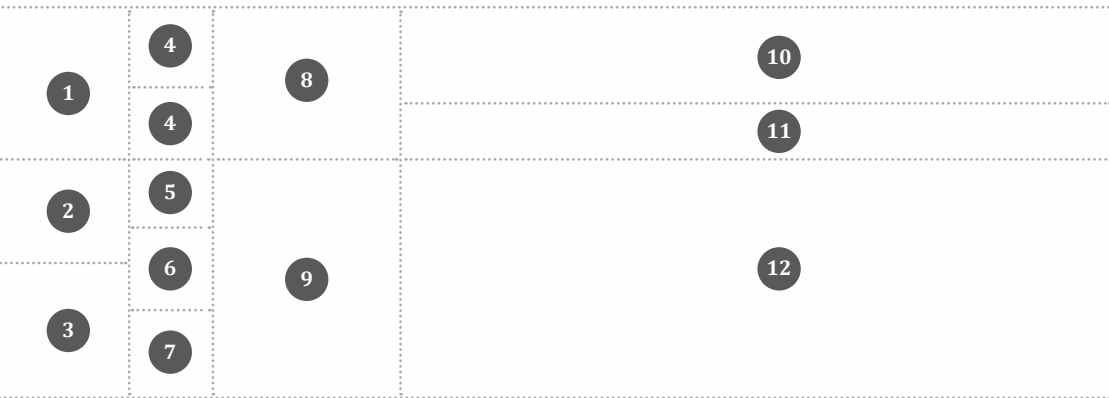


- 1 DV8 Stardust
- 2 AFTERMATH II Mediterranean
- 3 CHANGE II Plastic Inevitable
- 4 VENUE ABSTRACT LVT Tread Grayish
- 5 SUBSTRATE LVT Laguna
- 6 CORAL REEF LVT Aruba
- 7 EVANESCE Royal Sand
- 8 MAELSTROM Greenway
- 9 PLEXUS COLOUR IV Jamaican Lake
- 10 CANDOR Caribe



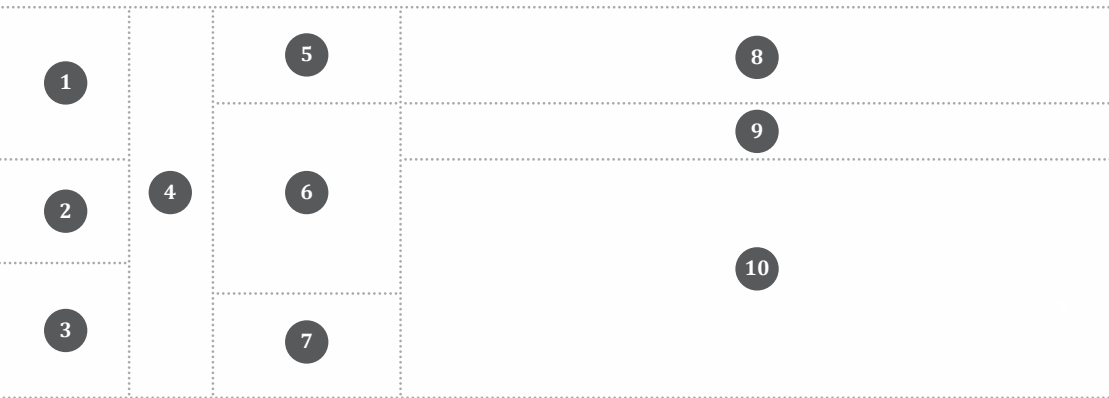
“Design is about creating spaces for people to enjoy and, of course, creating moments where you elevate the spirit.”

CAMERON SINCLAIR

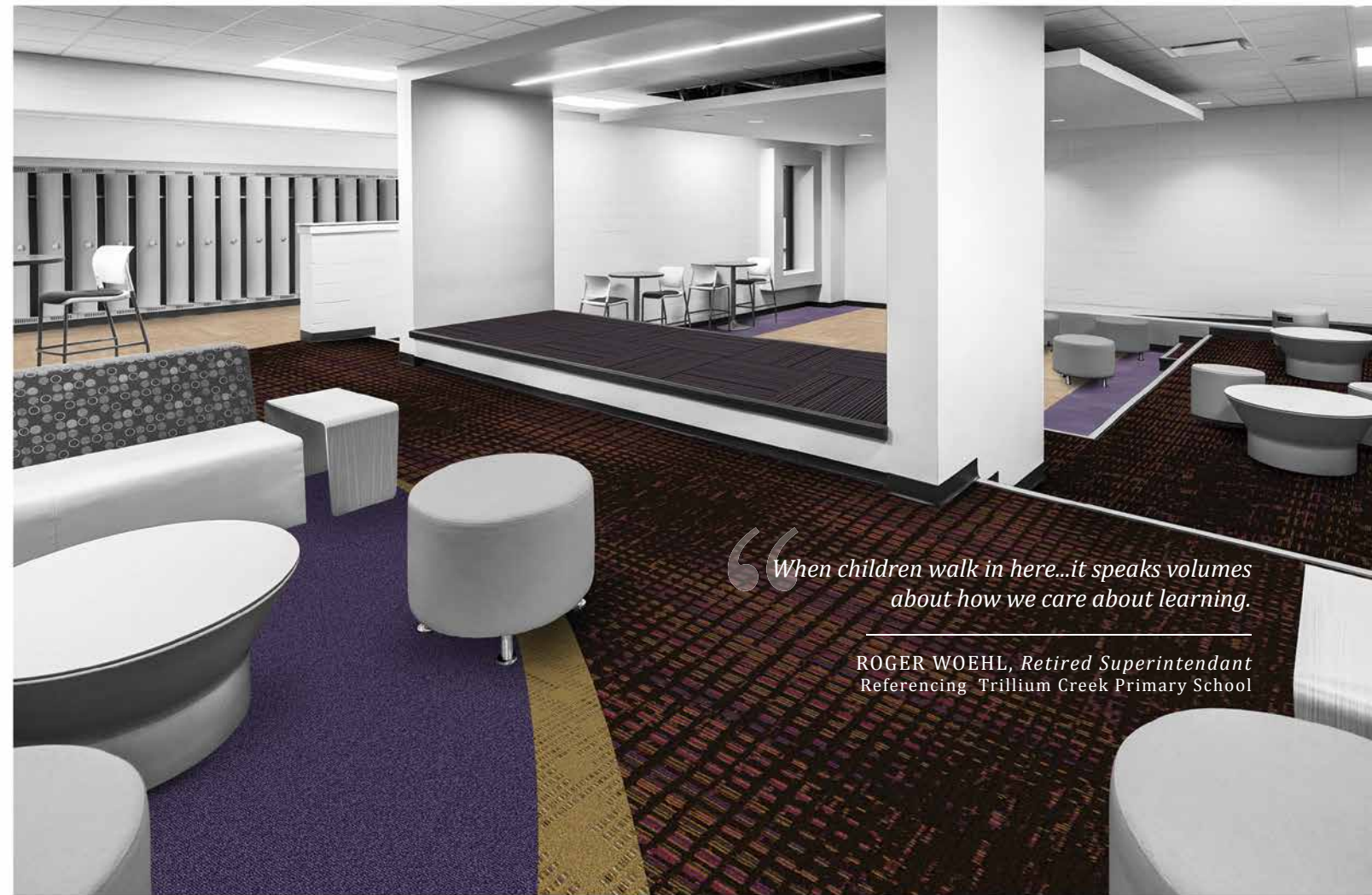
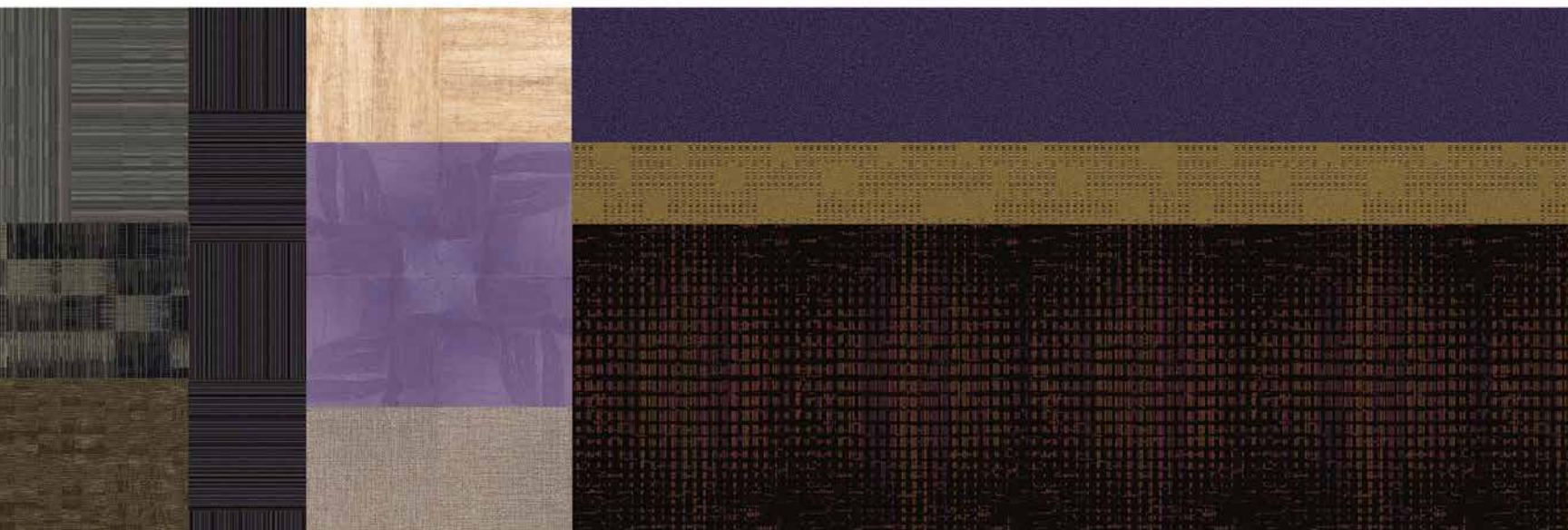


- 1 **STREET LIFE** *Brown Derby*
- 2 **DV8** *After Midnight*
- 3 **CANDOR** *Licorice*
- 4 **NUGRAIN LVT** *Gunmetal*
- 5 **SUBSTRATE LVT** *Domino*
- 6 **VICTORY MAGICS LVT** *Cabernet*
- 7 **VICTORY CORAL REEF LVT** *Black Pearl*
- 8 **CROSSWORK** *Sangria Hour*
- 9 **CITY WALK** *Lights Out*
- 10 **CONSEQUENCE** *Black Hole*
- 11 **STACK 9** *Burgundy Road*
- 12 **CARTOGRAPHY** *Edge Shadow*





- 1 EVANESCE *Space Grey*
- 2 MAELSTROM *University*
- 3 AFTERMATH II *Mosaic*
- 4 GLACIAL STRIAE *Amethyst Floe*
- 5 CROSSWEAVE LVT *Linen*
- 6 VICTORY CORAL REEF LVT *Bay Grape*
- 7 PORCELAIN *Mousey*
- 8 PLEXUS COLOUR IV *Purple Haze*
- 9 ACCENTUATE *Copal*
- 10 NOVA *Nebula*



“When children walk in here...it speaks volumes about how we care about learning.”

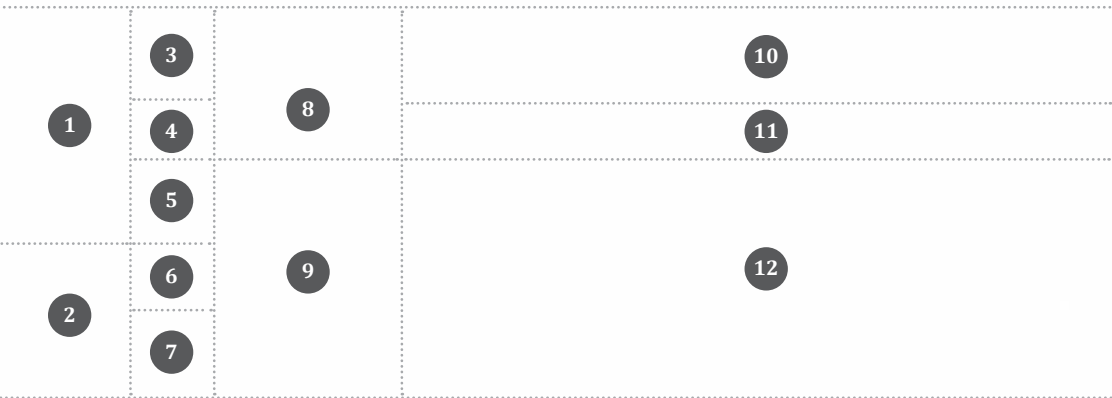
ROGER WOEHL, *Retired Superintendent*  
Referencing Trillium Creek Primary School



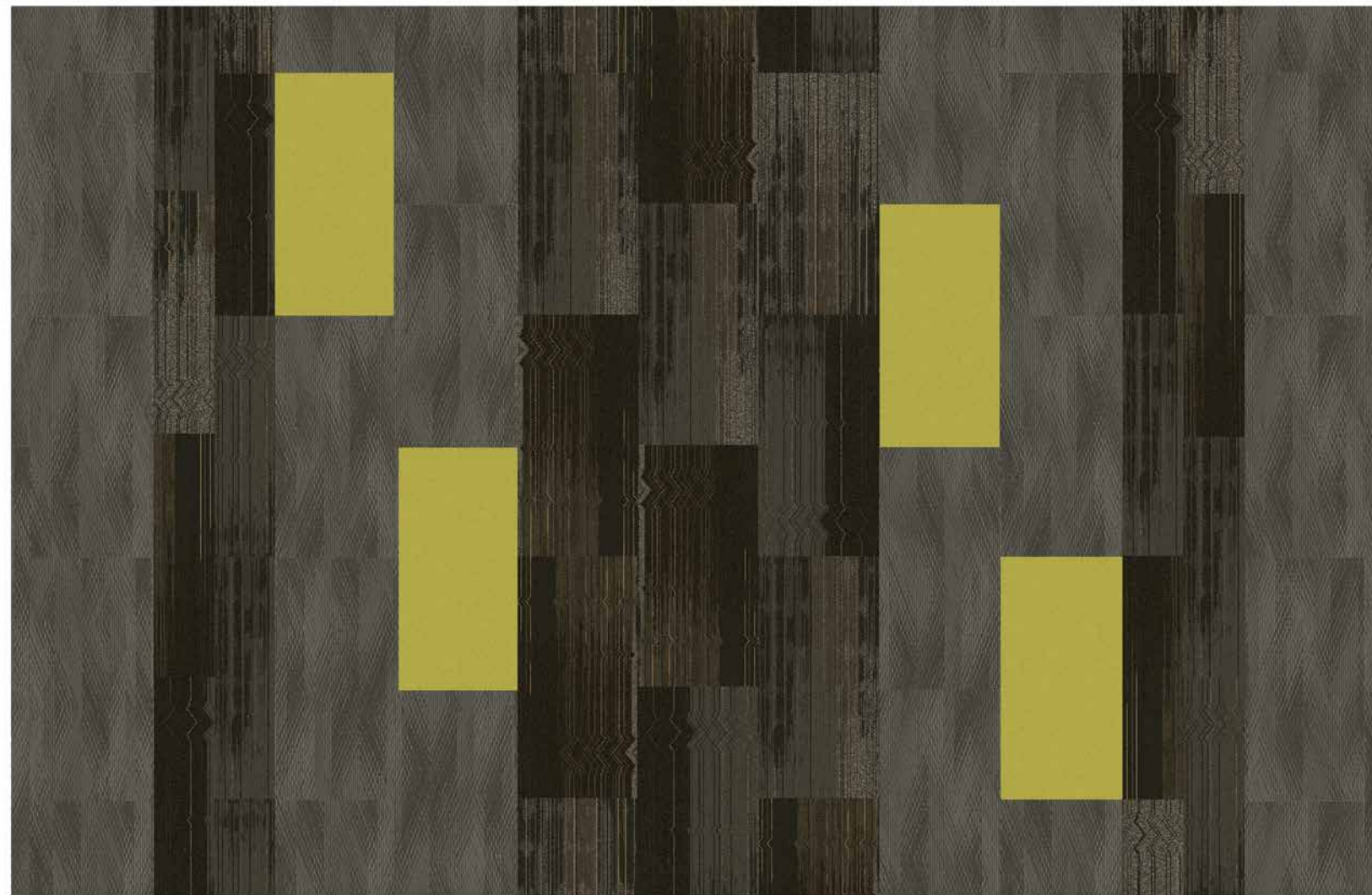
Many product platforms could be used for any application. The chart below represents a guideline based on research of maintenance, acoustics, traffic flow, spills and other factors to aid in flooring selection.

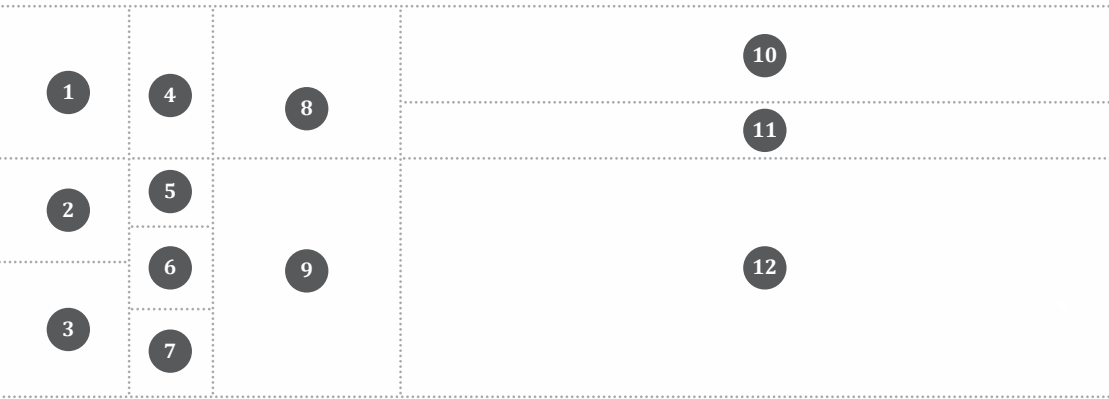
|                          | <br>POWERBOND | <br>MODULAR | <br>BROADLOOM | <br>WOVEN | <br>TILE + PLANK |
|--------------------------|--|--|--|--|---|
| CAFETERIA                | ●  | ○  |  |  | ◆   |
| CLASSROOMS               | ◆  | ●  |  |  | ○   |
| AUDITORIUM               | ◆  | ●  | ○  |  |   |
| ADMINISTRATION           | ◆  | ◆  | ○  | ●  |   |
| LAB                      |  |  |  |  | ◆   |
| CORRIDORS                | ◆  | ○  |  |  | ●   |
| COMMON AREAS             | ◆  | ●  |  |  | ●   |
| MEDIA CENTER/<br>LIBRARY | ◆  | ◆  | ○  | ○  |   |
| ATHLETIC<br>FACILITIES   | ◆  | ●  |  |  | ◆   |

○ = GOOD   ● = BETTER   ◆ = BEST



- 1 NOVA *Terrestrial*
- 2 MAELSTROM *Steel Structure*
- 3 MODERN WOOD LVT *Atlantic Cherry*
- 4 VENUE STONE LVT *Olive*
- 5 PANCHO LVT *Merino*
- 6 SUBSTRATE LVT *Fedora*
- 7 VICTORY MAGICS LVT *Florentine Brass*
- 8 PLEXUS COLOUR IV *French Citrone*
- 9 GLACIAL STRIAE *Ice Fog*
- 10 CANDOR *Royal Sand*
- 11 DV8 *Grey Matters*
- 12 AWRY *Earl Grey*





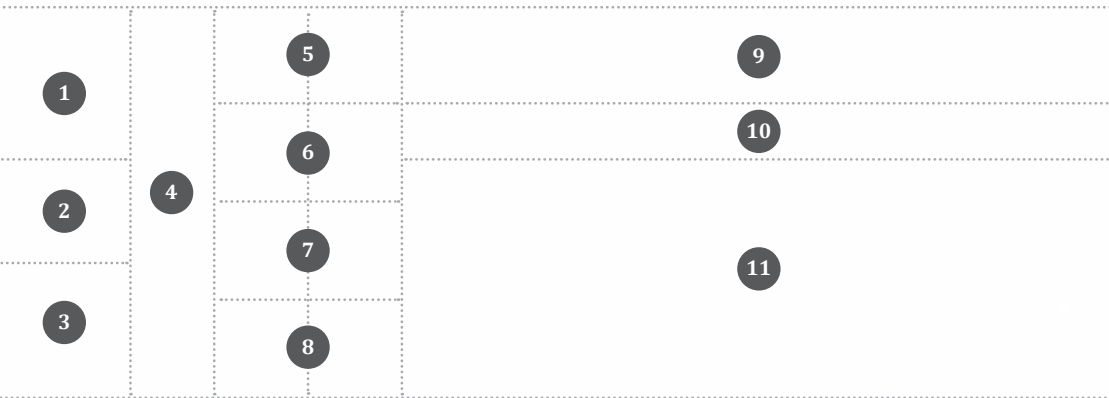
- 1 DV8 Vinyl Record
- 2 MAELSTROM Mercury Retrograde
- 3 AFTERMATH II Flannel
- 4 RAYS LVT Azure
- 5 VICTORY MAGICS LVT Sapphire
- 6 C-STAMPED LVT Ironic
- 7 VICTORY MAGICS LVT Baltic
- 8 CONSEQUENCE Mer
- 9 CROSSWORK Minerality
- 10 CANDOR Open Ocean
- 11 GRAND ASH LVT Saffron
- 12 STACK 9 Waterstone



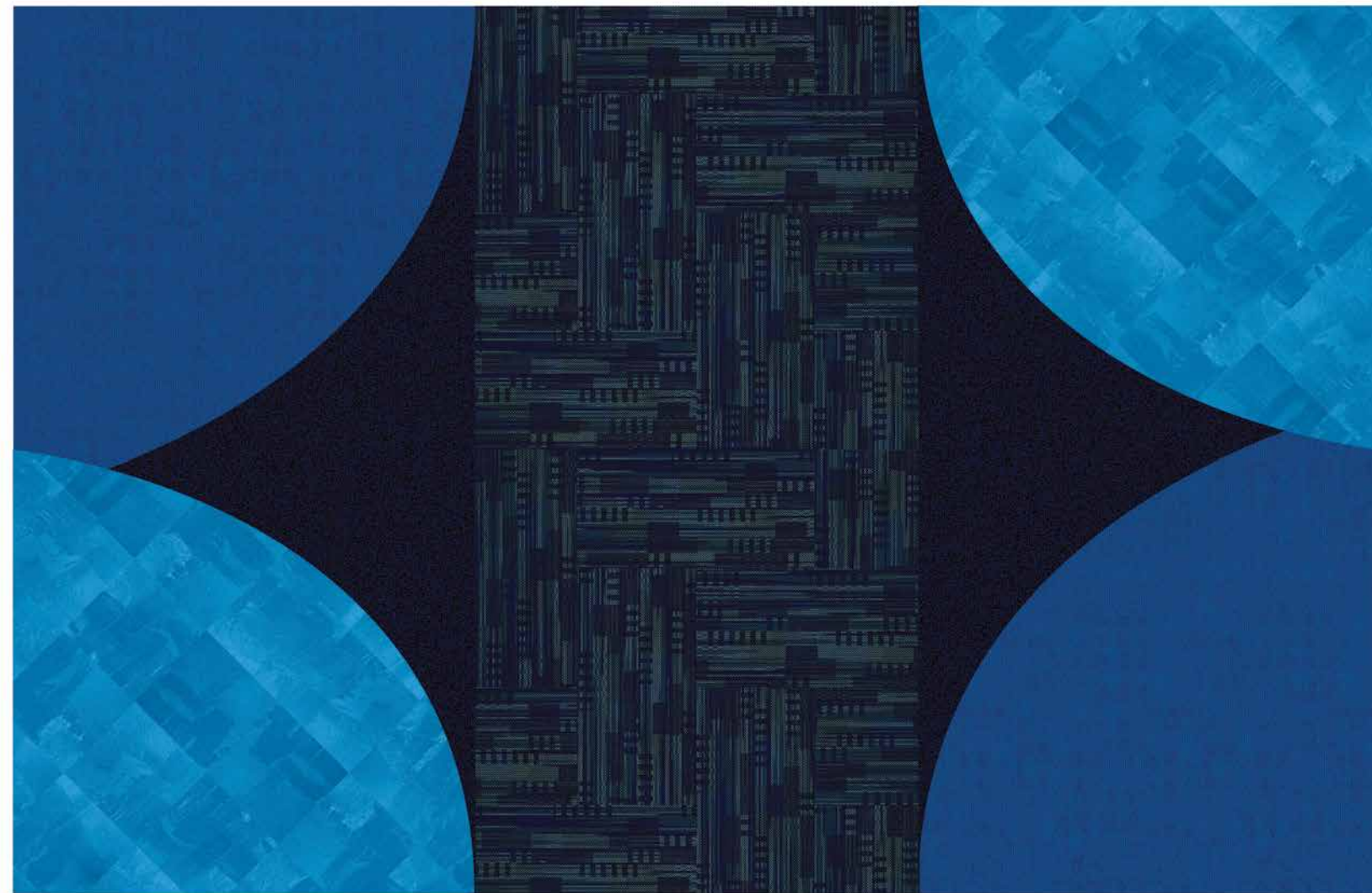
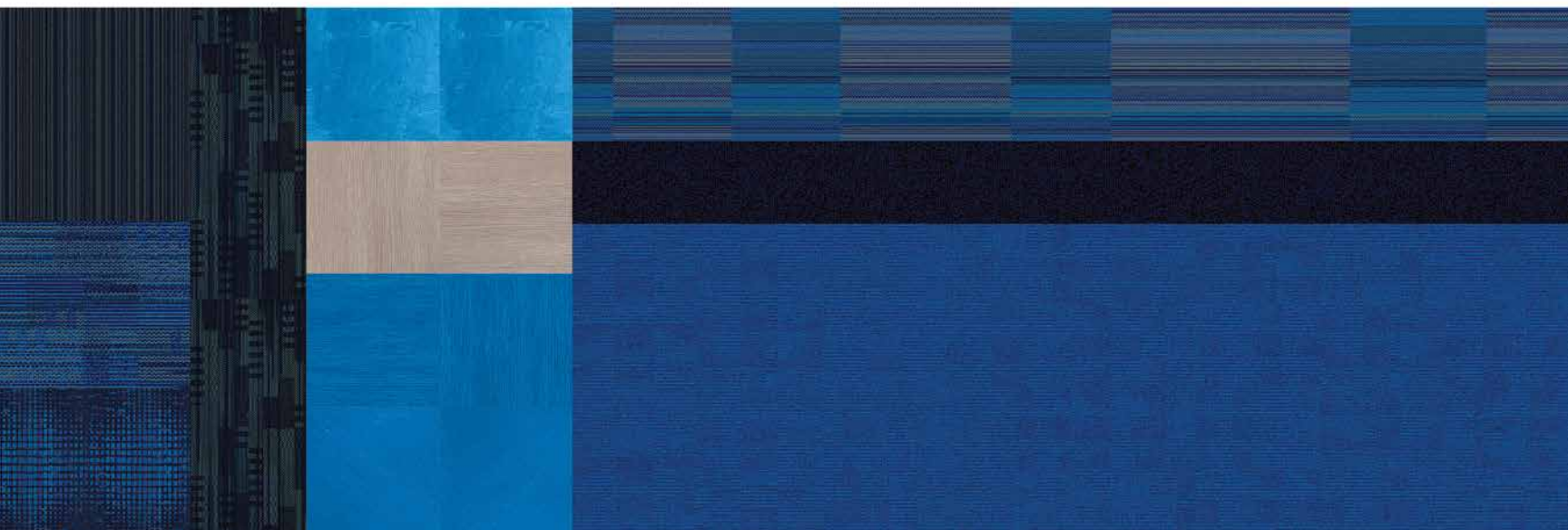
“We shape our buildings. And thereafter, our buildings shape us.”

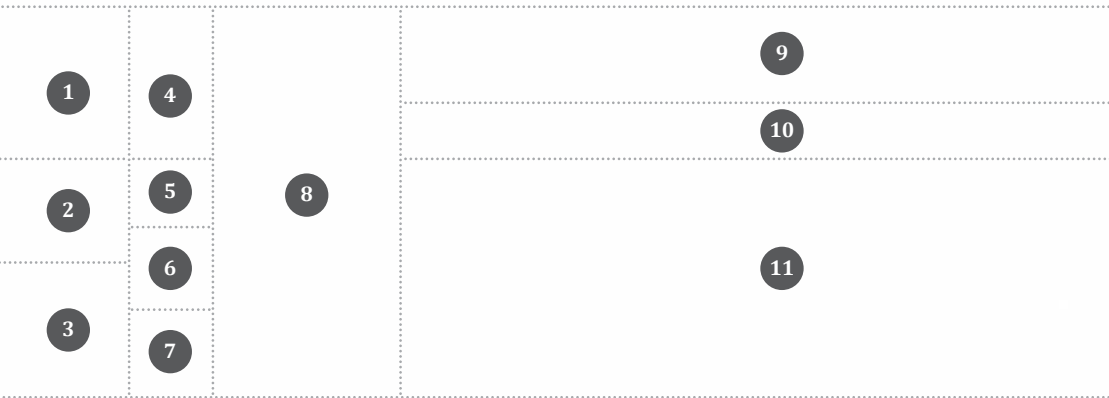
WINSTON CHURCHILL



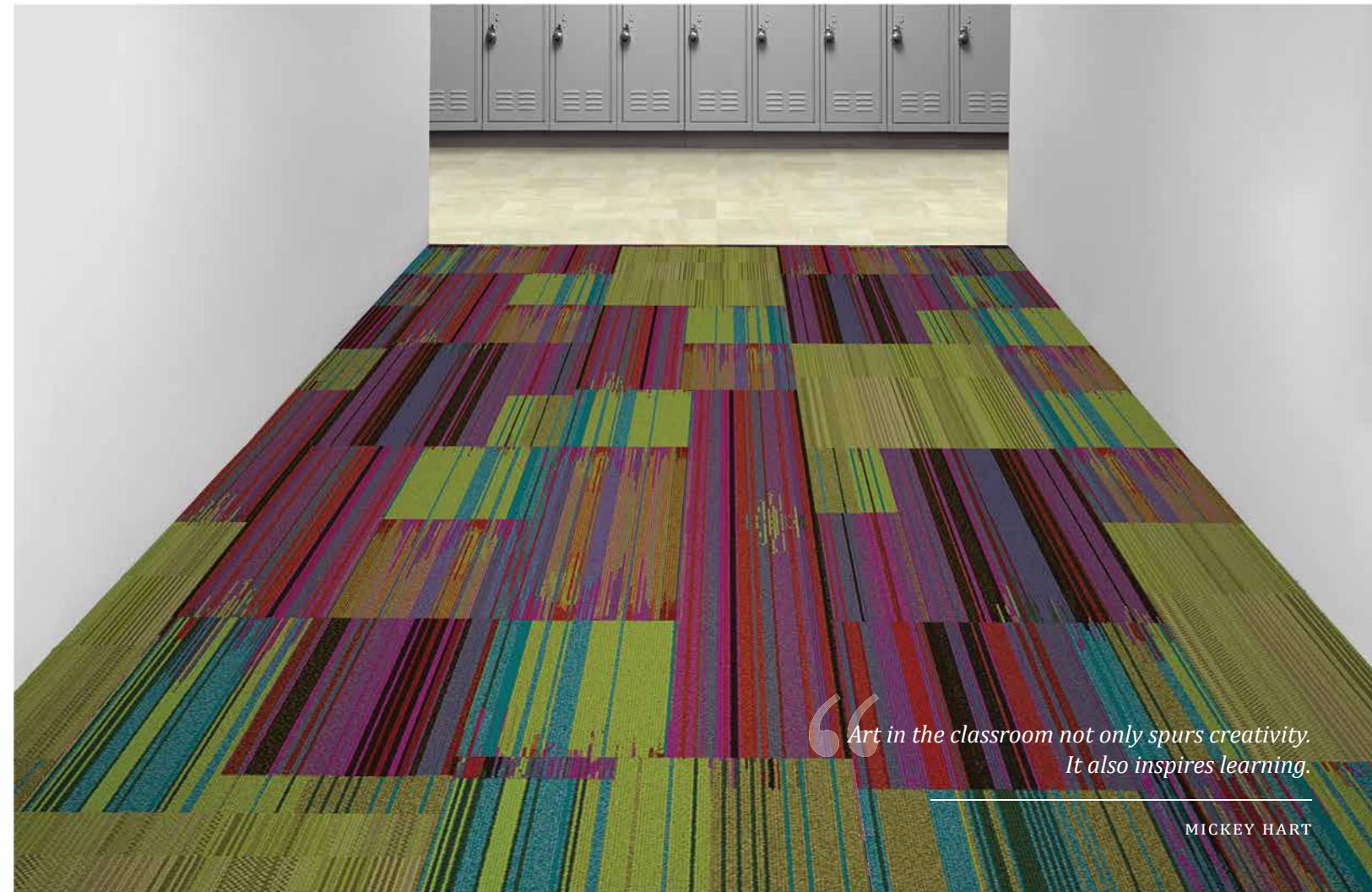
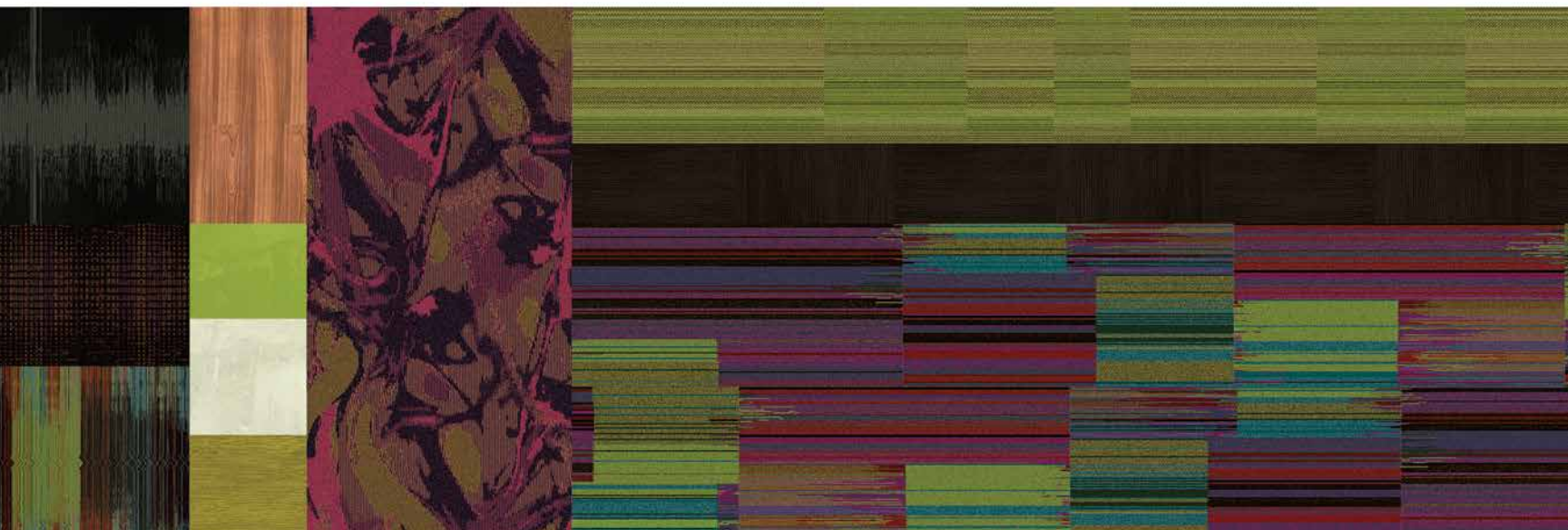


- 1 GLACIAL STRIAE *Arctic Sea*
- 2 CROSSWORK *Blue Hot*
- 3 NOVA *Hydrogen*
- 4 CROSSWORK *Blue Steel*
- 5 VICTORY CORAL REEF LVT *Aquarius*
- 6 NUGRAIN LVT *Sterling*
- 7 NUGRAIN LVT *Peacock*
- 8 CHROMA LVT *Catalina*
- 9 CANDOR *Maximum Blue*
- 10 PLEXUS COLOUR IV *Liberty Blue*
- 11 CONSEQUENCE *Blue Yonder*





- 1 CHANGE II *Midnight Outing*
- 2 NOVA *Nebula*
- 3 DV8 *Voltage*
- 4 CLASSIC PLANK LVT *European Cherry*
- 5 VICTORY CORAL REEF LVT *Kiwi*
- 6 VICTORY CORAL REEF LVT *Pearl*
- 7 NUGRAIN LVT *Droid*
- 8 JACKSON *Umber Accents*
- 9 CANDOR *Limerick*
- 10 NUGRAIN LVT *Jet*
- 11 STACK 9 *Spray Bloom*



“Art in the classroom not only spurs creativity.  
It also inspires learning.”

MICKEY HART



---

*“The essence of interior design will always be about people and how they live.  
It is about the realities of what makes for an attractive, civilized, meaningful environment.”*

---

ALBERT HADLEY



# Tandus Centiva

TANDUS-CENTIVA.COM 800.248.2878  
Powerbond® Modular Broadloom Woven LVT



 **Tarkett**

THE ULTIMATE  
FLOORING EXPERIENCE