

New
Product
Focus

316 iD Revolution

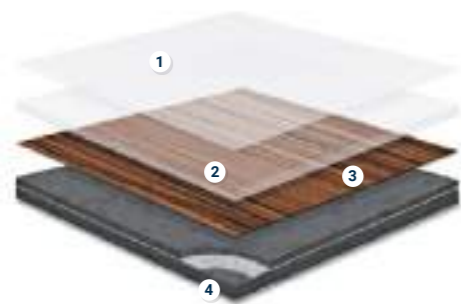
320 Cementi Click

324 iQ surface





iD Revolution is a major innovation in modular resilient flooring.



iD REVOLUTION

- 1 **TopClean XP™ PUR reinforcement** for excellent resistance to abrasion, scuffs and scratches plus easy, low-cost maintenance
- 2 **0.55mm pure PLA transparent wear layer** for an exceptionally hard-wearing and indentation-resistant surface
- 3 **12 designs in high-definition print** for a higher-quality, more natural look
- 4 **Unique structure strengthened with non-woven glass fibre** for class-leading dimensional stability with superior performance against indentation and tearing

SENSORIAL BENEFITS

- Eco-design products

FUNCTIONAL BENEFITS

- Ultra-low levels of volatile organic compounds (VOCs) emissions
- 10 years commercial warranty

ENVIRONMENTAL BENEFITS

- Can be recaptured at end-of-life through Tarkett's ReStart take-back programme, to be transformed into raw materials.
- Using recycled and natural materials,
- First Cradle to Cradle Gold certified modular resilient flooring
- Highly respectful of the environment and comprised of 83% recycled, mineral and natural materials and is 100% recyclable.
- Unique structure made of recycled PVB and chalk

TECHNICAL DATA

	Standards	iD Revolution
Type of floor covering	EN ISO 19322	Resilient floor covering based upon synthetic thermoplastic polymers
Classification	EN ISO 10874	Domestic: 23 Commercial: 33 Industrial: 42
Technical characteristics		
Total thickness	EN ISO 24346	2.5 mm
Wear layer thickness	EN ISO 24340	0.55 mm
Total weight	EN ISO 23997	3900 g/m ²
Form of delivery	EN ISO 24342	Planks 12,5 x 122 cm, 24 planks/box = 3.66 m ² 20 x 122 cm, 15 planks/box = 3.66 m ² 25 x 122 cm, 12 planks/box = 3.66 m ² Tiles 25 x 50 cm, 30 tiles/box = 3.75 m ² 50 x 50 cm, 15 tiles/box = 3.75 m ² 50 x 100 cm, 7 tiles/box = 3.5 m ²
Surface treatment (PUR)		Yes - TopClean XP™
Beveled edges		Yes
Technical performances		
Dimensional stability	ISO 19322 - PROCEDURE A	≤ 0.15%
Curl resultant to heat	ISO 19322 - PROCEDURE A	≤ 1 mm
Reaction to fire	EN 13501-1	Cfl-s1
Residual indentation	EN ISO 24343-1	≤ 0.1 mm
Furniture leg	ISO 16581 - EN 424	No damage
Castor chair	ISO 4918 - EN 425	No damage
Impact sound reduction	EN ISO 717-2	ΔLw = 2 dB
Reduction of in-room impact noise	NF S31-074	Class C (L _{n,ew} < 85 dB)
Thermal resistance	EN ISO 10456	w0.02 m ² K/W
Light fastness	EN ISO 105-B02 (method 3a)	≥ 6
Chemical resistance	EN ISO 26987	Very Good
Slip resistance	DIN 51130 EN 13893	R9/R10 depending on embossing μ ≥ 0,30
Electrical properties	EN 1815 EN 1081	< 2kV on concrete > 10 ⁹ Ω
Peeling resistance	EN ISO 24345	≥ 50N / 50mm
CE Marking		
Declaration of Performance		0007-0049-DoP-2018-06

Surface Treatment	Logistics Information	Guarantee	Sustainability credentials	Product Certification
	<p>Available in planks</p> <p>12,5 x 122cm 20 x 122cm 25 x 122cm</p> <p>Available in tiles</p> <p>33 36 100</p>			



- Non-PVC product
- Made with recycled and bio-based materials
- Extra-resistant surface
- 10 years warranty
- 100% phthalate-free and recyclable

ID REVOLUTION

Contemporary Oak - Dune
Composite - Lunar Grey



Page 474
Coordinated accessories offer

English Oak



Charcoal

24756 000

24759 000

24762 000



Linen

24756 001

24759 001

24762 001



Almond

24756 002

24759 002

24762 002



Espresso

24756 005

24759 005

24762 005



Cotton

24756 006

24759 006

24762 006

Pallet Pine

Rustic Oak



Blonde

24756 003

24759 003

24762 003



Basalt

24756 004

24759 004

24762 004

Contemporary Oak



Ivory

24756 007

24759 007

24762 007



Dune

24756 008

24759 008

24762 008

Composite



Stone Grey

24765 009

24768 009

24771 009



Lunar Grey

24765 010

24768 010

24771 010



Anthracite

24765 011

24768 011

24771 011

Logistics Information

Available in planks



Available in tiles





Cementi Click initiates a new generation of material for architectural spaces, thanks to the click system that is used for the first time with mineral tiles.

SENSORIAL BENEFITS

- Authentic look and feel of mineral floor
- Exclusive design offer dedicated to hospitality areas and made by Tarkett designers
- No visible design repetition
- Extra-matte finish
- High comfort with integrated acoustic backing

FUNCTIONAL BENEFITS

- Innovative fiber cement technology for long lasting performances
- Fast renovation directly on top of ceramic tiles & Click system quick installation
- UV top coating technology for high resistance to traffic, scratch and abrasion
- Adapted for large surface
- Absolutely stable, no reaction to temperature & humidity level variation
- No expansion gap needed

ENVIRONMENTAL BENEFITS

- Made of 95% mineral elements which are abundant natural resources to preserve natural capital
- Good indoor air quality > TVOC emissions $\leq 10 \mu\text{g}/\text{m}^3$
- Blue angel certified
- ReStart program : After the product has been used, it can be collected and sent back to the manufacturing site to be re-engineered directly as a new product



CEMENTI CLICK

- Multi-layer UV coating protection (100 microns)**
Micro & Macro scratch
Class 33 resistance to impact and abrasion
- Digital printing** directly on top of the raw material
Innovative digital technology
Exclusive collection made by Tarkett
- Mineral board**
Product stability and rigidity
Resistant to water and temperature variation
Outstanding fire resistance
No indentation
- Integrated acoustic backing**
Bringing 19dB of impact sound reduction

TECHNICAL OVERVIEW

	Standards	Cementi Click
Classification		
Type of floor covering	EN 16511	Loose-laid panels-Semi-rigid multilayer modular floor (MMF) covering panels with wear resistant top layer
Classification	EN 16511	Commercial: 33
Characteristics		
Total thickness	ISO 24337	7.5mm
Total weight	EN ISO 23997	12 000g/m ²
Dimensions	ISO 24337	Planks: 1235 x 200mm, 6 planks/box = 1.482m ² (44 boxes) Tiles: 920 x 460mm, 4 tiles/box = 1.693m ² (40 boxes)
Surface treatment (PUR)		Yes
Beveled edges		Yes -Micro Bevel
Technical performance		
Dimensional stability	EN ISO 23999	$\leq 0.10\%$
Reaction to fire	EN 13501-1	B _s -s1 loose laid on concrete and on wood
Residual indentation	EN ISO 24343-1	$\leq 0.2 \text{ mm}$
Furniture leg	EN 424	No damage
Castor chair	ISO 4918 - EN 425	No damage
Impact sound reduction	EN ISO 717-2	19 dB
Light fastness	EN ISO 105-B02	≥ 6
Resistance to staining	EN 438-2	Groups 1 & 2: grade 5 Group 3: grade 4
Wear resistance	EN 13329	AC5 (≥ 6000 cycles)
Impact resistance	EN 13329	IC3 ($\geq 1600 \text{ mm}$)
Micro-scratch resistance	EN 16094	MSR-A2
Swelling	ISO 24336	$\leq 18\%$
Slip resistance	DIN 51130 EN 13893	R10 $\mu \geq 0,30$
Antistatic performance	EN 1815	< 2kV > 10 ⁹ Ohm
Thermal resistance	EN 12667	$\leq 0,05\text{m}^2 \text{ K/W}$
Underfloor heating	-	Suitable
CE Marking		
DoP number	EN 14041	0132-0069-DoP-2017-11

* Platinum TIAQ.

Surface Treatment	Logistics Information	Guarantee	Sustainability credentials	International Certification
	<p>Available in planks</p> <p>20 x 123,5cm</p> <p>Available in tiles</p> <p>920</p>			



- Extremely rigid, stable and resistant core structure
- Exclusive design offer combined with high matte finish
- Its foam backing layer helps diminish sound transmission

CEMENTI CLICK

Concrete - Cool Light
Deltas - Contrast

Logistics Information

Available in planks



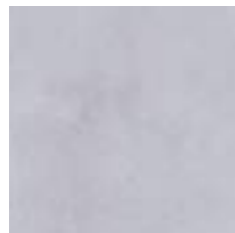
20 x 123,5cm

Available in tiles



Belgian Stone - Clay

Concrete



Cool Light

24778 004



Cool Dark

24778 005



Warm Light

24778 006



Warm Medium

24778 007

Tangents



Contrast

24778 013



Colour

24778 014

Facets



Tonal

24778 011



Colour

24778 012

Deltas



Tonal

24778 016



Contrast

24778 017

Tribeca



Colour

24778 009



Grey

24778 010

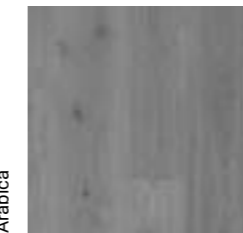
Garden Oak



Arabica

35989 018

Park Oak



Mercury

35989 019



Brass

35989 020



Cassia

35989 021



Clove

35989 022

Belgian Stone



Ashen

24778 001



Clay

24778 002

Marble



Grey Marble

24778 000



Concrete Marble

24778 003

Echos



Echos

24778 015

Shadow Lines



Shadow Lines

24778 008





A collection unlocking creativity in design and architecture



SENSORIAL BENEFITS

- A collection unlocking creativity in design and architecture.
- Surface coordination to enhance architecture design

FUNCTIONAL BENEFITS

- Keep iQ Surface looking new with our unique dry-buffing restoration technology.
- Experience unparalleled resistance to stains and chemicals via our next-generation surface treatment.
- iQ Surface and Surface Wall are fully flexible for a perfect covering and a watertight finish from floor to wall without additional waterproof membranes.

ENVIRONMENTAL BENEFITS

- Benefit from our phthalate-free, 100% recyclable flooring, with extremely low VOC emissions – 100 times below the most stringent European regulations.

TECHNICAL OVERVIEW

	Standards	iQ Surface	Surface Wall
Classification			
Type of floor covering	ISO 10581	Homogeneous single layered vinyl flooring	-
Binder Content	ISO 10581	Type I	-
Type of wall covering	EN 259-1	-	Homogeneous vinyl wall covering
CE certification	EN 14041	Yes	-
	EN 15102	-	Yes
Classification	ISO 10874	Commercial: 34 Industrial: 43	-
Characteristics			
Surface treatment (PUR)		New iQ PUR	PU-Shield
Total thickness	ISO 24346	2.0 mm	
Wear layer thickness	ISO 24340	2.0 mm	
Total weight	ISO 23997	2 800g/m ²	3 400g/m ²
Form of delivery	ISO 24341 – EN 426 Sheet (rolls)	Approx. 23 running metres x 200cm Art. no. 21089_... 3 digit colour colour number	Approx. 23 running metres x 200 cm Art. no. 21090_... 3 digit colour colour number
	ISO 24342 – EN 427 Tiles (box)	61.0 x 61.0 cm – 14 tiles/box = 5.21 m ² Art. no. 21091_... 3 digit colour colour number	-
Technical performance			
Reaction to fire	EN 13501-1 EN ISO 9239-1 EN ISO 11925-2	Class B _{s1} ≥ 8 kW/m ² Pass	-
	EN 13501-1 AS/NZS 3837	-	Class B-s2,d0 Class B
TVOC emissions after 28 days	ISO 16000-6	≤ 10µg/m ³	
Airborne particle emissions	ISO 14644-1	ISO class 4	
Chemical resistance	ISO 26987	Excellent	
Slip resistance	DIN 51130 EN 13893 BS 7976-2	R9 µ ≥ 0,30 Low risk of slip	-
Wet room approval	EN 13553 Annex A Wetroom test GBR Class VT	Watertight	Approved
Residual indentation	ISO 24343-1	Required value: ≤ 0.10mm Best measured value: 0.02mm	-
Dimensional stability	ISO 23999	≤ 0.40% for rolls ≤ 0.25% for tiles	≤ 0.40%
Castor chair	ISO 4918	Suitable	-
Flexibility	ISO 24344	Pass	-
Static electrical discharge	EN 1815	< 2kV	-
Underfloor heating		Suitable – max 27°C	-
Thermal resistance	EN 12667	Approx. 0.01m ² K/W	-
Light fastness	EN ISO 105-B02	≥ level 7	
Bacteria resistance	ISO 846:Part C	Does not favour growth	
Seam strength	EN 684	Average value: ≥ 400 N/50mm	
Colours		20	7
CE Marking			
DoP number		0019-0009-DoP-2013-07	0019-0025-DoP-2013-07

	Surface Treatment	Logistics Information	Laying direction	Sustainability credentials
iQ Surface	NEW FOR LIFE™	Available in rolls Rolls length: 231m Available in tiles		TVOC AT 28 DAYS PHTHALATE FREE 100% 25.5% Recyclable Restart Ready
Surface Wall		Available in rolls Rolls length: 231m		TVOC AT 28 DAYS PHTHALATE FREE 100% 25.5% Recyclable Restart Ready





iQ SURFACE

Rouge - Multi/ Accent

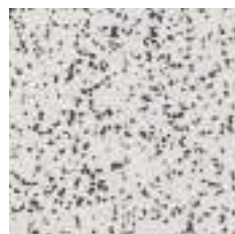
Page 474
Coordinated
accessories
offer



Vivid - Airy

FLOORS

Contrast



Airy

21089 083
21091 083



Multi

21089 084
21091 084



Accent

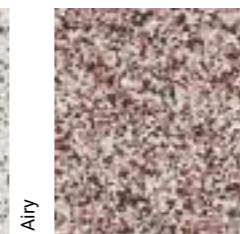
21089 162
21091 162

Rouge



Airy

21089 074
21091 074



Multi

21089 080
21091 080

Vivid



Accent

21089 163
21091 163



Airy

21089 089
21091 089



Multi

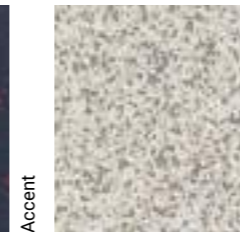
21089 090
21091 090

Dimmed



Accent

21089 181
21091 181



Airy

21089 085
21091 085

Sober



Multi

21089 086
21091 086



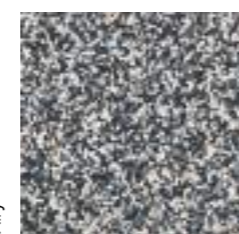
Accent

21089 164
21091 164



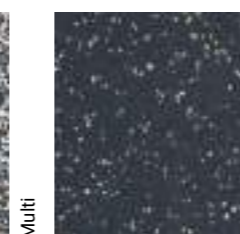
Multi

21089 087
21091 087



Multi

21089 088
21091 088



Accent

21089 165
21091 165

Solid



Ash

21089 091
21091 091



Dark Ash

21089 094
21091 094



Seashell

21089 092
21091 092



Peach

21089 093
21091 093



Powder

21089 095
21091 095

WALLS

Contrast



Upper

21090 815

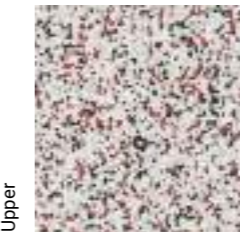
Rouge



Upper

21090 387

Vivid



Upper

21090 389

Dimmed



Upper

21090 388

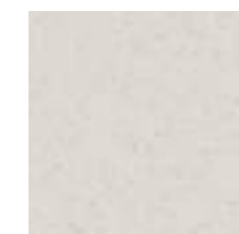
Sober



Upper

21090 386

Solid



Upper Seashell

21090 813



Upper Ash

21090 812

Logistics Information

Available in rolls
Rolls length: 25m

Available in tiles

